

Render Selector Guide



About us



SPS Envirowall is a major supplier of Render-Only and EWI solutions to the construction industry. Suitable for both low rise and high rise buildings our extensive range of innovative render systems are perfect for a decorative uplift to old buildings, or new build applications.

Our products have been rigorously tested by the BBA, CERAM and the BRE have been used throughout the UK and continental Europe for over 30 years. Our partnership approach is to assist you from the specification process right through to contractor selection, product application and completion of the works.

We'll make sure that the products not only suit their purpose but also provide the best possible value for your project. We can also assist with the selection of experienced and approved contractors, monitoring their work and ensuring that the application of our products are undertaken to the highest standard.

Contractor, specifier or architect, you can expect exceptional service and the best technical support throughout your project.



Substrate Primers

The purpose of the **SPS Envirowall** primer is two-fold. First, it enhances adhesion. The primer creates a bonding surface on the substrate, whether it's concrete, masonry, or another material.

Second, it promotes uniform absorption. The primer helps regulate the porosity of the substrate, ensuring that the subsequent finish is applied consistently.

SBR Primer Moisture Control



25kg



40 per pallet



Application Tool	Brush, Roller or Spray
Dilution Rate	1 hour +
Coverage	5.5 ltr to 5.7 ltr per 25kg
Application Temperature	+3°C to +25°C
Humidity Requirement	Less than 85%

SBR Primer Moisture Control, your go-to solution for a moisture-resistant foundation. Crafted with precision, this primer not only ensures a flawless application but also acts as a barrier against unwanted dampness. A seamless makeup routine with the added benefit of long-lasting moisture control. Embrace the confidence of a makeup look that lasts all day, effortlessly.

Render Prime & Grip High polymer primer



20 litre



30 per pallet



Application Tool	Brush, Roller or Spray
Dilution Rate	Up to 10%
Coverage	Approx 40-60m2 per 20kg
Application Temperature	+5°C to +25°C for minimum 24 hrs
Humidity Requirement	Less than 85%

Render Grip & Prime is a polymer resin based primer, specifically designed for use on high suction substrates. This primer is engineered with fine particle polymers, ensuring deep penetration into the substrate and creating ultra-high adhesion. The sandy texture creates a good key for subsequent topcoats, and the colouring makes for good visibility on primed areas, making application easier.

Substrate Primers



Waterproofing Bonding Coat

Waterproofing Bonding Coat (Cementitious)



20kg



30 per pallet



Application Tool	Trowel or Brush
Dilution Rate	1 hour +
Coverage	Approx 2.4 to 3.6kg per m ²
Application Temperature	+5°C to +25°C
Humidity Requirement	Less than 95%

SPSEnvirowall Waterproofing Bonding coat is a technologically advanced 2-part styrene acrylic copolymer and cement-based primer system. Specifically designed for use on masonry and concrete substrates to provide a highly waterproof barrier and flexible, key prior to the application of a cement base coat, in preparation for subsequent decorative SPSEnvirowall render finish. Apply to areas that are susceptible to dampness and efflorescence. SPSEnvirowall Waterproofing Bonding coat is particularly effective in areas that may have the risk of water ingress from behind the render, for example retaining walls.

High Adhesion Bonding Primer

Substrate primer



25 litre



32 per pallet



Application Tool	Brush, Roller or Spray
Dilution Rate	Apply neat
Coverage	Approx 3.2 to 5m ² per litre
Application Temperature	+5°C to +25°C
Humidity Requirement	Less than 85%

SPSEnvirowall Bonding Primer is a silicone resin-based primer, specifically designed for use on masonry substrates. The fine particle size polymers within the product ensure deep penetration into the substrate, creating ultra-high adhesion, whilst the silicone resin ensures that the primer matches the breathability of its subsequent topcoats.

Basecoats

SPS Envirowall range of basecoats are crucial as they provide a smooth and even surface for the application of the final finish.

Once cured, the reinforced basecoat provides a smooth, consistent, level substrate for the application of the chosen SPS Envirowall finish.

EnviroRend Insulation Basecoat



25kg



40 per pallet



Application Tools	Stainless steel trowel, 6mm notched trowel, sponge flat
Working Time	1 hour +
Water Demand	5.5 ltr to 5.7 ltr per 25kg
Open Time	2-8 hours
Humidity Requirement	Less than 95%
Coverage	
Application Temperature	+3°C to +25°C

Envirorend basecoat is a reinforcing and levelling basecoat coat used in combination with reinforcement mesh. Applied directly onto the face of the insulation when using Mineral Wool or RendaFlex boards as a part of SPSenvirowall External Wall Insulation and RendaFlex render carrier board systems.

EnviroBase Basecoat



25kg



40 per pallet



Application Tools	Stainless steel trowel, 6mm notched trowel, sponge flat
Working Time	1 hour +
Water Demand	4.75 ltr to 5.5 ltr per 25kg
Open Time	2-8 hours
Humidity Requirement	Less than 95%
Coverage	
Application Temperature	+3°C to +25°C

Envirobase Basecoat is a pre-mixed ready-to-use material requiring only the addition of clean water. A cement based ultra-high performance base coat which contains blended high performance polymer technology for excellent adhesion, strength and hydrophobic properties. Chemical additives in the product also control rehydration and workability.

Basecoats



RetroBase High Polymer Insulation Basecoat



25kg



40 per pallet



Application Tools	Stainless steel trowel, 6mm notched trowel, sponge flat
Working Time	1 hour +
Water Demand	5.5 ltr to 5.7 ltr per 25kg
Open Time	2-8 hours
Humidity Requirement	Less than 95%
Coverage	
Application Temperature	+3°C to +25°C

Retrobase basecoat is a polymer modified reinforcing and levelling basecoat coat used in combination with reinforcement mesh. Vapour permeable, weather resistant and offers excellent adhesion. Can also be applied direct to prepared masonry and blockwork substrates as part of a render-only system. Suitable for hand & spray application.

RapidMix Basecoat



25kg



40 per pallet



Application Tools	Stainless steel trowel, 6mm notched trowel, sponge flat
Working Time	1 hour +
Water Demand	5.5 ltr to 5.7 ltr per 25kg
Open Time	4-5 hours
Humidity Requirement	Less than 95%
Coverage	
Application Temperature	+3°C to +25°C

Perfect for DIY enthusiasts and professionals alike. It's quick-drying formula provides a smooth canvas for your artistic endeavors. Say goodbye to waiting around – Rapidmix Basecoat ensures you spend more time creating and less time waiting. Elevate your projects effortlessly.

Finish Primers

The purpose of the **SPS Envirowall** primer is two-fold. First, it enhances adhesion. The primer creates a bonding surface on the substrate, whether it's concrete, masonry, or another material.

Second, it promotes uniform absorption. The primer helps regulate the porosity of the substrate, ensuring that the subsequent finish is applied consistently.

EnviroCryl Acrylic Primer



25kg



30 per pallet



Application Tool	Brush, Roller or Spray
Dilution Rate	2% Maximum
Coverage	
Application Temperature	+5°C to +25°C
Humidity Requirement	Less than 85%

EnviroCryl (Granol' plus STG) Acrylic Primer is water vapour permeant, non-swelling, low stress, non-film forming and environmentally friendly. Used as a primer over basecoat in conjunction with our EnviroCryl Acrylic topcoat. Extensive choice of colours available corresponding with our wide range of EnviroCryl Acrylic topcoats.

FlexiSil Primer



25kg



30 per pallet



Application Tool	Brush, Roller or Spray
Dilution Rate	Up to a Maximum of 10% depending on the substrate
Coverage	90-105m ² per KG
Application Temperature	+5°C to +25°C
Humidity Requirement	Less than 85%

FlexiSil Primer is vapour-permeable, highly adhesive, polymer-modified and highly weather resistant. Used as a primer over basecoat in conjunction with our FlexiSil topcoat. Extensive choice of colours available corresponding with our wide range of SPS Envirowall topcoats.

Finish Primers



EnviroSil Silicone Primer



25kg



30 per pallet



Application Tool	Brush, Roller or Spray
Dilution Rate	2% Maximum
Coverage	
Application Temperature	+5°C to +25°C
Humidity Requirement	Less than 85%

EnviroSil (Granosil' plus STF) Silicone Primer is water vapour permeant, non-swelling, low stress, non-film forming and environmentally friendly. Used as a primer over basecoat in conjunction with our EnviroSil Silicone topcoat. Extensive choice of colours available corresponding with our wide range of EnviroSil Silicone topcoats.



Topcoat

SPS Envirowall silicone thin coat render acts as the outermost layer in the render-only or EWI system, serving as a shield against the elements. Its waterproof and breathable properties help to prevent water ingress while allowing moisture vapor to escape, thus contributing to the overall durability and health of the building structure. The silicone content in the render adds flexibility, making it resistant to cracking and ensuring a longer-lasting, aesthetically pleasing appearance.

Beyond its functional benefits, the render also offers a wide range of color options, enhancing the visual appeal of the building. This not only protects the structure but also adds a touch of style to the exterior. In the UK, where weather conditions can be challenging, having a reliable and weather-resistant silicone thin coat render becomes even more crucial for maintaining the integrity of the building over time. Topcoats are available in a range of grain sizes from 1.5mm to 3mm.

FlexiSil Silicone Top Coat



25kg



30 per pallet



Finishing Tool	Plastic trowel or spray
Substrate Primer	FlexiSil Primer
Water Down	2% Maximum
Ready to Finish	Immediately
Humidity Requirement	Less than 85%
Coverage	8-10m ² per 25kg tub
Application Temperature	+5°C to +25°C

FlexiSil's acrylic base with silicone enhanced additives gives it the flexibility and extensive colour choice of acrylic with the water repellency and enhanced cleansing properties of silicone. FlexiSil offers an all-round solution, suitable for a wide range of applications.

Granosil KR Silicone Top Coat



25kg



24 per pallet



Finishing Tool	Plastic Float
Substrate Primer	Envirosil Primer
Water Down	2% Maximum
Ready to Finish	Immediately
Humidity Requirement	Less than 85%
Coverage	8-10m ² per 25kg tub
Application Temperature	+5°C to +25°C

Granite-inspired elegance meets durable performance with Granosil KR. Transform your space with a textured finish that not only captivates visually but also withstands the test of time. Perfect for both residential and commercial projects, this render brings a touch of sophistication to your exteriors while ensuring lasting quality.

Topcoat



Enviromin Low Temperature Application Top Coat



25kg



40 per pallet



Finishing Tool	Plastic Float
Substrate Primer	EnviroSil Primer
Ready to Finish	Immediately
Humidity Requirement	Less than 85%
Coverage	8-10m ² per 25kg tub
Application Temperature	+5°C to +25°C

Enviromin is a high-performance, cement based and polymer modified through coloured mineral thin coat render and is based on a colour fast lime bloom free technology. On-site it requires only the addition of water to mix. Fibre reinforced, highly weather resistant and incorporating high-performance cross-linked technology – this water-repellent formulation provides excellent façade protection with a high level of vapour permeability. It can also be applied in lower temperatures from 0 °C up to 25 °C.

Scratch Render

Granicem L Scratch Render



25kg



40 per pallet



Finishing Tool	Sponge, scrape or spray
Substrate Primer	Envirosil Primer
Water Down	2% Maximum
Ready to Finish	Immediately
Humidity Requirement	Less than 85%
Coverage	8-10m ² per 25kg tub
Application Temperature	+5°C to +25°C

Granicem L can be applied manually or sprayed mechanically on all substrates where traditional hydraulic coatings can be used such as :

- Brickwork or lightweight blockwork
- Concrete
- Mineral substrates
- Cementitious basecoat renders

Granicem L coatings can be used for renovation or on new buildings and can be applied directly to the substrate, using the monocouche technique.

Receivers

The dash receiver provides two main benefits. Firstly, a robust, coloured, textured render that provides a weathering layer to the external skin of the system. Secondly, it provides a medium into which a stone aggregate is cast and trapped, providing a stone faced, decorative finish to the property.

EnviroDash Receiver



25kg



40 per pallet



Finishing Tool	Dash Baton
Pot Life	1 hr
Water Demand	4.75 to 5L per 25kg bag
Ready to Finish	5 mins to 40 mins
Humidity Requirement	Less than 95%
Coverage	1.5kg per mm per m2
Application Temperature	+3°C to +5°C

EnviroDash is a high polymer modified through colour dashing receiver which is available in an extensive range of colours which work in conjunction with an appropriate range of dashing aggregates. This two-part system, receiver and aggregate has been used for decades within the SPS Envirowall system range and offers a highly attractive, durable and strong solution for this type of finish.

RapidMix Receiver Multifinish



25kg



40 per pallet



Finishing Tool	Dash Baton
Pot Life	1 hr
Water Demand	4.75 to 5L per 25kg bag
Ready to Finish	5 mins to 40 mins
Humidity Requirement	Less than 95%
Coverage	1.5kg per mm per m2
Application Temperature	+3°C to +5°C

It's versatility in handling various finishes makes it a must-have for any DIY enthusiast or professional. From smooth surfaces to textured finishes, this receiver delivers perfection with ease. Simplify your projects and elevate your façade finish with RapidMix—it's the ultimate tool for a flawless finish every time.

Accessories



Our reinforcement mesh is the unsung hero of the render-only or EWI system. The mesh provides reinforcement and stability to the render, thus creating a perfect base for the subsequent application of an **SPS Envirowall** finish product.

Mesh



25kg

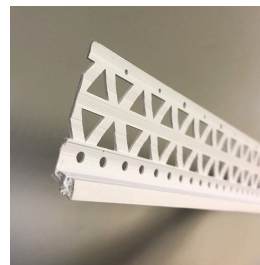


30 per pallet



Supplied in 50m² rolls (50m long x 1m wide) Benx glass fibre reinforcement mesh is used to add extra strength and impact resistance to basecoats, both in a render only context and when applied as part of an external wall insulation system. The reinforcement mesh should be applied as near to the outer surface of the basecoat as possible to provide the most effective protection.

Beads



Surface mounted angle beads provide a clean straight edge and additional strength at external angles.

Available in a range of sizes and colours, used mainly with traditional thick coat applications on both insulated render and render only systems made from powder coated Galvanised Steel, Aluminium or Stainless Steel with optional PVC nosing available on certain profiles, which will provide additional protection against abrasion and corrosion.



RenderFlex Render Board



57kg

Board size: 2400mm x 1200mm
Pallet sizes for Renderflex
12mm: 45 & 26 boards on a pallet



Our high performance dimensionally stable render carrier board.

RCM Renderflex is a high-performance cellulose fibre cement building board. Offering excellent strength, weathering and stability properties making it an ideal carrier board for thin-coat Render-Only systems. Renderflex has been specially formulated to achieve a strong key between polymer basecoats and top coats.

The unique board structure offers a high tensile strength (ILB) essential for long term durability, whilst being developed to minimise board movement reducing any stress being applied to the render system.

KEY FEATURES

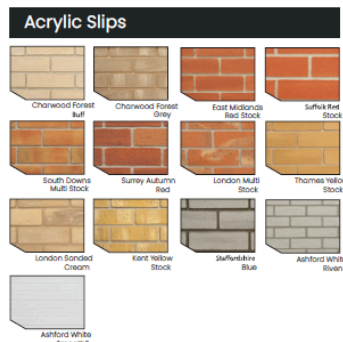
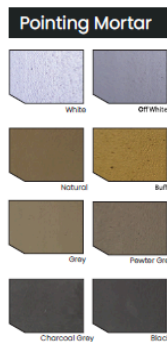
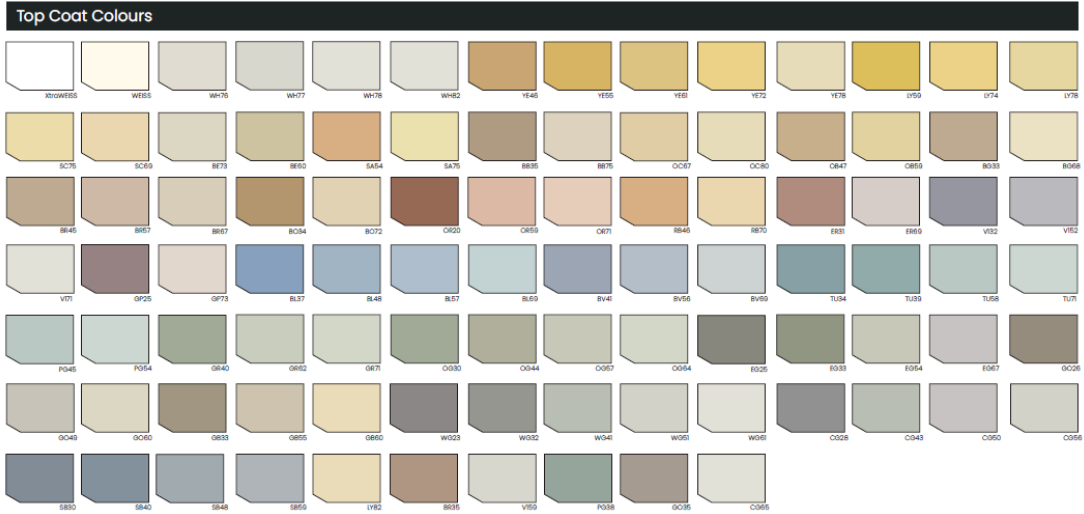
- Fire rated to EN 13501-1 class A2-s1, d0
- BBA approved
- High dimensional stability
- Excellent weathering properties prior to render application
- High impact resistance
- Maintains minimum board movement
- Reduced stress on rendered finish



Colours

Almost unlimited design options

This is just a small selection of the wide range available:



Colour Accuracy

Colour swatches have been reproduced as accurately as possible, however there may be some variations due to technical, colour reproduction and render manufacture reasons. If you require an accurate swatch, please ensure you ask us for a sample of the product and colour chosen prior to commencing any works.

Our Branches



Wishaw Trade Counter
Block 1, Canyon Road, Excelsior Park
Wishaw ML2 0EG
T: 01698 532 873
E: scotland@spsenvirowall.co.uk



Newcastle Under Lyme Trade Counter
Unit 45 Brookhouse Road, Parkhouse
Ind Est West, Newcastle under Lyme
Staffordshire ST5 7RU
T: 01782 567 079
E: newcastle@spsenvirowall.co.uk



Cardiff Trade Counter
Unit 6, Fairfield Ind Est, Gwaelod Y Garth
Cardiff CF15 8LA
T: 01443 888 390
E: cardiff@spsenvirowall.co.uk



Basildon Trade Centre
Unit 9 Repton Close,
Burnt Mills Industrial Estate
Basildon, Essex SS13 1LJ
T: 01268 293 532
E: basildon@spsenvirowall.co.uk

Lonsdale Chambers, Lonsdale Street
Stoke-on-Trent, Staffordshire ST4 4BT
T: **01535 661633**
E: info@spsenvirowall.co.uk
spsenvirowall.co.uk

