

## Specification Substantiation Sheet

System: Cavity System 2 EWI System

### SPS Envirowall System : -

External Thermal Insulated Composite System (ETICS) using Mineral Wool Insulation & Brick slip Finish applied onto a non-combustible fillet and Render System carrier board.

The test Covers the following System Accreditation

**Fire Classification report number:** EFR-20-004114 A

**Reaction to Fire Classification - A2-s1-d0**

Test Standard: BS 13501-1:2018

Date of test : 10/05/2022

Validity Period: Valid until change of regulatory standards or fundamental materials formulation or system change.

Test Authority – Efectis France

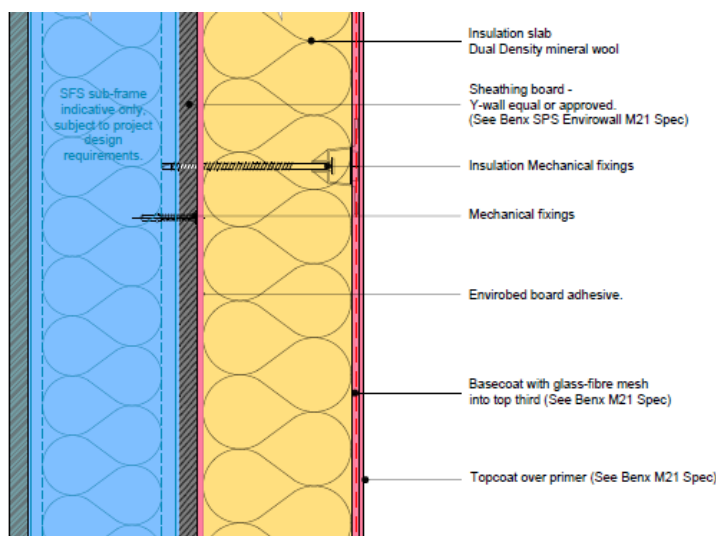
Notified body number: 1812

Test Site Location – Efectis France

COFFRAC No.1-1762 & 1-2470

- BS EN 13501 classification report is the summary of the tests stated below:-
- BS EN ISO 1182 - non-combustibility test.
- BS EN ISO 1716 - Heat of combustion test.
- BS EN 13823 Single - Burning item test.

### Section Through System



### Summary of System Tested

Nom du laboratoire <i>Name of Laboratory</i>	Nom du commanditaire <i>Name of sponsor</i>	N° de référence du rapport <i>Report ref. no</i>	Méthode d'essai et date/règles du domaine d'application et date <i>Test method and date field of application rules and date</i>
EFFECTIS FRANCE	SPS ENVIROWALL	EFR-19-SBI-001587A	NF EN 13823+A1 : 2015
EFFECTIS FRANCE	SPS ENVIROWALL	EFR-19-SBI-002808C review 1	NF EN 13823+A1 : 2015
EFFECTIS FRANCE	SPS ENVIROWALL	EFR-20-SBI-004114	NF EN 13823+A1 : 2015
EFFECTIS FRANCE	SPS ENVIROWALL	EFR-19-HC-002305A	NF EN ISO 1716 : 2018
EFFECTIS FRANCE	SPS ENVIROWALL	EFR-19-HC-002305D	NF EN ISO 1716 : 2018
EFFECTIS FRANCE	SPS ENVIROWALL	EFR-19-HC-002305E	NF EN ISO 1716 : 2018
EFFECTIS FRANCE	SPS ENVIROWALL	EFR-19-HC-002305F	NF EN ISO 1716 : 2018
EFFECTIS FRANCE	SPS ENVIROWALL	EFR-20-HC-000496A	NF EN ISO 1716 : 2018
EFFECTIS FRANCE	SPS ENVIROWALL	EFR-20-HC-000496B	NF EN ISO 1716 : 2018

Description	Product	Thickness (mm)	Mass Unit (kg/m <sup>2</sup> )	Per Area	Layer Classification
MW Insulation	Rockwool Stone Wool	160	12.1		Substantial
Base Coat	EnviroRend	5	8		Substantial
1st mesh cloth	Premier mesh	0.52	0.16		Non-Substantial
Adhesive	Brick Slip adhesive	2	4.7		Substantial
Brickslip	Brickslip	4	6.8		Substantial

### Tested Specimen

- Valid for all colours

### Technical Notes – Field of Application

- Valid with air gap / cavity between the panel and the substrate
- According to the standard BS EN 13238:2012, the classification is valid for the following end use applications:
- Valid bonded, bonded and mechanically fixed or only mechanically fixed to any end use wood-based substrates with a density at least 510 kg/m<sup>3</sup> and, also any end use substrate of classes A1 and A2-s1,d0.
- Valid for mineral wool with a density  $\leq 140\text{kg/m}^3$

## General Specification & Clarification Notes

The above system samples have been tested, designed, and constructed in accordance with EAD 040083 00 0404 (which supersedes ETAG 004)

Single Burn item test (SBI - EN 13823) configuration does not require any beads, fixings, trims, movement beads, etc to be tested as part of the physical tested sample for EW (ETICS) systems as stated. This is in accordance with European Assessment Directive (EAD 040083 00 0404)

The above items are considered by the standard to be non-substantial and or non-continuous items within the system and therefore not needed to be tested to ISO 1182:2020 for Reaction to fire tests for products non-combustibility tests.

In addition, within the EAD & in-line with BS EN 13823 (SBI test), when the use of plastic / nylon mechanical fixing has been included within the tested system, metal mechanical fixings are also valid for use. Mechanical Fixings used in the test are in line with Benx SPS Envirowall KIWA or BBA Certificate and manufactured and designed in accordance with ETAG 004.

Suitable approved sheathing boards, including Y wall and Multipurpose may be able to achieve a timed fire rating of up to 120 minutes, subject structure build up outside of this classification report (BS EN 1364-1: 1999). Refer to Benx Technical Services for further support.



EFR-20-004114 A

RAPPORT DE CLASSEMENT  
CLASSIFICATION REPORT

### 4. CLASSEMENT ET DOMAINE D'APPLICATION / CLASSIFICATION AND FIELD OF APPLICATION

#### 4.1. REFERENCE DE CLASSEMENT / REFERENCE OF CLASSIFICATION

Le présent classement a été effectué conformément à l'EN 13501-1:2018.  
This classification has been carried out in accordance with EN 13501-1:2018.

#### 4.2. CLASSEMENT / CLASSIFICATION

Le produit, système d'isolation thermique extérieure référencé Enviro Speedy Slip Brick, a été classé en fonction de son comportement au feu :

The product, External Thermal Insulation Composite System referenced Enviro Speedy Slip Brick, in relation to its reaction to fire behaviour is classified:

A2

Le classement supplémentaire en relation avec la production de fumée est :  
The additional classification in relation to smoke production is:

s1,

Le classement supplémentaire en relation avec les gouttelettes/particules enflammées est :  
The additional classification in relation to flaming droplets / particles is:

d0,

Le format du classement de réaction au feu pour les produits de construction, à l'exception des revêtements de sol et des produits d'isolation thermique pour conduites linéaires est :

The format of the reaction to fire classification for construction products excluding floorings and linear pipe thermal insulation products is:

Comportement au feu Fire behaviour	Production de fumée Smoke production	Gouttelettes enflammées Flaming droplets
A2	- s 1	, d 0

c'est-à-dire, A2-s1, d0  
i.e. A2-s1, d0

Classement de réaction au feu Reaction to fire classification	A2-s1, d0
--	-----------

### Standard & Reference Documents

- The above System classification should be read and designed in relation to BRE BR135 & BS 8414-1:2020 & 8414-2:2020 steel frame.
- BS 8414-1:2020 (Fire performance of external cladding systems - Test method for non-loadbearing external cladding systems fixed to, and supported by, a masonry substrate)
- BS 8414-2:2020 Fire performance of external cladding systems - Test method for non-loadbearing external cladding systems fixed to, and supported by, a structural steel frame.
- BRE BR 135 - Fire performance of external thermal insulation for walls of multi-storey buildings
- EAD 040083 00 0404 - External Thermal Insulation Composite Systems (ETICS) with Renderings
- EAD 040287-00-0404 - ETICS with Discontinuous claddings as external skin
- BS EN 13501-1:2018 Fire classification of construction products and building elements - Classification using data from reaction to fire tests.
- ETA004 Guidance for European Technical Approval of External Thermal Insulation Composite Systems with render, including fixings and association including inbuilt components.

*ISO Ref: 5327*