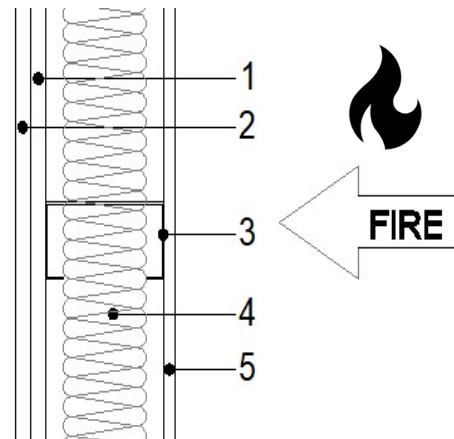


FIRE SUBSTANTIATION SHEET

ISO 5210

SYSTEM: RCM 9mm Ywall – 60-minute Non-loadbearing.

Fire Rating: 60 MINUTES
Test Reference 171615



Test Build-up

Layer

- | | |
|---------------------------------|--------------------------------------|
| (1) Facing Internal Face Layer: | 12.5mm British Gypsum Fireline. |
| (2) Facing Internal Face Layer: | 12.5mm British Gypsum Wallboard. |
| (3) Stud: | Metsec 100M12 @ 600mm Centres. |
| (4) Insulation: | Rockwool RWA45 70mm. |
| (5) Facing Outer Layer: | RCM 9mm Ywall fixed @ 300mm centres. |

TEST RESULTS:

Test Laboratory:	Warrington fire
Test Standard:	BS 476: Part 22 1987
Original Test Date:	11/04/2008
System Review:	19/06/2017
Integrity:	76 minutes.
Insulation:	76 minutes.
Non-loadbearing Result (EI):	60 minutes.

SCHEDULE OF COMPONENTS

<u>Item</u>	<u>Description</u>
1. Head Track	
Manufacturer	: Metsec Plc, Hepsec division
Reference	: 104M20
Material	: Cold rolled galvanised mild steel channel
Thickness	: 2 mm
Overall size	: 105 mm wide x 64 mm deep
Fixing method	: Through screwed
Fixings	
i. manufacturer	: Spit
ii. type	: Tapcon concrete fixing screws
iii. material	: Steel
iv. reference	: MHT 32
v. overall size	: 50 mm long x 6.4 mm diameter
vi. centres	: 600 mm
2. Base Track	
Manufacturer	: Metsec Plc, Hepsec division
Reference	: 104M12
Material	: Cold rolled galvanised mild steel channel
Thickness	: 1.3 mm
Overall size	: 103 mm wide x 60 mm deep
Fixing method	: Through screwed
Fixings	
i. manufacturer	: Spit
ii. type	: Tapcon concrete fixing screws
iii. material	: Steel
iv. reference	: MHT 32
v. overall size	: 50 mm long x 6.4 mm diameter
vi. centres	: 600 mm
3. Vertical Stud	
Manufacturer	: Metsec Plc, Hepsec division
Reference	: 100M12
Material	: Cold rolled galvanised mild steel channel
Thickness	: 1.4 mm
Overall size	: 100 mm wide x 54 mm deep with 2 off 12 mm returned edges
Fixing method	
i. fixed edge	: Through screwed
ii. between track sections	: Through screwed top and bottom



buildingboards.co.uk info@rcmltd.biz 0800 612 4662

Company VAT GB 228 9169 73
 Company Reg 05155573
 Registered in England. Registered office: Unit 25-26, Rosevale Rd, Parkhouse Ind Est West, Newcastle-under-Lyme, ST5 7EF

<u>Item</u>	<u>Description</u>
3. Vertical Stud (Continued)	
Fixings to fixed edge	
i. manufacturer	: Spit
ii. type	: Tapcon concrete fixing screws
iii. material	: Steel
iv. reference	: MHT 32
v. overall size	: 50 mm long x 6.4 mm diameter
vi. centres	: 600 mm
Fixings between track sections	
i. manufacturer	: Spit
ii. type	: Wafer head screws
iii. material	: Steel
iv. reference	: CFC 16
v. overall size	: 17.5mm long x 4.8 mm diameter
vi. quantity	: 4 off top and bottom, 2 per side
4. Cladding Boards	
Manufacturer	: RCM Roofing & Cladding Manufacturers Ltd
Reference	: RCM Y-wall board
Material	: Cement based building board
Thickness	: 9 mm
Fixing method	: Through screwed on the exposed face to track sections and vertical studs, items 1, 2 and 3
Fixings	
i. type	: Self drilling, self tapping drywall screws
ii. material	: Steel
iii. overall size	: 42 mm long x 3.5 mm diameter
iv. centres	: 200 mm around the perimeter and 300 mm in the middle of the board
5. Insulation	
Manufacturer	: Rockwool
Reference	: RWA 45
Material	: Mineral fibre based insulation
Thickness	: 70 mm
Overall size	: 1000 mm x 600 mm
Density	: 45 kg/m ³ , manufacturers stated nominal, uncompressed
Fixing method	: Fitted between studs and retained by cladding boards on both faces
6. Cladding Boards Inner	
Manufacturer	: British Gypsum
Reference	: Wall Board
Material	: Gypsum based plasterboard
Thickness	: 12.5 mm
Fixing method	: Through screwed on the unexposed face to track sections and vertical studs, items 1, 2 and 3



buildingboards.co.uk info@rcmltd.biz 0800 612 4662

Company VAT GB 228 9169 73
 Company Reg 05155573
 Registered in England. Registered office: Unit 25-26, Rosevale Rd, Parkhouse Ind Est West, Newcastle-under-Lyme, ST5 7EF

Item

Description

6. Cladding Boards (Continued)

Fixings

- i. type : Self drilling, self tapping drywall screws
- ii. material : Steel
- iii. overall size : 42 mm long x 3.5 mm diameter
- iv. centres : 200 mm around the perimeter and 300 mm in the middle of the board

7. Cladding Boards Outer

Manufacturer

: British Gypsum

Reference

: Fireline

Material

: Gypsum based plasterboard

Thickness

: 12.5 mm

Fixing method

: Through screwed on the unexposed face to track sections and vertical studs, items 1, 2 and 3

Fixings

- i. type : Self drilling, self tapping drywall screws
- ii. material : Steel
- iii. overall size : 42 mm long x 3.5 mm diameter
- iv. centres : 200 mm around the perimeter and 300 mm in the middle of the board



buildingboards.co.uk info@rcmltd.biz 0800 612 4662

Company VAT GB 228 9169 73

Company Reg 05155573

Registered in England. Registered office: Unit 25-26, Rosevale Rd, Parkhouse Ind Est West, Newcastle-under-Lyme, ST5 7EF