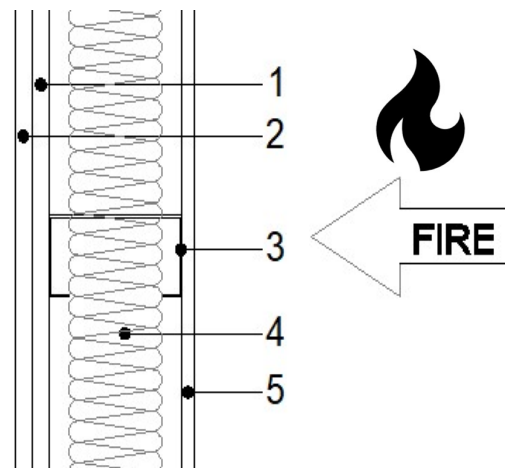


## FIRE SUBSTANTIATION SHEET

ISO 5209

**SYSTEM:** RCM 12mm Ywall – 90 minute Non-loadbearing.

**Fire Rating:** 90 MINUTES  
**Test Reference** WF 173150



### Test Build-up

Layer

- |                          |                                       |
|--------------------------|---------------------------------------|
| (1) Internal Face Layer: | 12.5mm British Gypsum Fireline.       |
| (2) Internal Face Layer: | 12.5mm British Gypsum Fireline.       |
| (3) Stud:                | Hadley 100 F50 12 @ 600mm Centres.    |
| (4) Insulation:          | Rockwool RW3 100mm.                   |
| (5) Outer Layer:         | RCM 12mm Ywall fixed @ 300mm centres. |

### TEST RESULTS:

|                              |                      |
|------------------------------|----------------------|
| Test Laboratory:             | Warrington fire      |
| Test Standard:               | BS 476: Part 22 1987 |
| Original Test Date:          | 03/06/2008           |
| System re-assessed:          | 15/06/2022           |
| Integrity:                   | 105 minutes.         |
| Insulation:                  | 99 minutes.          |
| Non-loadbearing Result (EI): | 90 minutes.          |

## SCHEDULE OF COMPONENTS

|                        |  |
|------------------------|--|
| Head track             | Hadley steel 104 T70 12  |
| Fixings                | Spit MHT32 Ø6.4x50mm @ 600mm                                   |
| Base track             | Hadley steel 104 T40 12  |
| Fixings                | Spit MHT32 Ø6.4x50mm @ 600mm                                   |
| Vertical stud          | Hadley steel 100 F50 12  |
| Fixings to fixed edge  | Spit MHT32 Ø6.4x50mm @ 600mm                                   |
| Fixings between tracks | Spit CFC 16 Ø4.8x17.5mm 4off                                   |
| Cladding boards        | RCM Y-Wall 12mm  |
| Fixings                | Self drilling self-tapping drywall screw Ø3.5x42mm @ 200&300mm |
| Insulation             | Rockwool RW3 thickness 100mm                                   |
| Insulation ret. Angle  | Galv. 47x24mm 0.6mm thickness                                  |
| Fixings                | Spit CFC 16 Ø4.8x17.5mm @ 450&550mm                            |
| Cladding boards        | Lafarge G Tec 12.5mm   |
| Fixings                | Self drilling self-tapping drywall screw Ø3.5x42mm @ 200&300mm |



[buildingboards.co.uk](http://buildingboards.co.uk) [info@rcmltd.biz](mailto:info@rcmltd.biz) 0800 612 4662

Company VAT GB 228 9169 73

Company Reg 05155573

Registered in England. Registered office: Unit 25-26, Rosevale Rd, Parkhouse Ind Est West, Newcastle-under-Lyme, ST5 7EF