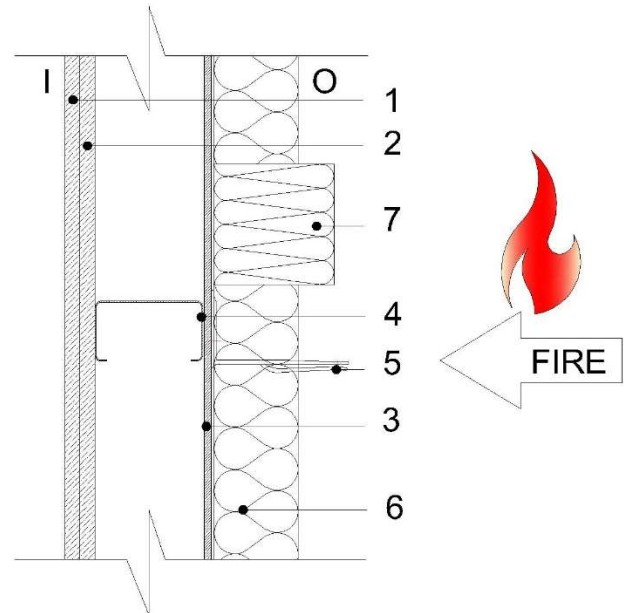


FIRE SUBSTANTIATION SHEET

ISO 5207

SYSTEM: RCM 12mm Y-wall – 120-minute Loadbearing.
Test reference EUI-19-B 0000096-A
Rev2
Fire Rating: 120 MINUTES



Test Build-up

Layer

- | | |
|---------------------------|--|
| (1) Internal Face Layer: | 15mm British Gypsum Soundbloc Type D. |
| (2) Internal Face Layer: | 15mm British Gypsum Soundbloc Type D. |
| (3) Outer Layer: | RCM 12mm Ywall fixed @ 300mm centres. |
| (4) Stud: | 90mm Metsec (090M12-50) @ 600mm Centres. |
| (5) Helping hand Bracket: | F1/F1+.115D6 Allface aluminium |
| (6) Insulation: | Knauf Earthwool/Rockwool Duo Slab 75mm (≥45kg/m3). |
| (7) Fire Barrier: | RCM Mineral Wool 100x100mm |

TEST RESULTS:

Test Laboratory:	Efectis
Test Standard:	BS EN 1363-1:2012 and 1365-1:2012
Original Test Date:	10/07/2019
Integrity:	135 minutes.
Insulation:	135 minutes.
Loadbearing Capacity (Deflection):	135 minutes.
Loadbearing Result (EI):	120 minutes.

SCHEDULE OF COMPONENTS

<i>Description</i>	<i>Reference</i>	<i>Material</i>	<i>Characteristics</i>	<i>Manufacturer</i>
Self drilling anchors to fix the head and base transom to the frame	4H	Metal	6.3 x 45 mm	EJOT
Self drilling screws to fix stud to head track	JT2-N3	Metal	5.5 x 19 mm	EJOT
Screws to fix insulation to Y-Wall	SW8 R	Carbon steel	4.8 x 110 mm	EJOT
Washers to fix insulation to Y-Wall	SBV Washers	Plastic	8/90 mm	EJOT
Screws st.stl to fix insulation to Y-Wall	JT3D6H5.5/6.	Stainless Steel	3 x 127 mm	EJOT
Washers	DMT 85/7-E Washers	Stainless Steel	0.5 x 85 mm	EJOT
Self drilling screws to fix brackets on to stud	JT3 3	Stainless Steel	6.3 x 50 mm	EJOT
Self drilling screws to fix T-rail to the bracket	JT4 4	Stainless Steel	4.8 x 19 mm	EJOT
Wall bracket – Helping Hand Bracket	F1.115D6.5 x 2	Aluminium	115 x 65 x 90 mm Th: 2 mm	ALLFACE
Wall bracket – Helping Hand Bracket	F1+115D6.5 x 2	Aluminium	115 x 65 x 175 mm Th: 2 mm	ALLFACE
T-Rail	A-T12006020	Aluminium	3000 x 120 x 60 x 2 mm	ALLFACE
SFS Head Track	094M12-40	Steel	1.2 x 3000 mm	METSEC
SFS Base Track	094M12-40	Steel	1.2 x 3000 mm	METSEC
SFS Stud (all)	090M12-50	Steel	1.2 x 3000 mm	METSEC
Insulation	Rainscreen Earthwool	Mineral Wool	1200 x 600 x 75 mm d : 45 kg/m3	KNAUF
Fire Barrier both horizontal and vertical	Fire Barrier	Mineral Wool	100 x 100 x 100 mm d : 45 kg/m3	RCM
Fire Barrier Brackets	B65-110	Stainless Steel	80 x 80 x 1 mm	RCM
Fixings to Fire Brackets	BMHH5.5-38-3	Stainless Steel	5.5 x 38 mm	EVOLUTION
Plasterboard Screws	Stainless Steel	3.5 x 42 mm	SPEEDLINE	



buildingboards.co.uk info@rcmltd.biz 0800 612 4662

Company VAT GB 228 9169 73

Company Reg 05155573

Registered in England. Registered office: Unit 25-26, Rosevale Rd, Parkhouse Ind Est West, Newcastle-under-Lyme, ST5 7EF

Fixing Strap	GF S1 Fixing Strap	Steel	2400 x 70 x 0.5 mm	BRITISH GYPSUM
Plasterboard	Gyproc Soundbloc	Plasterboard	2700 x 1200 x 15 mm d : 947 kg/m ³	BRITISH GYPSUM
Sheathing Board	YW241212A	Y-Wall calcium Silicate	2400 x 1200 x 12 mm d: 1200 kg/m ³ (nominal)	RCM
Wing tip self drilling fixings	FIX006	Steel	4.8 x 38 mm	RCM
Y-Wall thermal Pad F1	YTPF1S6	Y=Wall Calcium Silicate	90 x 65 x 6 mm d: 1200 kg/m ³ (nominal)	RCM
Y-Wall thermal Pad F1+	YTPF1D6	Y-Wall Calcium Silicate	175 x 65 x 6 mm d: 1200 kg/m ³ (nominal)	RCM
Modified low modulus Silicone Sealent	SUND017A	Modified Silicone	Tubes	FIRETHERM



buildingboards.co.uk info@rcmltd.biz 0800 612 4662

Company VAT GB 228 9169 73

Company Reg 05155573

Registered in England. Registered office: Unit 25-26, Rosevale Rd, Parkhouse Ind Est West, Newcastle-under-Lyme, ST5 7EF