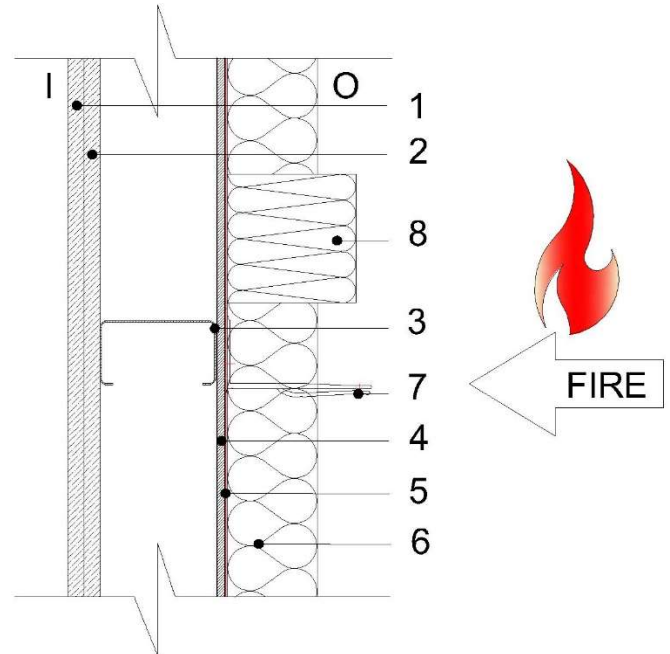


FIRE SUBSTANTIATION SHEET

ISO 5205

SYSTEM: RCM 9mm Ywall – 120minute Non-Loadbearing.

Fire Rating: 120 MINUTES
Test Reference EUI-19-B 0000096-B
Rev2



Test Build-up

Layer

- (1) Internal Face Layer:
- (2) Internal Face Layer:
- (3) Stud:
- (4) Outer Layer:
- (5) Breather membrane:
- (6) Insulation:
- (7) Helping hand Bracket
- (8) Fire barrier

12.5mm British Gypsum std Wallboard.
12.5mm British Gypsum std Wallboard.
90mm Metsec (090M12-50) @ 600mm Centres.
RCM 9mm Ywall fixed @ 300mm centres.
Proctor Wraptite 0.65mm Triple layer PP micro porous film laminate. (Acrylic Self adhesive)
Knauf Earthwool/Rockwool Duo Slab 75mm ($\geq 45\text{kg/m}^3$) fixed mechanically.
F1/F1+.115D6.5 Allface aluminium
RCM Mineral Wool 100x100mm

TEST RESULTS:

| | |
|------------------------------|--------------|
| Test Laboratory: | Efectis |
| Test Standard: | BS EN 1364-1 |
| Original Test Date: | 10/07/2019 |
| Integrity: | 132 minutes. |
| Insulation: | 132 minutes. |
| Non-Loadbearing Result (EI): | 120 minutes. |

SCHEDULE OF COMPONENTS

| Description | Reference | Material | Characteristics | Manufacturer |
|---|----------------------|-------------------------|---|----------------|
| Self drilling anchors to fix the head and base transom to the frame | 4H | Metal | 6.3 x 45 mm | EJOT |
| Self drilling screws to fix stud to head track | JT2-N3 | Metal | 5.5 x 19 mm | EJOT |
| Screws to fix insulation to Y-Wall | SW8 R | Carbon steel | 4.8 x 110 mm | EJOT |
| Washers to fix insulation to Y-Wall | SBV | Plastic | 8/90 mm | EJOT |
| Washers | Washers | | | |
| Screws st.stl to fix insulation to Y-Wall | JT3D6H5.5/6. | Stainless Steel | 3 x 127 mm | EJOT |
| Washers | DMT 85/7-E | Stainless Steel | 0.5 x 85 mm | EJOT |
| Washers | Washers | | | |
| Self drilling screws to fix brackets on to stud | JT3 3 | Stainless Steel | 6.3 x 50 mm | EJOT |
| Self drilling screws to fix T-rail to the bracket | JT4 4 | Stainless Steel | 4.8 x 19 mm | EJOT |
| Helping Hand Bracket | F1.115D6.5 x 2 | Aluminium | 115 x 65 x 90 mm Th: 2 mm | ALLFACE |
| Helping Hand Bracket | F1+115D6.5 x 2 | Aluminium | 115 x 65 x 175 mm Th :2 mm | ALLFACE |
| T-Rail | A-T12006020 | Aluminium | 120 x 60 x 2 mm | ALLFACE |
| SFS Slotted Head Track | 094M16 -70s | Steel | 1.6 x 3000 mm | METSEC |
| SFS Base Track | 094M12-40 | Steel | 1.2 x 3000 mm | METSEC |
| SFS Stud | 090M12-50 | Steel | 1.2 x 3000 mm | METSEC |
| Insulation | Rainscreen Earthwool | Mineral Wool | 1200 x 600 x 75 mm d: 45kg/m3 | KNAUF |
| Fire Barrier both horizontal and vertical | CSCB Fire Barrier | Mineral Wool | 100 x 100 x 100 mm d: 45kg/m3 | RCM |
| Fire Barrier Brackets | B65-110 | Stainless Steel | 80 x 80 x 1 mm | RCM |
| Fixings | BMHH5.5-38-3 | Stainless Steel | 5.5 x 38 mm | EVOLUTION |
| Plasterboard Screws | BZP 10065219 | Steel | 3.5 x 42 mm | SPEEDLINE |
| Plasterboard | Wallboard | Plasterboard | 2700 x 1200 x 12.5 mm | BRITISH GYPSUM |
| Fixing Strap | GF S1 Fixing Strap | Steel | 2400 x 70 x 0.5 mm | BRITISH GYPSUM |
| Sheathing Board | YW241209A | Y-Wall Calcium Silicate | 2400 x 1200 x 9 mm d: 1200 kg/m3 (nominal) | RCM |
| Wing Tip Self Drilling Fixings | FIX006 | Steel | 4.8 x 38 mm | RCM |
| Y-Wall thermal Pad F1 | YTPF1S6 | Y=Wall Calcium Silicate | 90 x 65 x 6 mm d: 1200 kg/m3 (nominal) | RCM |

| | | | | |
|--|-----------|---|---|-----------|
| Y-Wall thermal Pad F1+ | YTPF1D6 | Y-Wall Calcium Silicate | 175 x 65 x 6 mm d: 1200 kg/m3 (nominal) | RCM |
| Modified Low Modulus Silicone | SUND0017A | Modified Silicone | Tubes | FIRETHERM |
| Flexible Self Adhesive Breather Membrane | Wraptite | Triple layer polypropylene micro-porous film laminate, with a proprietary acrylic moisture vapour permeable adhesive and silicone coated PET release liner. | 1500 x 0.65 mm | PROCTOR |



buildingboards.co.uk info@rcmltd.biz 0800 612 4662

Company VAT GB 228 9169 73
Company Reg 05155573

Registered in England. Registered office: Unit 25-26, Rosevale Rd, Parkhouse Ind Est West, Newcastle-under-Lyme, ST5 7EF