

**supertech**<sup>TM</sup>



**A1 Fire Classification to EN 13501-1: 2018**

# Contents

## Introduction

### Products

Key Product Feature P4  
Colours and Finishes P4

### Design

System principle: ventilated rainscreen P6  
Surface mounted features P6  
High wind loading or exceptional impact requirements P6  
Ventilation P7  
Breather membrane P7  
Battens or Metal Subframe P7  
EPDM gasket P8  
Perforated closures P9

### Installation

Installing Supertech Weatherboard P9  
Cutting and fixing methods P9  
Handling and storage P11

14 steps to Weatherboard installation P13

Step 1. Fit breather membrane P13  
Step 2. Fix battens or metal subframe to the wall P13  
Step 3. Fix EPDM gasket to the battens P14  
Step 4. Attach perforated closures to top & bottom of battens P14  
Step 5. Fix vertical profiles P15  
Step 6. Fix horizontal starter profiles P16  
Step 7. Cut and fix Supertech Weatherboard P16  
Step 8. Jointing of Supertech Weatherboard P17  
Step 9. Finishing top of wall details P17  
Step 10. Abutments and gables P17  
Step 11. Corner options P18  
Step 12. Window details P20  
Step 13. Deflection zone details` P20  
Step 14. Coastal location information P21

### Appendix of drawings

NHBC Recommended - Timber Battens P22  
Non NHBC - Timber Battens P28  
NHBC Recommended - Z Profile P34  
Non NHBC - Z Profile P40

### Ancillary Information

Touch Up Paint P46  
Health & Safety P46  
Efflorescence P47  
Maintenance P47

# Introduction

Supertech Weatherboard is a simple to install, fully ventilated rainscreen cladding system which has an appearance similar to that of timber but the durability and strength of cement. A single facet autoclaved refined cellulose fibre cement board, Supertech Weatherboard is lightweight, requires little maintenance, can be used in the same way as timber and allows you to create truly stunning façades. Offering a ranges of natural timber effect painted finishes, Supertech Weatherboard is an attractive alternative to traditional timber boarding and plastic effect PVCu cladding.

Supertech Weatherboard holds a BBA Agrément Certificate No.19/5708 Product Sheet 3, as a fibre-cement board for use as an exterior non-loadbearing cladding on vertical timber, metal supports over masonry, brickwork or timber or steel frame on new and existing domestic and non-domestic buildings, subject to height limitations. This demonstrates its versatility regarding the application onto variable structure types and use of building types, be they commercial or dwellings.

The product has a reaction to fire classification of A1 in accordance with BS EN 13501-1 : 2018 (see BBA certificate section 4.6 and 7 for restricted timber support uses) affording its use where fire classification is a key requirement in the project design criteria.

The performance of the Supertech Weatherboard has an expected service life in excess of 30 years, offering longevity as an ideal choice for specifiers and clients seeking an alternative for flat panelled façade systems. It also satisfies the relative requirements in relation to the NHBC standards Part 6 and 6.9 extending the opportunities to specify it where insurers are operating in the domestic dwellings sector.

This Third-party accreditation demonstrates the stringent testing regimes and standards that Supertech Weatherboard has met, following a testing path for strength and stability, behaviour to fire, weathertightness and durability. All of which ensure a high level of performance is achieved for the use of Supertech Weatherboard for your project specification.

## Key Product Features

- Fully tested BBA approved and CE marked
- Fully ventilated system
- Choice of Weatherboard dimensions within the range
  - 3660mm x 190mm x 7.5mm
  - 3660mm x 230mm x 7.5mm
- Resistant to rot, fungus or insect attacks
- High levels of weather resistance
- Low maintenance, long performance life
- Easy to install using standard woodworking tools
- \*Available in wide range of RAL, BS or NCS colours
- UK factory applied colour
- Range of colour matching aluminium trims available
- Cut and installed in the same way as timber
- A1 Classification to BS EN 13501-1:2018
- Low minimum order quantities for specific colours
- Dimensionally stable

## Colours and Finishes

Supertech Weatherboard is available in a wide range of colours.

Whilst we do all that we can to maintain consistency when producing batches of colour, we do however advise that you order all elevations at the same time for complete peace of mind.



Traffic White  
RCM/WP01/S



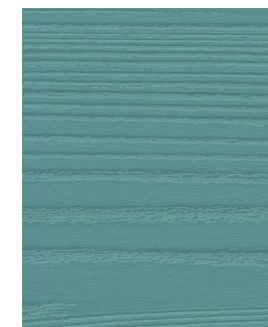
Light Grey  
RCM/WP02/S



Oyster White  
RCM/WP03/S



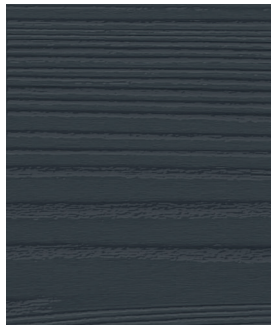
Light Ivory  
RCM/WP04/S



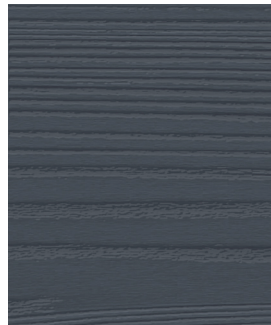
Pastel Turquoise  
RCM/WP06/S



Jet Black  
RCM/WP07/S



Iron Grey  
RCM/WP08/S



Dark Grey  
RCM/WP09/S



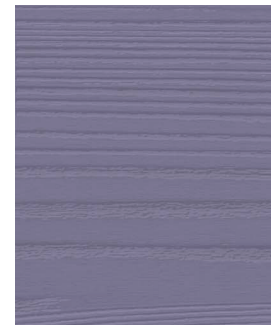
Khaki Brown  
RCM/WP10/S



Dark Brown  
RCM/WP11/S



Lavender Blue  
RCM/WP12/S



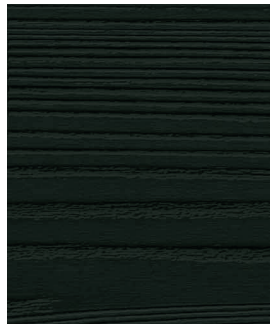
Lilac Blue  
RCM/WP13/S



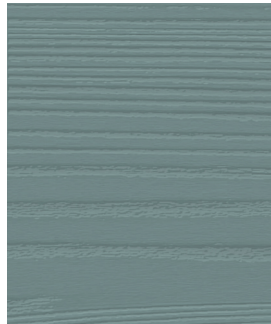
Sand Yellow  
RCM/WP14/S



Red  
RCM/WP15/S



Pine Green  
RCM/WP16/S



Blue Grey  
RCM/WP17/S



Grey Brown  
RCM/WP18/S



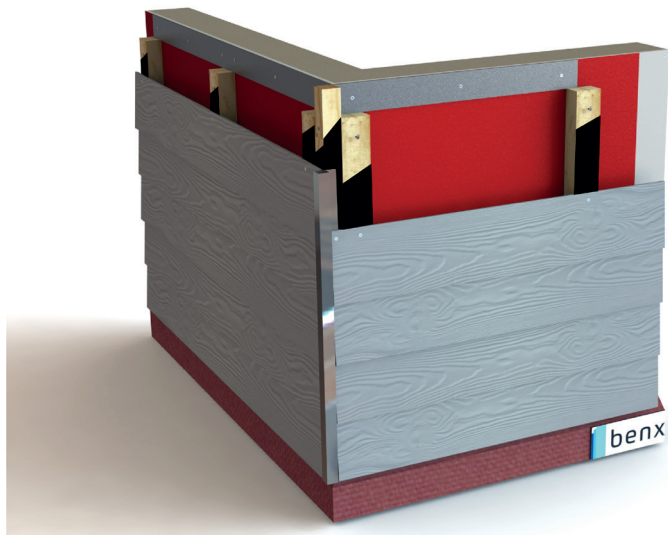
Grey Green  
RCM/WP20/S

## System principle: ventilated rainscreen

Supertech Weatherboard is installed to a ventilated rainscreen principle. The objective of the system is to create an air flow at the base of the system whilst creating ventilation at the top of the elevation.

A minimum ventilation gap of 38mm must be created behind the Supertech Weatherboard, with a 10mm ventilation gap at the top and bottom of the system to create a full ventilation flow. The purpose for this function is to remove moisture from within the cavity. Failure to create a full air flow could lead to possible problems with the overall system.

A 10mm gap should also be left under window heads and cills, at the soffit line to ensure complete ventilation.



## Surface Mounted Features

When Supertech Weatherboard is subject to additional items being fixed to the building i.e. gutters canopies etc. they should be fixed through the Supertech Weatherboard and into the primary structure or into the main sub structure. Alternatively they can be fixed into additional battens installed behind the Supertech Weatherboard.

Clearance holes should be allowed for when fixing these items through the Supertech Weatherboard. Under no circumstances should the Supertech Weatherboard be used to carry structural loadings.

## High Wind Loading or Exceptional Impact Requirements

When installing Supertech Weatherboard it is important to fully understand the wind loading of the structure that the product is being applied to. If the wind loading exceeds 1.0kN/m<sup>2</sup> please contact the Benx technical team on 0800 612 4662. Alternatively consult BBA Certificate 19/5708 Product Sheet 3 clause 6.1 to 6.4

Where Supertech Weatherboard could be subject to exceptional impact loads on application at low level, high pedestrian areas, schools, leisure facilities additional timber battens should be installed between the standard battens to increase the performance of the sub structure and the Supertech Weatherboard impact resistance. See BBA Certificate 19/5708 Product Sheet 3 clause 6.5 for further detail.

## Fire

Supertech Weatherboard with all standard solid colours achieves the highest possible classification to BS EN 13501-1:2018 providing a reaction to fire, Non-Combustible, A1 classification. This classification relates to mounting applications of treated 38 x 47mm timber battens or metal profiles, when fixed with nails or screws (please refer to fixing section for specification of fixings).

When specifying Supertech Weatherboard in consideration of fire the specifier needs to ensure that the maximum permitted heights are not exceeded. Furthermore, consideration and placement of open and closed state cavity fire barriers to close the cavity in the event of fire. In addition closer/interface around windows is an additional consideration.

Other considerations are the type of insulation and breather membrane. We recommend that the national Building Regulations and standards are consulted, alternatively please consult with the Benx Technical Services Team. For full limitation the designer shown reference section 7 of BBA Certificate 19/5708 Product Sheet 3.

## Ventilation

To make sure that you obtain the best performance from our product and to avoid interstitial condensation we recommend that you use a minimum 38mm thick timber batten to create a free following cavity behind our Supertech Weatherboard.

We recommend that the cavity has a minimum 5000mm<sup>2</sup>/m run of ventilation. Based on our timber batten recommendation being 38mm this will provide the necessary cavity for this requirement.

## Breather Membrane

Allows the transfer of moisture vapour, restricts the transfer of liquid water and may act as an air barrier. Supertech is not weathertight and must be backed by a suitable breather membrane acting as a vapour-permeable protection. Where required, a wall breather membrane is laid in accordance with the manufactures recommendations, with minimum laps of 150 mm to ensure water can drain away from the building. The timber battens or metal rail supports are vertically fixed over the breather membrane at maximum 600 mm centres. The wall breather membrane should be UV durable to BS EN 13859-2 : 2014, used in conjunction with sheathing on framed applications. RCM ME010 Polyester based breather membrane to be used. The membrane must be fixed behind 38 x 50mm battens. Installed to RCM manufacturers recommendations.

## Battens

Traditionally the subframe for Weatherboard has comprised of 38mm deep vertical timber battens which allow for a free flowing cavity between the breather membrane and the weatherboard. If battens are to be used then a minimum... 38 x 47 mm preservative-treated battens must be used as vertical supports for Supertech at a maximum 600 mm centres, ensuring the specified fixings are fully embedded into the wall substrate. Battens to be pressure treated grade 'B' timber framing vertically spaced at 600mm centres maximum. Supertech is to be overlapped with minimum recommended lap of 30mm, as per manufacturer's instruction.

The use of the product is restricted in some cases. See BBA sections 7.1 7.3 to 7.5 and 7.7

# Installation

If used with timber battens, Supertech should be installed in compliance with National Building Regulations. General guidance on maximum height is set out below

Dwellings - maximum height

England, Scotland, Northern Ireland & Wales - 18m

In addition to single dwellings in England a maximum height of 18m is implemented on multiple dwellings, Student Accommodation. In Scotland, the boundary condition needs to be assessed.

As an alternative to timber battens consideration to the use of a non-combustible steel frame should be given in accordance with national regulation. In terms of fire there is no restriction on height or boundary condition.

There are a number of different ways to install Supertech Weatherboard however, the overall principle is the same. Fix the weatherboard to preservative-treated vertical timber battens of at least 47mm wide that are spaced with a maximum of 600mm centres across the buildings elevation. All weatherboard should be fixed to a minimum of three battens. If this is not possible and it can only be fixed to two, then batten spacing should be reduced to 400mm centres. If your building is subject to high wind loading then your timber battens may need to be reduced to 400mm centres. In order to ensure ventilation, a minimum of a 38mm clear cavity is required behind the weatherboard. At the base and head as well as the window and door heads and sills a 10mm continuous opening should be left.

Please note that timber battens are not part of our portfolio, however, where required, Benx offer an alternative range of A1 Non combustible support frames, these include:

Aluminum Z profile. Cavity depth 38mm, this is typically used for low to medium rise applications and can be fixed back to both masonry and framed buildings. (please refer to image below)

Allface Helping Hand system. Cavity depth 50mm-300mm. This is typically used on medium to high rise applications where the cavity depth needs to vary and can be fixed back onto either masonry or framed buildings. (please refer to image below)

TASH- Add the three (FIVERR) images from the sales brochure

## EPDM Gasket

EPDM is used for sealing interfaces i.e. windows, doors and penetrations, to provide airtight or weather tight seals. When jointing two Supertech Weatherboards, fix both boards to one batten. Please be sure the EPDM gasket is already installed to the battens as this will provide a protective strip against moisture ingress.

Boards should be loose butt-jointed together, do not use force. To all windows and penetrations use RCM ME220 & ME241 EPDM corners. For timber battens, an EPDM strip is attached to each batten starting from the top and stapling at intervals to ensure a flush fit. The 50mm wide RCM EPDM gasket should be installed to each batten by stapling to the top of the batten then allowing the gasket roll to drop thereby taking out any slack, then staple at regular intervals down the length of the batten and trim to size.



# Installation

## Perforated Closures

Perforated profiles are available in various widths to prevent ventilation entering through the cavity ventilation gap used at base, top and window openings of cladding. All ventilation openings around the periphery of a cladding system should be suitably protected with a ventilation protection mesh or a perforated sheet or similar.

A minimum ventilation gap of 38 mm must be provided between Supertech Weatherboard and the substrate wall, and a perforated closure is installed at the base, top, and above and below window frame openings on the top and bottom of the sub-frame.

## Installing Supertech Weatherboard

**Cutting** - Supertech Weatherboard can be cut, drilled and nailed with conventional woodworking tools in a similar fashion to timber. There are a number of different cutting methods to choose from depending on the quantity of material to be cut.

RCM offers a complete fabrication service for Supertech Weatherboard, please contact our sales department for details 0800 612 4662

Cutting and drilling should be carried out in a dry and well-ventilated area with all cuts being wiped to remove dust with a clean, dry cloth. .

Handsaw: We recommend the use of a hardened point saw which should only be used for small quantities.

Electric jigsaw: When cutting Supertech Weatherboard with an electric jigsaw, it is our advice that you turn the board over to ensure a clean finish on the front side of the board.

Hand-held circular saw: A hand-held circular saw with blades suitable for cutting fibre cement products is ideal for cutting large quantities.

For cutting the product in any volume, we recommend the use of an RCM polycrystalline diamond Dart Blade to avoid excessive wear on other blades.

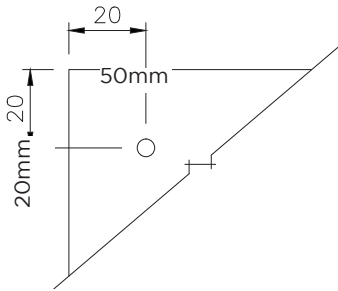
As above, we recommend that the board is turned over before cutting in order to avoid marking the front face of the product. A test cut is always recommended. When cutting or drilling Supertech Weatherboard wear appropriate PPE and use dust extract.

**Screwing (Recommended Method)** - When fixing to the support structure it is our recommendation that fixings are at least 20mm away from the top edge and 50mm from the end of the board (screw gun required). Pre-drilling of Supertech Weatherboard is not generally required.

If a screw is required within 50mm of the board edge then pre-drilling and a countersink is required.

Using anti corrosion treated steel countersunk head screw — 4.2 mm shank diameter, 42 mm length with a 10 mm diameter, with minimum 500 hours salt-spray corrosion resistance

# Installation



Screws suitable for the installation of the Supertech Weatherboard are available from RCM and can be supplied self-coloured or colour matched to a chosen colour. Please contact RCM on 0800 612 4662.

## Nailing

By hand: When hand nailing there is no requirement for pre-drilling providing the nail placements are at least 50mm from the edge of the weatherboard.

If the nail is to be fixed closer than 50mm, then pre-drilling is required. Holes should be pre-drilled 20mm from the edge of the board with a 3mm drill bit. Regular sharpening of HSS drill bits will ensure clean drill holes where required. Nails should be stainless steel ring shank, minimum size 2.65 by 40 mm with a 7 mm head diameter annular ring shank, to BS 1202-1 : 2002

Please take care when nailing Supertech Weatherboard.

Pneumatic: Supertech Weatherboard can be pneumatically at least 50mm from the edge of the board. Nail fixings — 2.65 by 40 mm with a 7 mm head diameter annular ring shank, to BS 1202-1 : 2002 for attaching the board to the timber batten support.

Care must be taken regarding the selection of the nail gun to be used. Nail guns with a narrow head (the nail looks more like a “T” section) are not acceptable.

In order to calculate the depth of the fixing to ensure nails are left flush with the board front, a test should be carried out. This will also help to determine the minimum distances required from the edge of the board and provide a guide for placements.

In order to prevent nails being fired through the board, or being left standing proud of the face of the board, nail guns must be adjustable. For all fixings in marine environments please contact Benx Technical Services for advice.

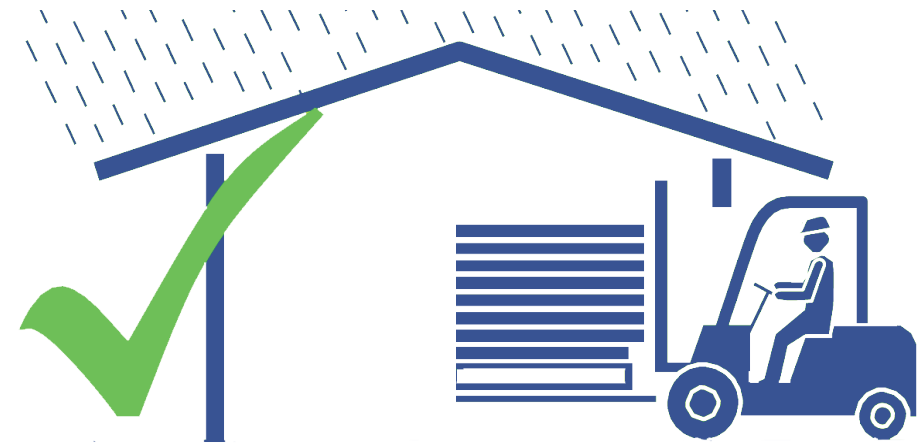
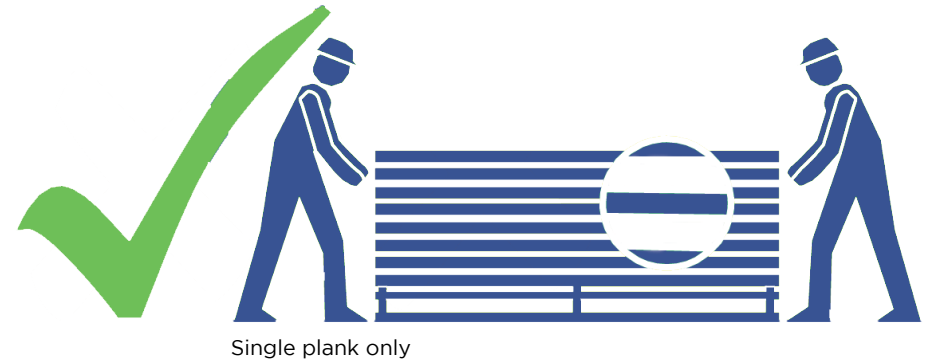
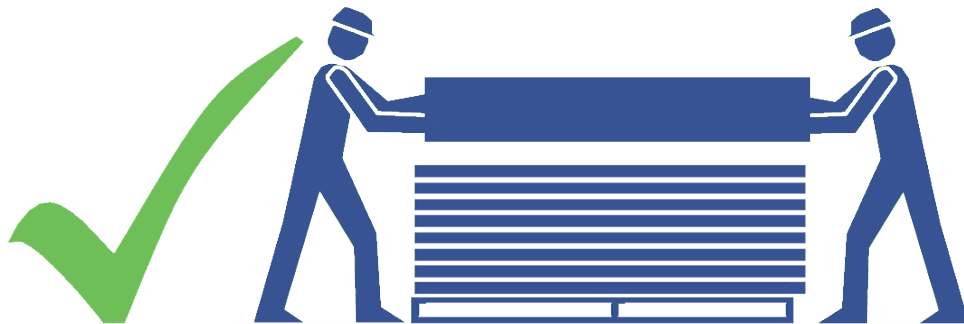
When installing vertical systems we recommend that only screws are used and not nails.

# Installation

## Handling & Storage

Supertech Weatherboard should be stored undercover and off the ground on the pallets on which it is supplied. Additional outer wrap packaging for protection during transportation should be removed to release any trapped moisture and then the pack re-covered with an opaque tarpaulin.

It is important to ensure that the reverse side of the weatherboard is kept dry during storage and installation. The protective interleaving should always be put back in place when re stacking. The weatherboard should be protected from staining from mud or other site wet trades.



# Installation

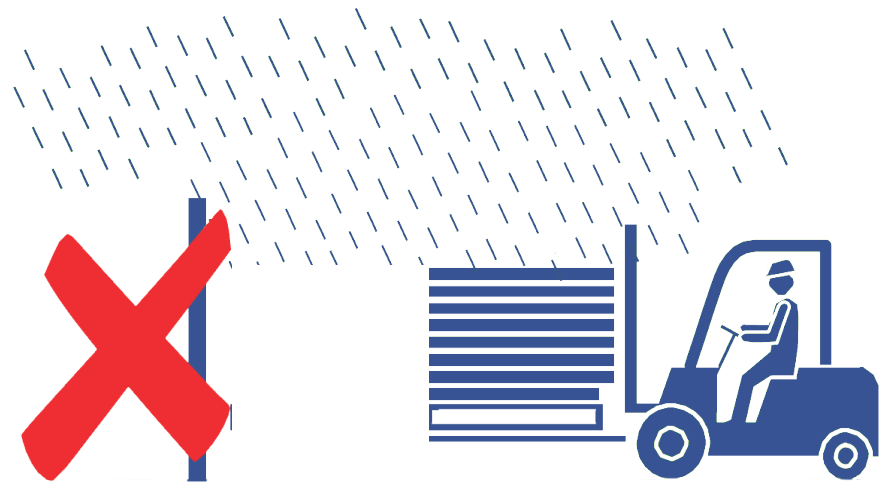
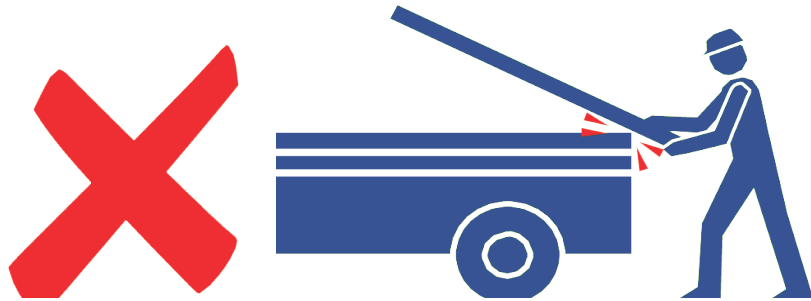
Care should be taken at all times when handling Supertech Weatherboard on the flat, as it can break. While the board is stored on the flat, it should be fully supported along its full length on purpose designed pallets. Manual handling is best carried out with the boards carried on their sides after being turned on to its side before being lifted off the stack, and then ideally carried by 2 handlers to provide support along the length of the Supertech Weatherboard.

Supertech Weatherboard should not be slid or dragged across another surface as it would damage the finished surface.

Please refer to the RCM Supertech Weatherboard handling and storage labels on each pallet.



Single plank only



## 14 Steps to Supertech Weatherboard Installation

1. Fit breather membrane
2. Fix battens or metal profiles to the wall
3. Fix EPDM gasket to the battens
4. Attach perforated closures to the top and bottom battens
5. Fix vertical profiles
6. Fix horizontal starter profiles
7. Cut and fix Supertech Weatherboard
8. Jointing of Supertech Weatherboard
9. Finishing top of wall details
10. Abutments and gables
11. Corner options
12. Window details
13. Deflection Zone
14. Coastal location information

### Step 1 - Fit breather membrane

Where required a breather membrane should be fixed to the outer face of the sheathing board, with an overlap between the layers of membrane as required by the manufacturer. Care should be taken to ensure that the membrane is lapped to drain any water away to the outside of the building.

**Breather Membranes can be supplied by RCM, please contact sales on 0800 6124662.**

### Step 2 - Fix battens to wall

If using timber battens, position and fix the vertical battens. Battens should be spaced with a maximum of 600mm centres apart. This should be reduced in high wind load.

Batten sizes • Nominal fixing – 38mm x 47mm

Preservative-treated in accordance with BS EN 351-1 : 2007, with timber batten in accordance with BS 5534 : 2014. Guidance on recommended wood preservation is also given in NHBC Standards 2019, Chapter 3.3 Timber preservation (natural solid timber)

The wall battens should be plumb. Irregularities in the installation of the framing and sheathing will be visible in the finished application. Consult fixing manufacturing in relation to background. If metal profiles are being used, please refer to manufacturers recommendations

# Installation

## Step 3 - Fix EPDM gasket to battens

The presence of the EPDM gasket provides additional weather protection to the battens and prevents premature rotting.

The 50mm wide RCM EPDM gasket should be installed to each batten by stapling to the top of the batten then allowing the gasket roll to drop thereby taking out any slack, then staple at regular intervals down the length of the batten and trim to size.

Care must be taken not to stretch the EPDM as this could result in it pulling away from the staple fixing.

**EPDM gaskets can also be applied as an anti-rattle option to metal subframes.**

**RCM supply EPDM gasket - please contact RCM on 0800 612 4662.**

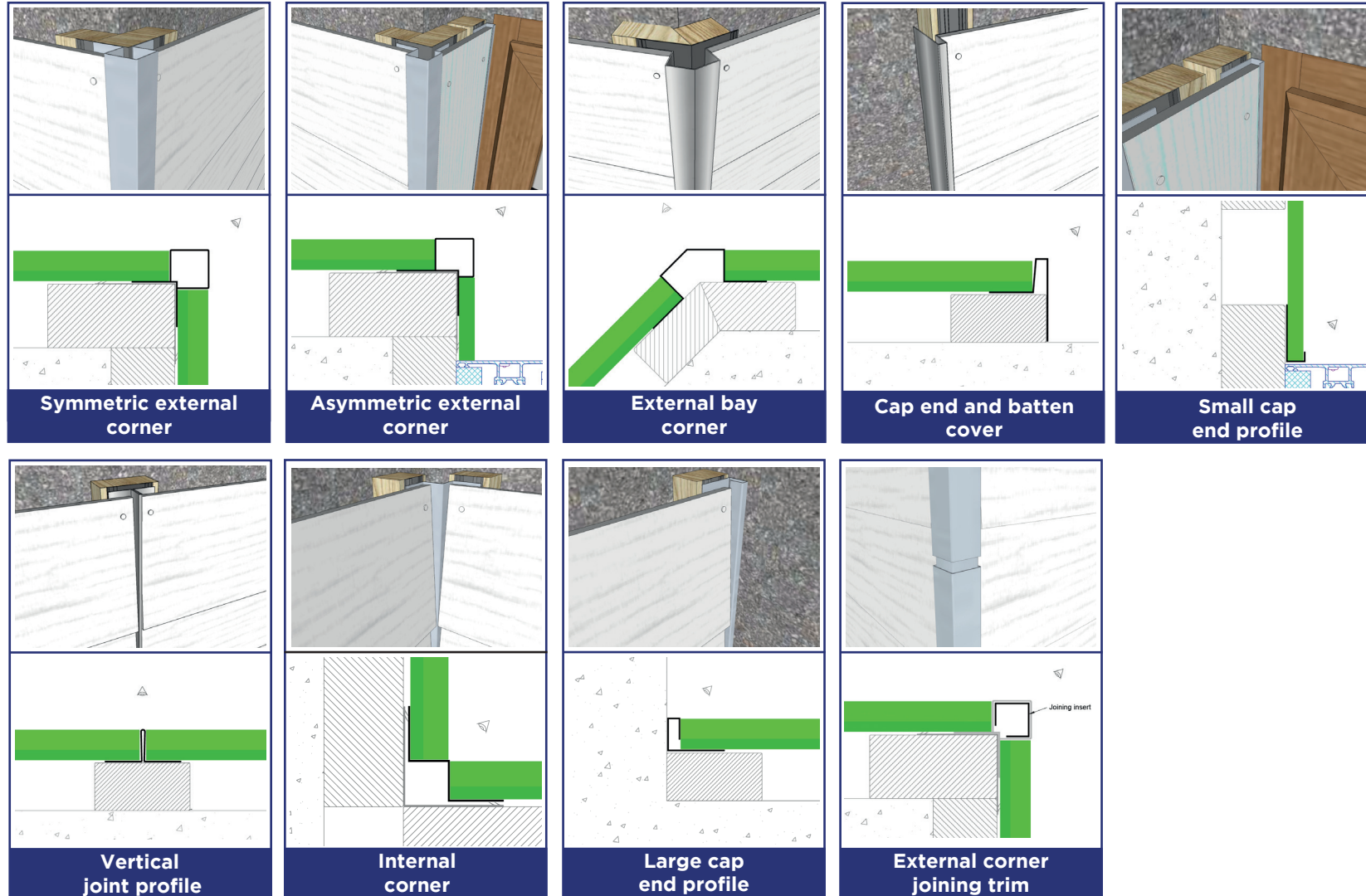
## Step 4 - Attach perforated closures to top and bottom of the battens

The closures should be screwed or nailed to both the top and bottom of the battens. They are designed to allow for air flow through the system whilst preventing access for birds, rodents and large insects.

Perforated closures should also be attached to each door, sill and window head, to prevent animal or insect access whilst maintaining ventilation flow.

# Installation

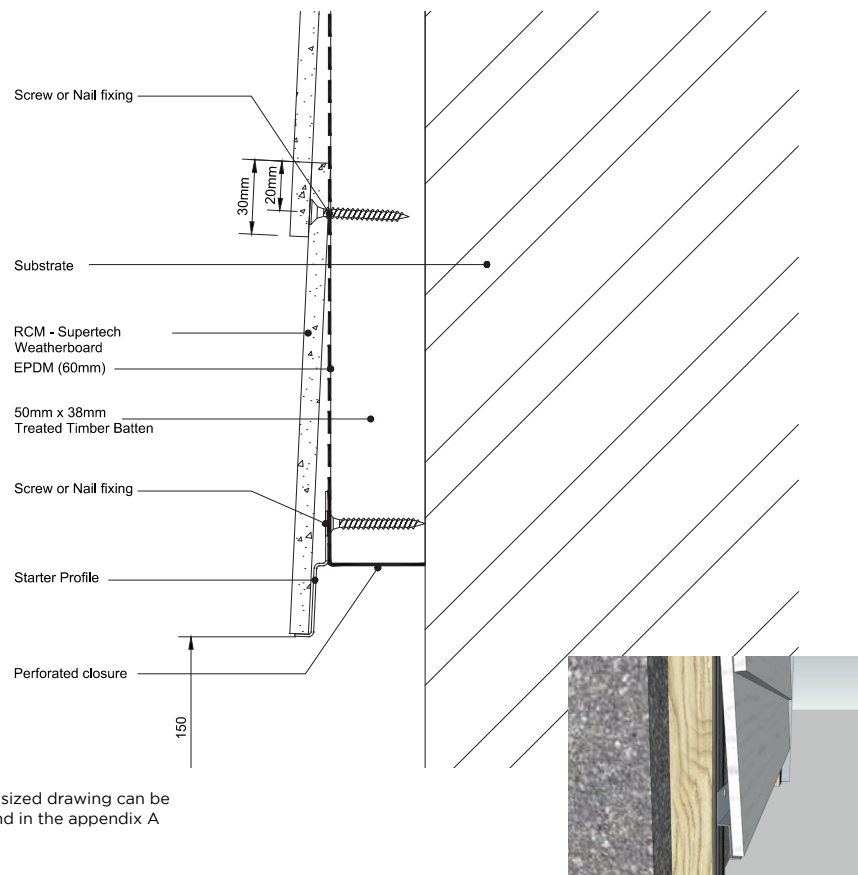
## Step 5 - Fix vertical profiles



# Installation

## Step 6 - Fix horizontal starter profiles

When installing the starter profile it is vitally important that it is fixed on a level plane with either nails or screws. The starter profile will angle the first board into position to ensure that the appearance is correct with the rest of the installation.



## Step 7 - Cut and fix Supertech Weatherboard

### A. Horizontal

Decide on your horizontal laying pattern

- Straight or butt jointed
- Free pattern (with extra care required for joints)
- Semi pattern or broken bond

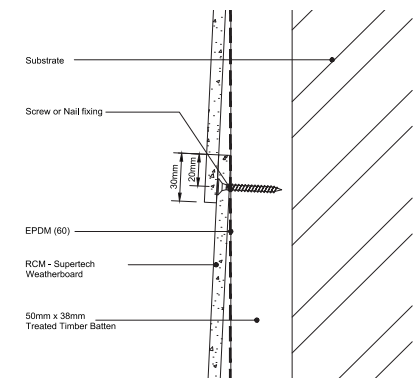
Place the first Supertech Weatherboard onto the starter profile. Ensure that the board is fixed to every batten it crosses. The end of every board must also coincide with a batten.

Lengths of over 400mm must be fixed to at least 3 battens. Fixings must be a minimum of 20mm from the horizontal of the Supertech Weatherboard as shown on p9.

Overlap the next board by 30mm, fix into place then continue fixing Supertech Weatherboard up the wall using the same method.

Each board must be fixed at least once to every support. Allow at least 150mm between bottom edge of Supertech Weatherboard and the ground. Fixing is done through the upper edges of the board.

There is no side overlap, the boards are loose butt jointed against one another with the joint coinciding with a timber support.





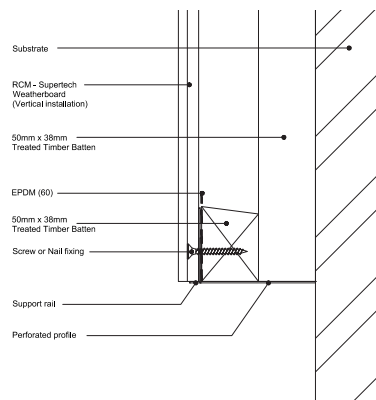
# Installation

## 8. Vertical

Decide on your vertical laying pattern

- Lapped: Supertech Weatherboard should be overlapped by 30mm and all fixings will be visible on the face of the board.
- Flat: Place the first Supertech Weatherboard onto a level 'L' profile, fix backed to the horizontal batten as shown.
- Undulated: Supertech Weatherboard is laid based on an overlap pattern of 30mm.

When installing Supertech Weatherboard vertically, we recommend it is installed as a cross batten system with both vertical and horizontal battens at a maximum of 600mm centres. This allows full air flow behind the Supertech Weatherboard as well as creating fixing points. Please call our technical team for information on all profiles required.



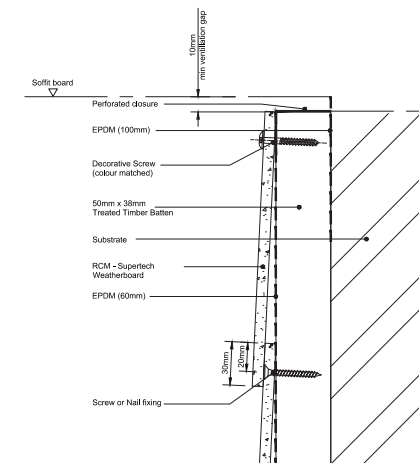
## Step 9 - Jointing of Supertech Weatherboard

When jointing two Supertech Weatherboards, fix both boards to one batten. Please be sure the EPDM gasket is already installed to the battens as this will provide a protective strip against moisture ingress.

Boards should be loose butt jointed together, do not use force.

## Step 10 - Finishing top of wall details

The fixings on the top board will remain visible, therefore we recommend the use of colour matched Supertech Weatherboard screws in order to achieve best results.



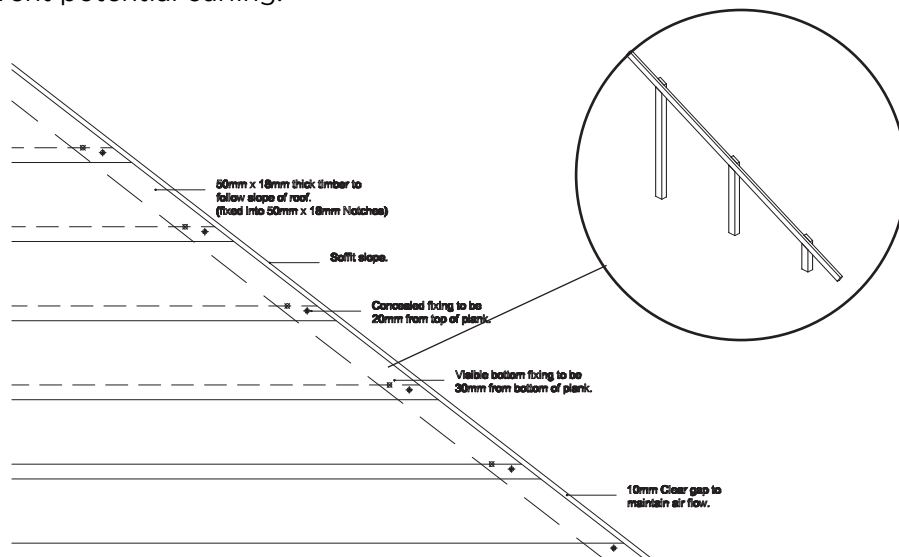
Full sized drawing can be found in the appendix.

# Installation

## Step 10 - Abutments and gables

If the Supertech Weatherboard abuts another material and no end trims are required do not allow the end of board to be more than 100mm past the last fixing point.

If a gable end has a triangular abutment, fix the board both top and bottom to the batten that is parallel to the roof slope in order to prevent potential curling.



## Step 11 - Corner options

There are several options for finishing internal and external corners.

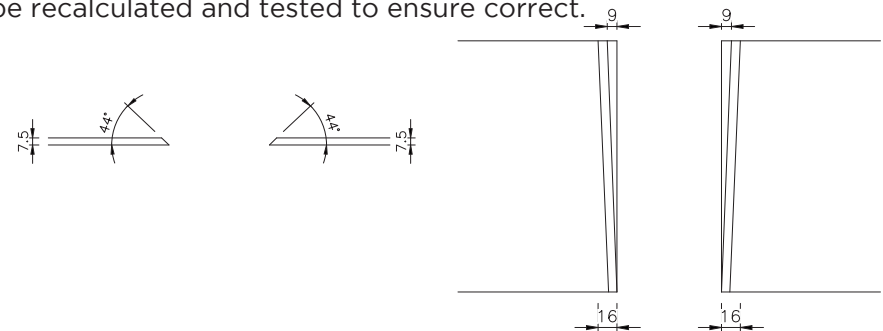
### A. Overlapping corner

Overlap corners can be formed by two overlapping boards, however this exposes a cut edge which would require painting to match the overall finish of the Supertech Weatherboard. Alternatively an RCM external corner profile could be adopted, see appendices drawings ending 0002.

### B. Mitred corner

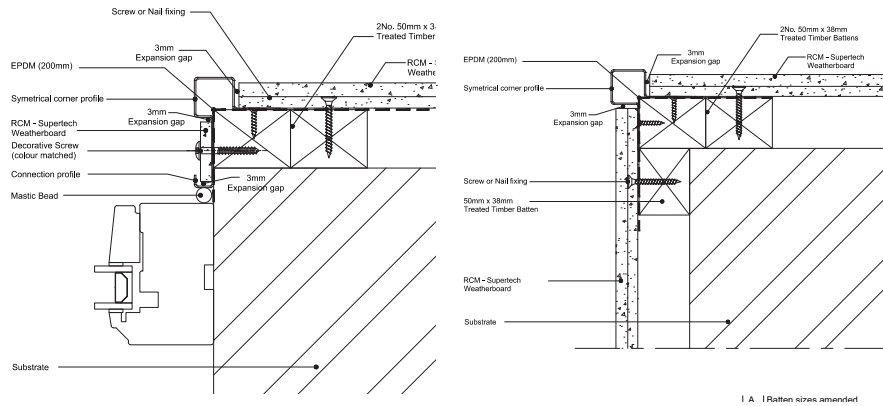
In order to achieve a mitred cut on a 90-degree corner, the Supertech Weatherboard should be cut 23mm longer on the bottom and 13mm longer on the top than the dimensions of the corner of the support battens. Cut the boards at an angle of 44 degrees through the full depth of the board. It is common practice to mark at 45 degrees and then undercut the Supertech Weatherboard.

When cutting a different corner angles, dimensions and angles should be recalculated and tested to ensure correct.

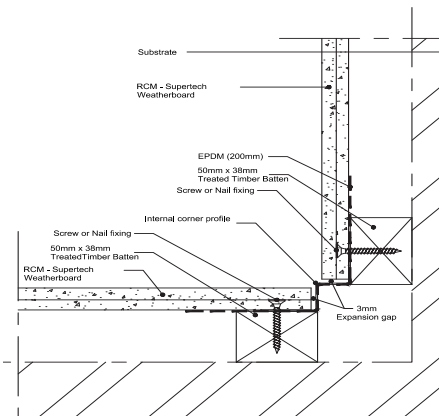


# Installation

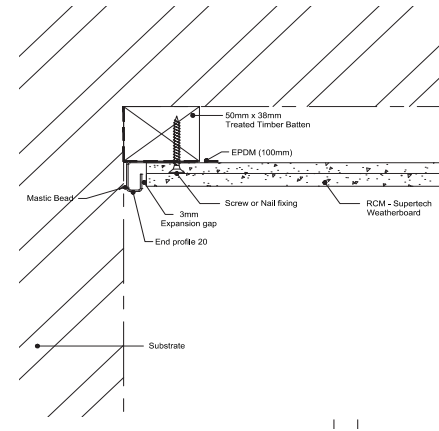
## C. External corner detail



## D. Internal corner detail

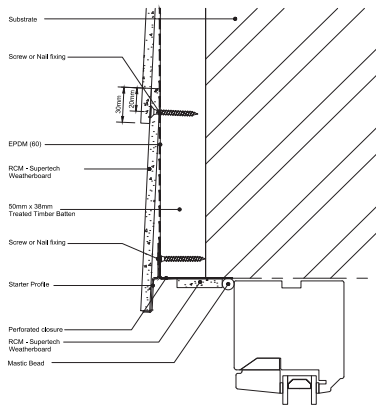


## E. Corner abutment with end profile

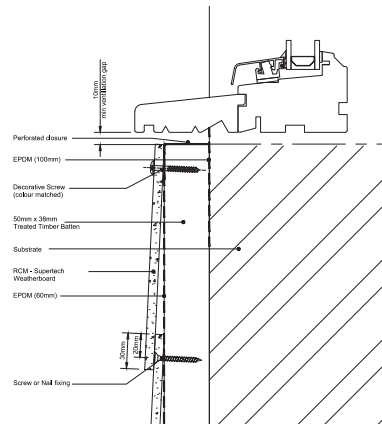


# Installation

## Step 12 - Window options



A. Typical window head detail

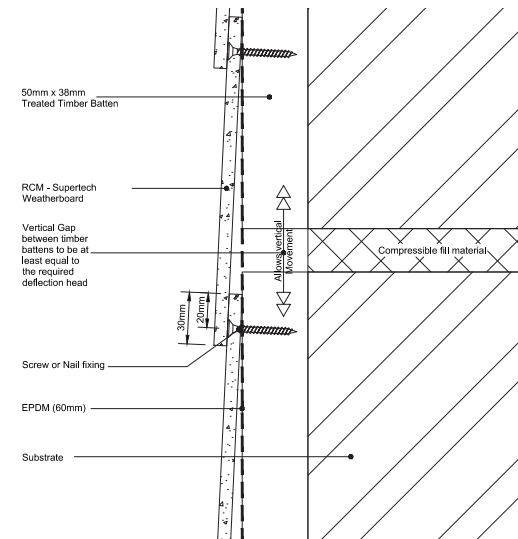


B. Typical window sill detail

## Step 13 - Deflection Zone

A gap equal to or greater than the designed deflection zone must be maintained when installing vertical timber battens in order to allow for movement.

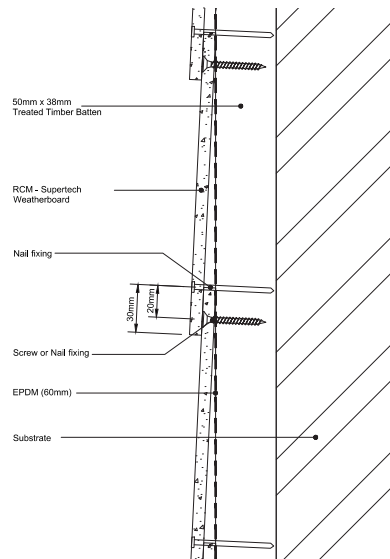
If you have a deflection zone in a coastal location please contact our technical department for details.



# Installation

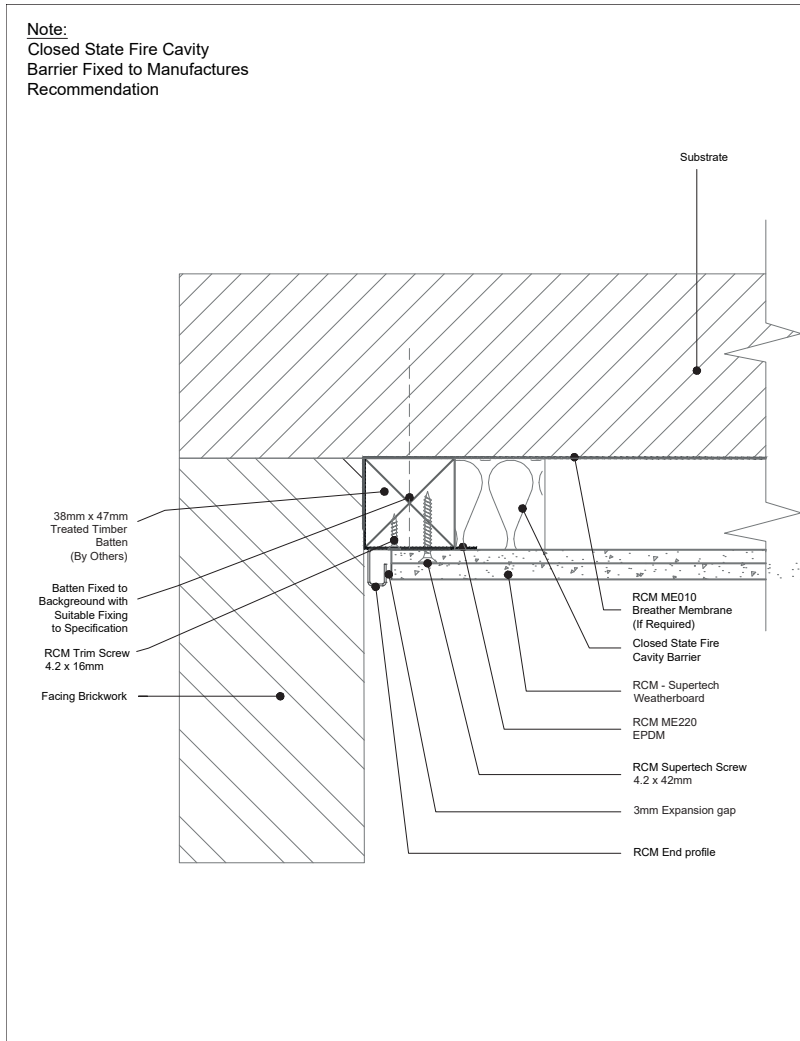
## Step 14 - Coastal location information

When installing Supertech Weatherboard in coastal areas we recommend that additional fixings are used to reduce the chances of board movement. Consult Benx Technical Services for recommendations on stainless steel fixings.



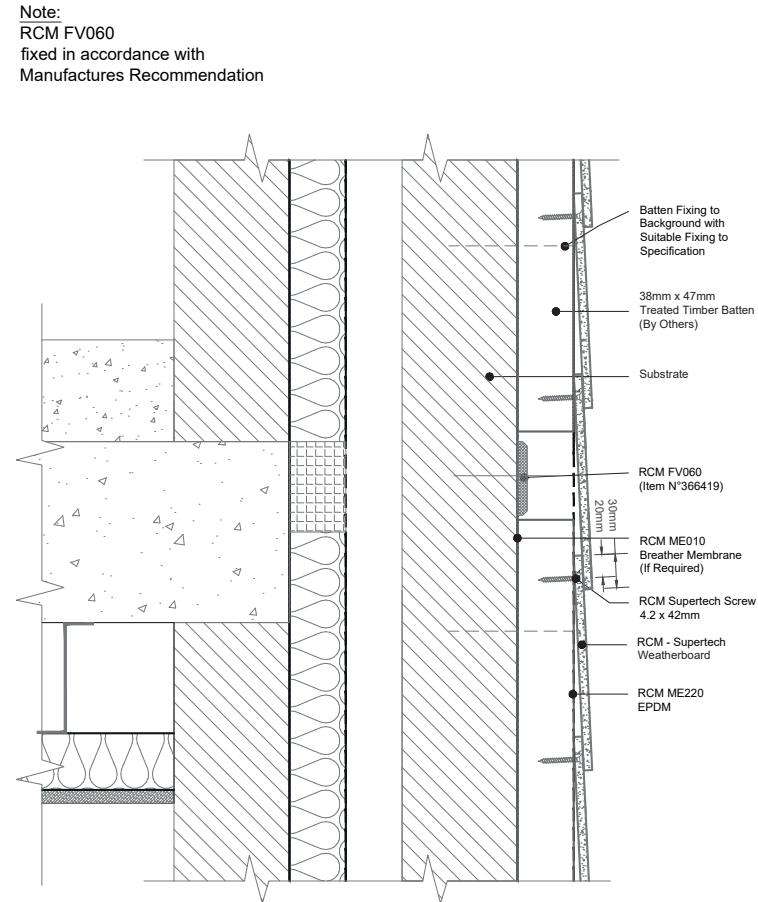
Full sized drawings can be found in the appendix.

# Drawings - NHBC Timber Batten



	Unit 25 - 27 Rosevale Rd, Parkhouse Ind Est West, Newcastle-under-Lyme, Staffordshire, ST5 7EF. Telephone: 0800 612 4662 Email: info@rcmtd.biz	PROJECT: RCM	ISO No: 0000	DRAWN DM	REV	DATE	NOTE	BY
		DRAWING ID: PROJ020-0004		CHECKED DM	001	15/04/21	Final Release	DM
		DESCRIPTION: Timber Batten NHBC Recommendation Supertech - To brick interface		APPROVED DM				
				DATE: 08/04/21				

All performance data & systems specifications are for systems constructed with materials & components as shown. The inclusion or substitution of any other manufacturers materials or components invalidates both test data, system performance and compliance with CDM 2015. The information is provided and users agree details responsibility are assumed by the user of the system. RCM benx does not accept any liability for the accuracy, adequacy or completeness. Because users share responsibility for the validity, we are not responsible for any errors or omissions. From the Benx Group Technical Services Department. This statement should be read in conjunction with the standard terms and conditions of Benx Group.



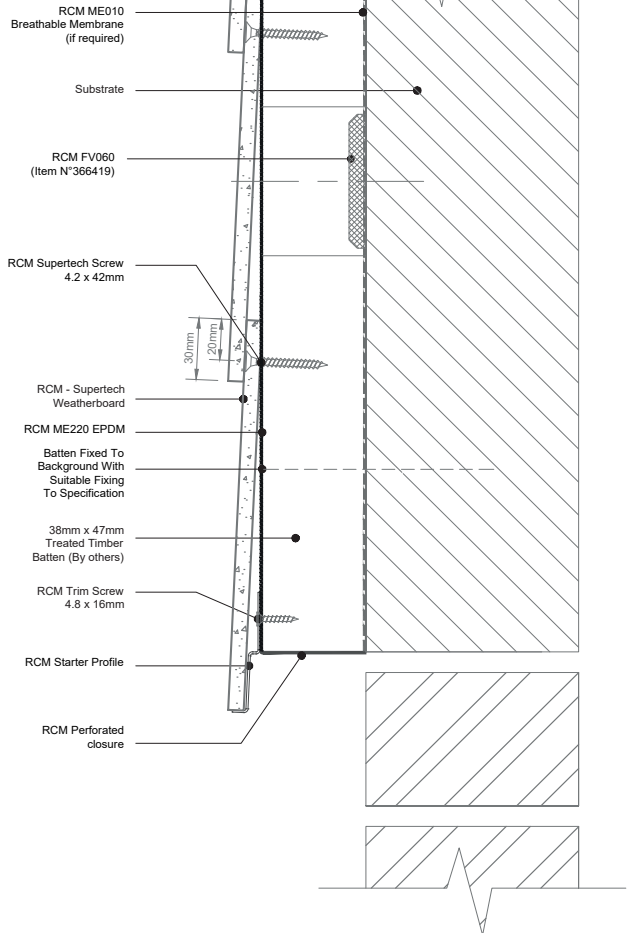
	Unit 25 - 27 Rosevale Rd, Parkhouse Ind Est West, Newcastle-under-Lyme, Staffordshire, ST5 7EF. Telephone: 0800 612 4662 Email: info@rcmtd.biz	PROJECT: RCM	ISO No: 0000	DRAWN DM	REV	DATE	NOTE	BY
		DRAWING ID: PROJ020-0009		CHECKED DM	001	15/04/21	Final Release	DM
		DESCRIPTION: Timber Batten NHBC Recommendation Apartment Separating Floor		APPROVED DM				
				DATE: 08/04/21				

All performance data & systems specifications are for systems constructed with materials & components as shown. The inclusion or substitution of any other manufacturers materials or components invalidates both test data, system performance and compliance with CDM 2015. The information is provided and users agree details responsibility are assumed by the user of the system. RCM benx does not accept any liability for the accuracy, adequacy or completeness. Because users share responsibility for the validity, we are not responsible for any errors or omissions. From the Benx Group Technical Services Department. This statement should be read in conjunction with the standard terms and conditions of Benx Group.

# Drawings - NHBC Timber Batten

## Note:

RCM FV060 fixed in accordance with Manufactures Recommendation

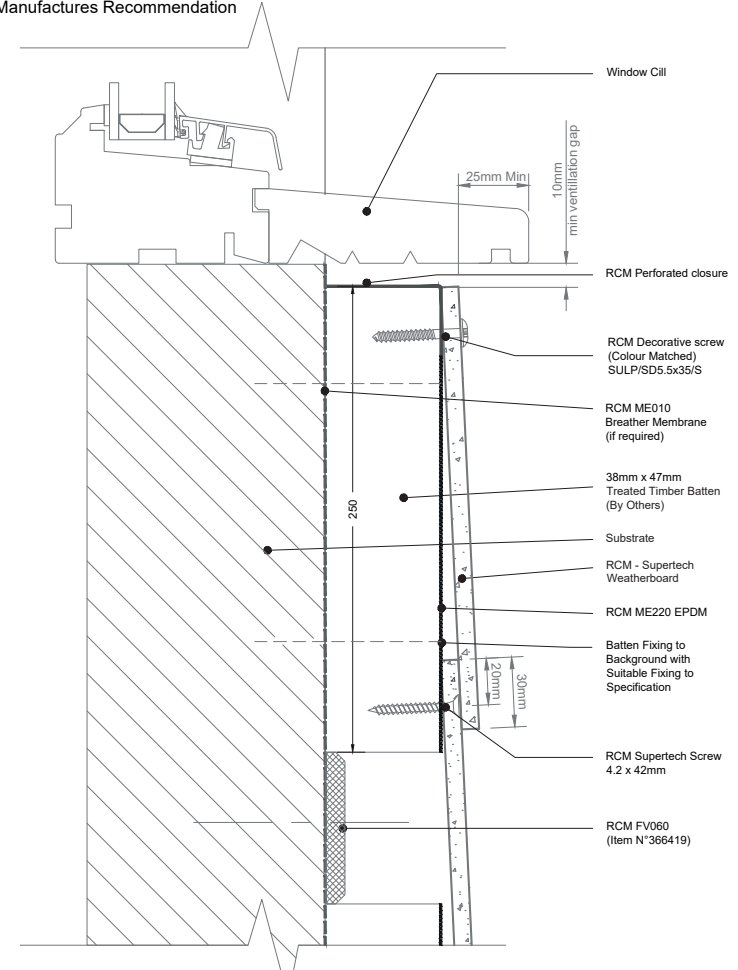


	Unit 25 - 27 Rosevale Rd, Parkhouse Ind Est West, Newcastle-under-Lyme, Staffordshire, S15 7EF. Telephone: 0800 612 4662 Email: info@rcmtd.biz		PROJECT: RCM	ISO NO: 0000	DRAWN DM	REV	DATE	NOTE	BY	
	DRAWING ID: PROJ020-0001		CHECK JM	001	15/04/22			Final Release	DM	
	DESCRIPTION: Timber Batten NHBC Recommendation		A88115							
	Supertech - Base/Starter		DATE:							
			08/04/22							

All performance data & system specifications are for systems constructed with materials & components as shown. The inclusion or substitution of any other manufacture materials or components invalidates both test data, system performance and compliance with CCM 2015. The user assumes full responsibility for any claims or consequences that arise from the use of any other materials or components. This drawing is intended to be used in conjunction with the standard detail and construction of these details. The user assumes full responsibility for any claims or consequences that arise from the use of any other materials or components. This drawing is intended to be used in conjunction with the standard detail and construction of these details.

## Note:

RCM FV060 fixed in accordance with Manufactures Recommendation

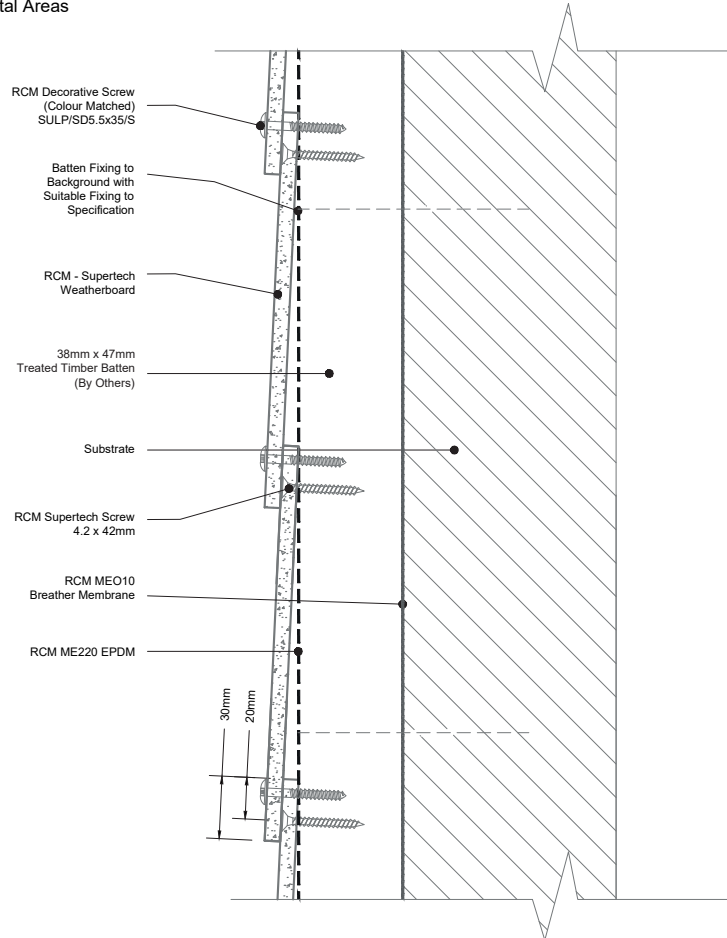


	Unit 25 - 27 Rosevale Rd, Parkhouse Ind Est West, Newcastle-under-Lyme, Staffordshire, S15 7EF. Telephone: 0800 612 4662 Email: info@rcmtd.biz		PROJECT: RCM	ISO NO: 0000	DRAWN DM	REV	DATE	NOTE	BY	
	DRAWING ID: PROJ020-0006		CHECK JM	001	15/04/22			Final Release	DM	
	DESCRIPTION: Timber Batten NHBC Recommendation		A88115							
	Supertech - Window Cill		DATE:							
			08/04/22							

All performance data & system specifications are for systems constructed with materials & components as shown. The inclusion or substitution of any other manufacture materials or components invalidates both test data, system performance and compliance with CCM 2015. The user assumes full responsibility for any claims or consequences that arise from the use of any other materials or components. This drawing is intended to be used in conjunction with the standard detail and construction of these details. The user assumes full responsibility for any claims or consequences that arise from the use of any other materials or components. This drawing is intended to be used in conjunction with the standard detail and construction of these details.

# Drawings - NHBC Timber Batten

**Note:**  
Use Stainless Steel Fixings  
In Coastal Areas

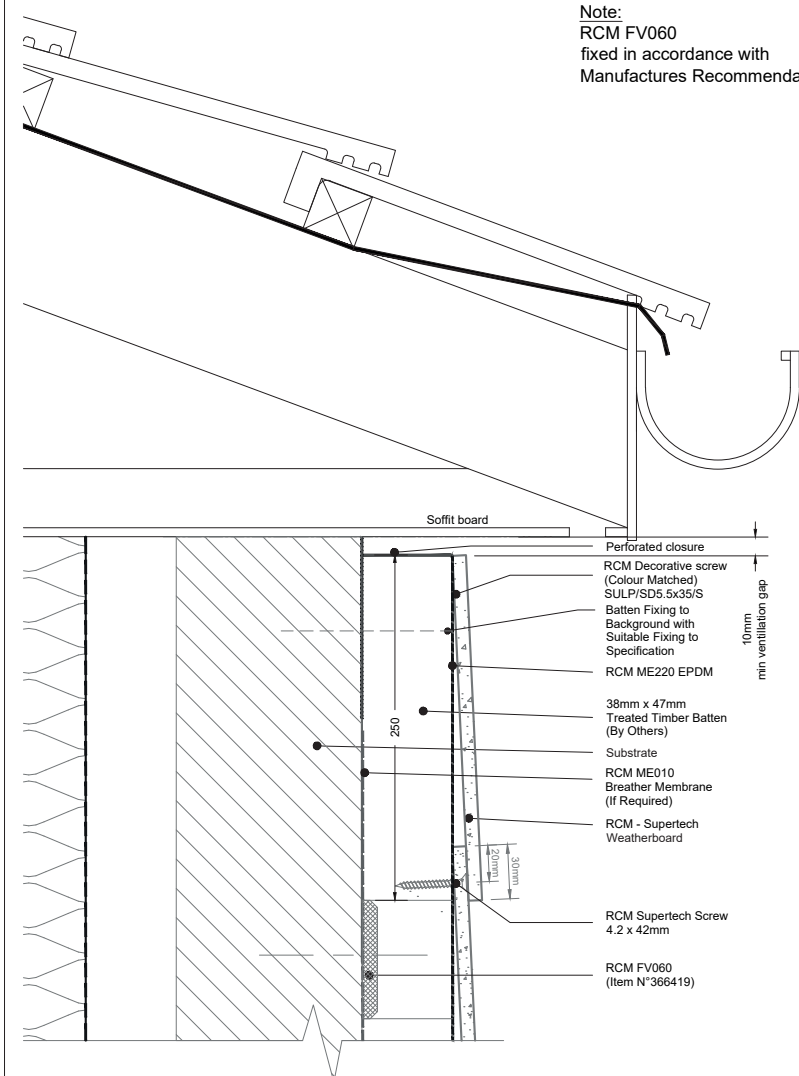


Unit 25 - 27  
Rosevale Rd,  
Parkhouse Ind Est West,  
Newcastle-under-Lyme,  
Staffordshire,  
ST5 7EF,  
Telephone: 0800 612 4662  
Email: info@rcmtd.biz

PROJECT:	ISO No:	DRAWN	REV	DATE	NOTE	BY
RCM	0000	DM				
DRAWING ID:	CHECK	DATE	DATE	DATE	DATE	DATE
PROJ020-0012	JR	001	15/04/21	First Release		DM
DESCRIPTION: Timber Batten NHBC Recommendation	DATE:	DATE:	DATE:	DATE:	DATE:	DATE:
Supertech - Coastal Or High Wind Areas	DATE:	DATE:	DATE:	DATE:	DATE:	DATE:

All performance data & systems specifications are for systems constructed with materials & components as shown. The inclusion or substitution of any other manufacturers materials or components invalidates both test data, system performance and compliance with COM 2015. The manufacturer's data and system details are provided for information only. It is not intended to be used as a guide for any other system. The manufacturer's data and system details are provided for information only. It is not intended to be used as a guide for any other system. The manufacturer's data and system details are provided for information only. It is not intended to be used as a guide for any other system.

**Note:**  
RCM FV060  
fixed in accordance with  
Manufactures Recommendation



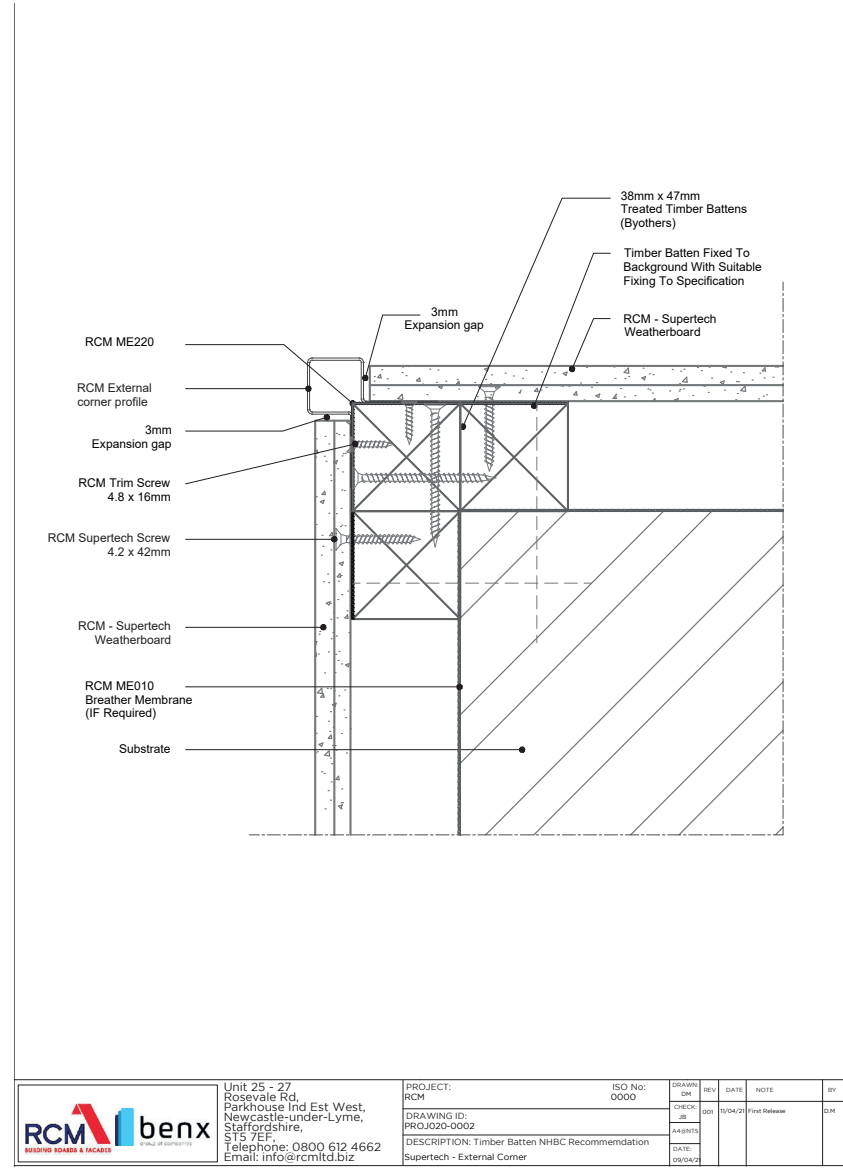
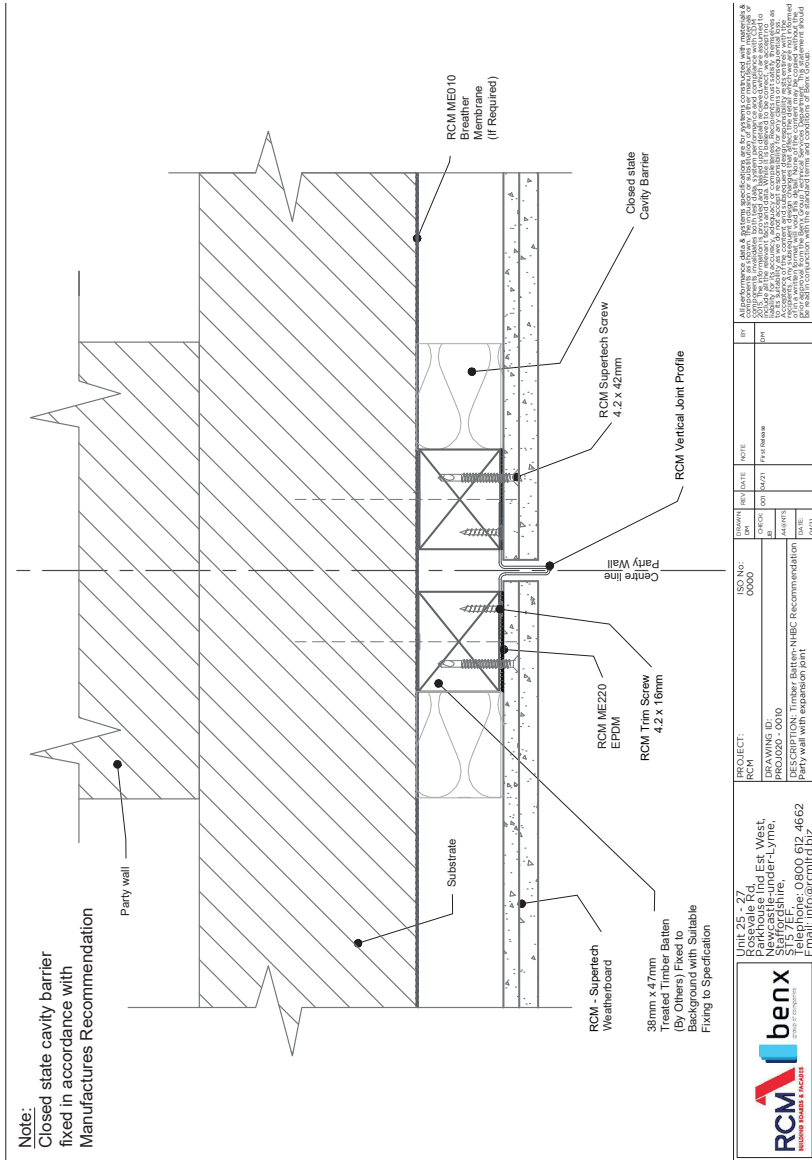
Unit 25 - 27  
Rosevale Rd,  
Parkhouse Ind Est West,  
Newcastle-under-Lyme,  
Staffordshire,  
ST5 7EF,  
Telephone: 0800 612 4662  
Email: info@rcmtd.biz

PROJECT:	ISO No:	DRAWN	REV	DATE	NOTE	BY
RCM	0000	DM				
DRAWING ID:	CHECK	DATE	DATE	DATE	DATE	DATE
PROJ020-0007	JR	001	15/04/21	First Release		DM
DESCRIPTION: Timber Batten NHBC Recommendation	DATE:	DATE:	DATE:	DATE:	DATE:	DATE:
Supertech - Eaves	DATE:	DATE:	DATE:	DATE:	DATE:	DATE:

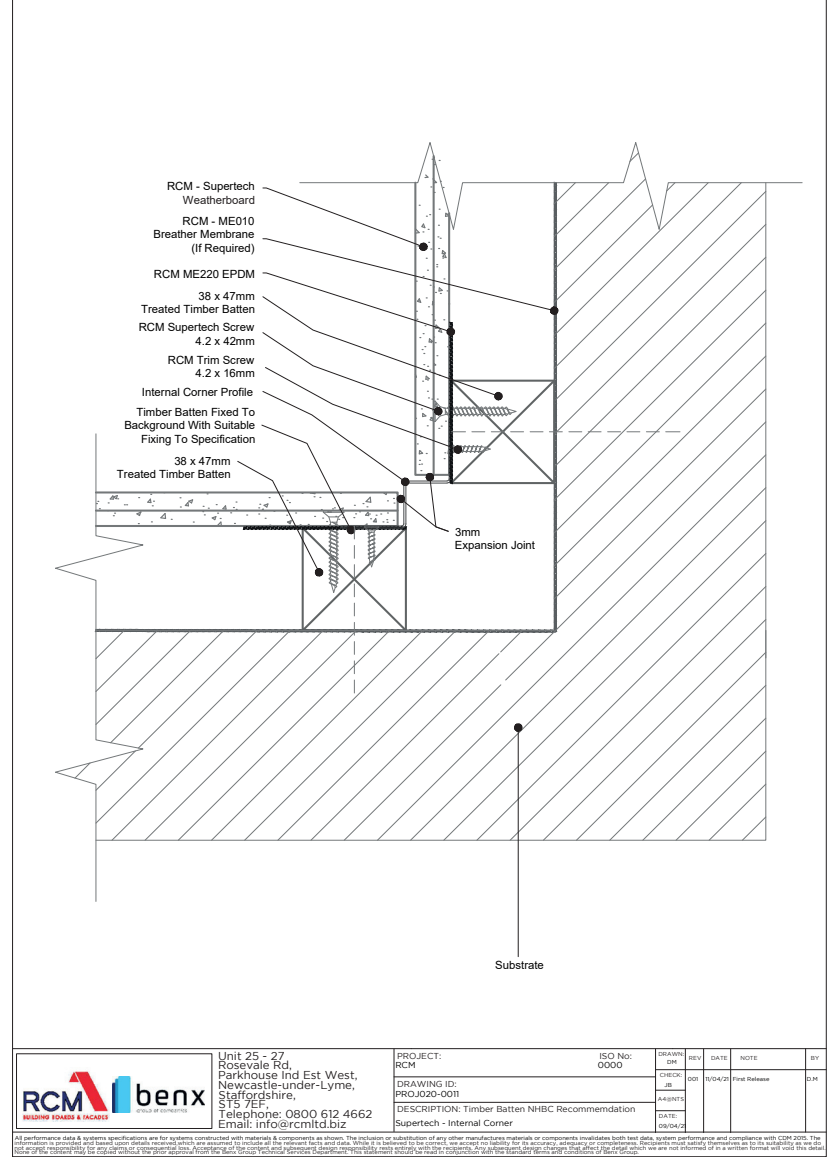
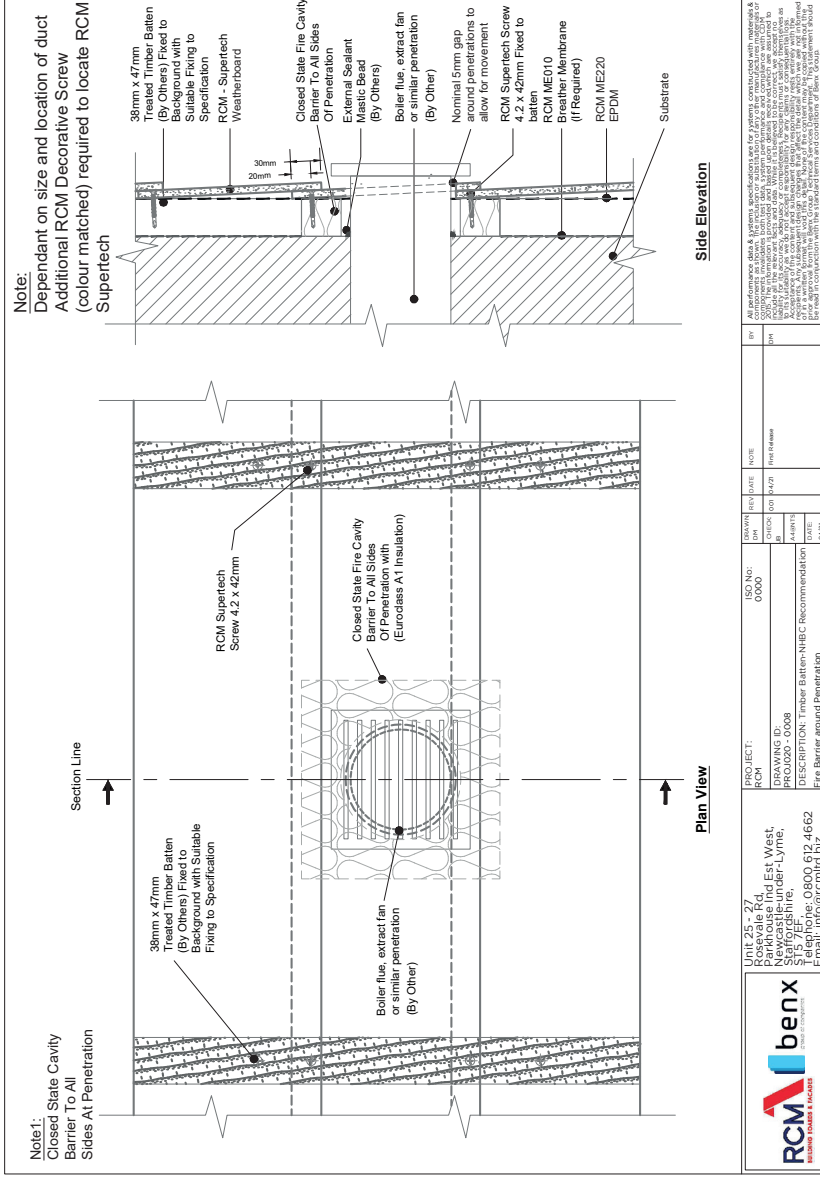
All performance data & systems specifications are for systems constructed with materials & components as shown. The inclusion or substitution of any other manufacturers materials or components invalidates both test data, system performance and compliance with COM 2015. The manufacturer's data and system details are provided for information only. It is not intended to be used as a guide for any other system. The manufacturer's data and system details are provided for information only. It is not intended to be used as a guide for any other system. The manufacturer's data and system details are provided for information only. It is not intended to be used as a guide for any other system.



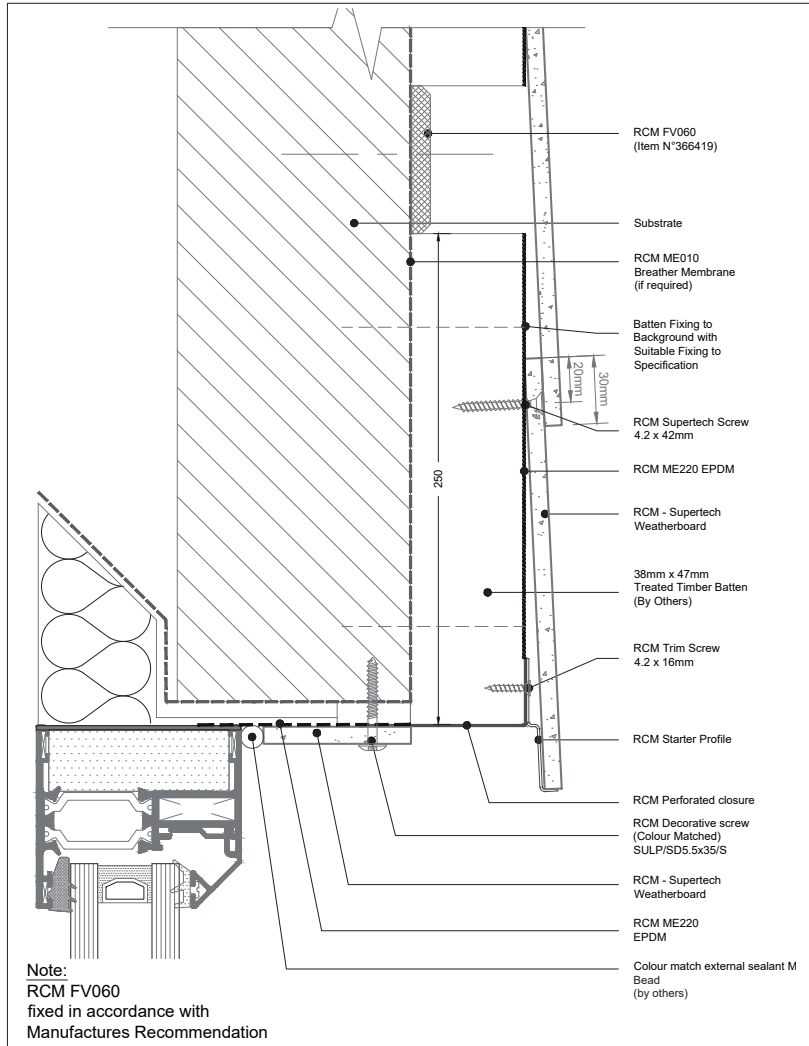
# Drawings - NHBC Timber Batten



# Drawings - NHBC Timber Batten



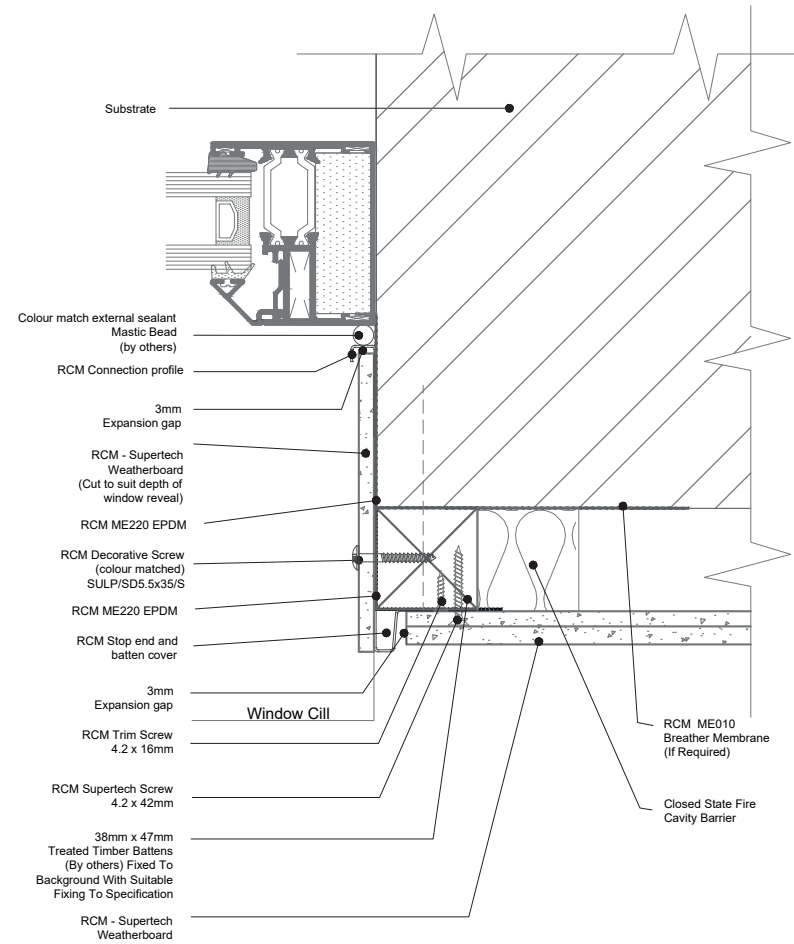
# Drawings - NHBC Timber Batten



**Note:**  
RCM FV060  
fixed in accordance with  
Manufactures Recommendation

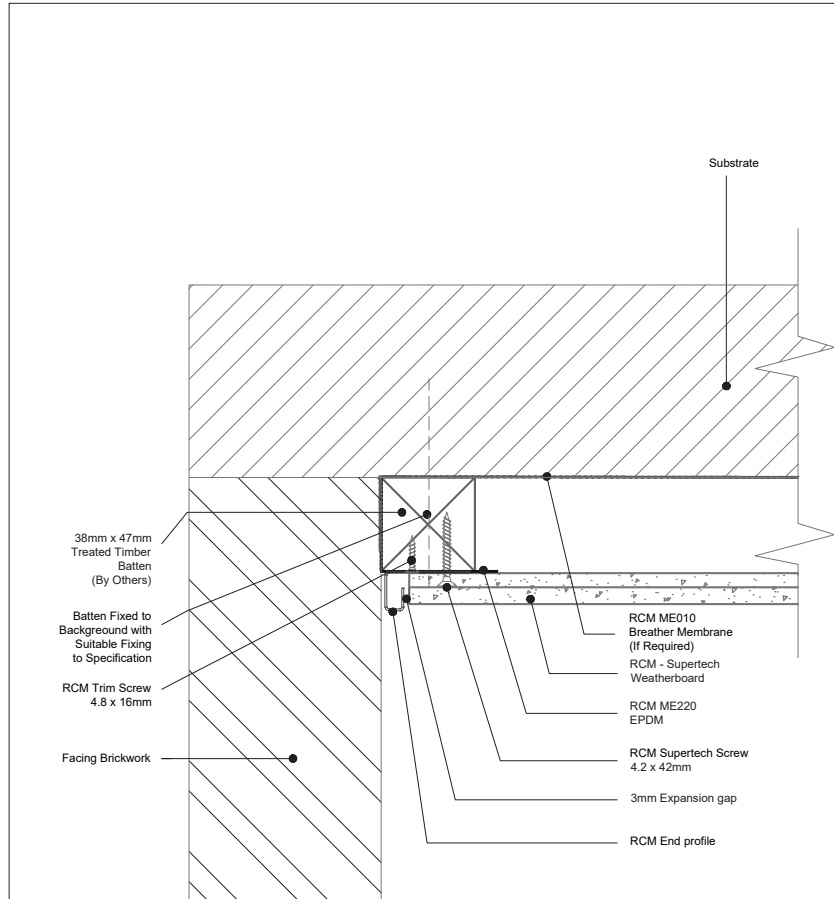
	Unit 25 - 27 Rosevale Rd, Parkhouse Ind Est West, Newcastle-under-Lyme, Staffordshire, ST5 7EF. Telephone: 0800 612 4662 Email: info@rcmtd.biz	PROJECT: RCM DRAWING ID: PROJ020-0005 DESCRIPTION: Timber Batten NHBC Recommendation Supertech - Window Head	ISO No: 0000 REV: 001 DATE: 16/04/21 NOTE: First Release	DRAWN: DM CHECKED: JF DATE: 09/04/21	BY: DM
	<small>All performance data &amp; systems specifications are for systems constructed with materials &amp; components as shown. The inclusion or substitution of any other manufacturers materials or components invalidates both test data, system performance and compliance with CDM 2015. The information is provided for general guidance only. It is not intended to be used as a basis for any legal proceedings. It is the responsibility of the user to ensure that the information is used in accordance with the standard terms and conditions of the manufacturer. The information is provided for general guidance only. It is not intended to be used as a basis for any legal proceedings. It is the responsibility of the user to ensure that the information is used in accordance with the standard terms and conditions of the manufacturer.</small>				

**Note:**  
Closed State Fire Cavity  
Barrier Fixed to Manufactures  
Recommendation



	Unit 25 - 27 Rosevale Rd, Parkhouse Ind Est West, Newcastle-under-Lyme, Staffordshire, ST5 7EF. Telephone: 0800 612 4662 Email: info@rcmtd.biz	PROJECT: RCM DRAWING ID: PROJ020-0003 DESCRIPTION: Timber Batten NHBC Recommendation Supertech - Window Jamb	ISO No: 0000 REV: 001 DATE: 16/04/21 NOTE: First Release	DRAWN: DM CHECKED: JF DATE: 09/04/21	BY: DM
	<small>All performance data &amp; systems specifications are for systems constructed with materials &amp; components as shown. The inclusion or substitution of any other manufacturers materials or components invalidates both test data, system performance and compliance with CDM 2015. The information is provided for general guidance only. It is not intended to be used as a basis for any legal proceedings. It is the responsibility of the user to ensure that the information is used in accordance with the standard terms and conditions of the manufacturer. The information is provided for general guidance only. It is not intended to be used as a basis for any legal proceedings. It is the responsibility of the user to ensure that the information is used in accordance with the standard terms and conditions of the manufacturer.</small>				

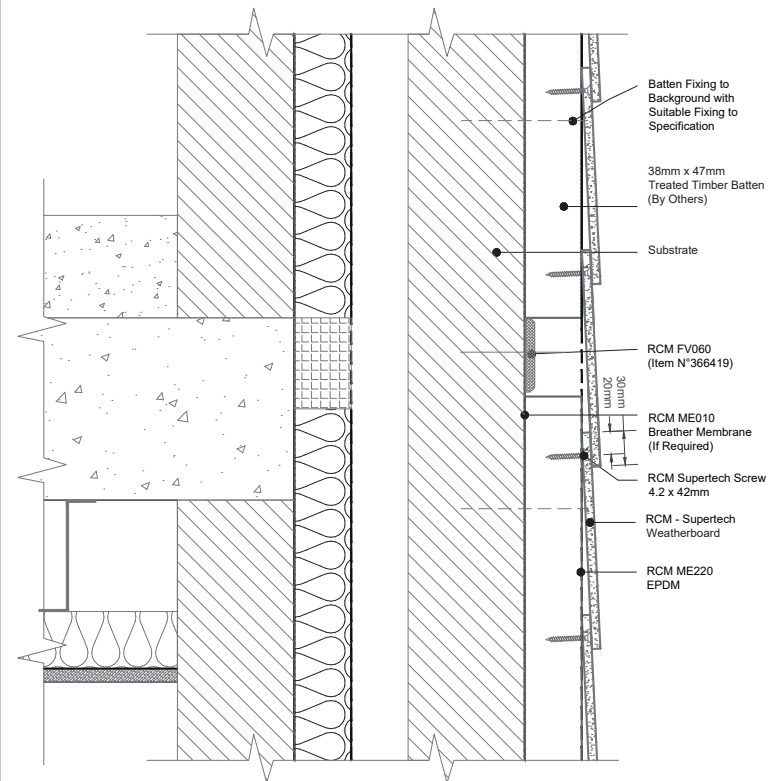
# Drawings - Non NHBC Timber Batten



	Unit 25 - 27 Rosevale Rd, Parkhouse Ind Est West, Newcastle-under-Lyme, Staffordshire, ST5 7EF. Telephone: 0800 612 4662 Email: info@rcmitd.biz	PROJECT: RCM	ISO No: 0000	DRAWN DM	REV	DATE	NOTE	BY
	DRAWING ID: PROJ020-0004	CHECKED JB	001	15/04/20	Final Release			DM
DESCRIPTION: Timber Batten Non NHBC Supertech - To brick interface		DATE: 09/04/20						

All performance data & system specifications are for systems constructed with materials & components as shown. The inclusion or substitution of any other manufacturer's materials or components invalidates both test data, system performance and compliance with CDM 2015. The information is provided for guidance only and does not constitute a contract. It is intended to be used as a guide only and is not intended to be used as a contract. It is intended to be used as a guide only and is not intended to be used as a contract. It is intended to be used as a guide only and is not intended to be used as a contract.

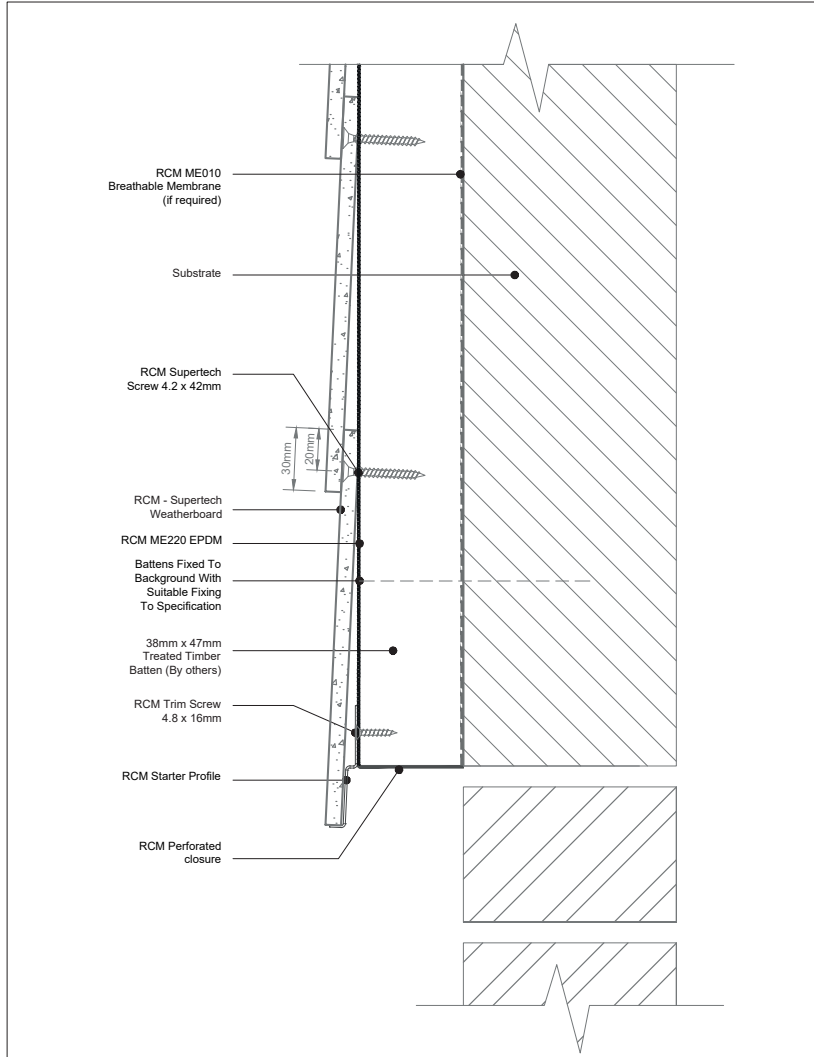
Note:  
RCM FV060  
fixed in accordance with  
Manufactures Recommendation



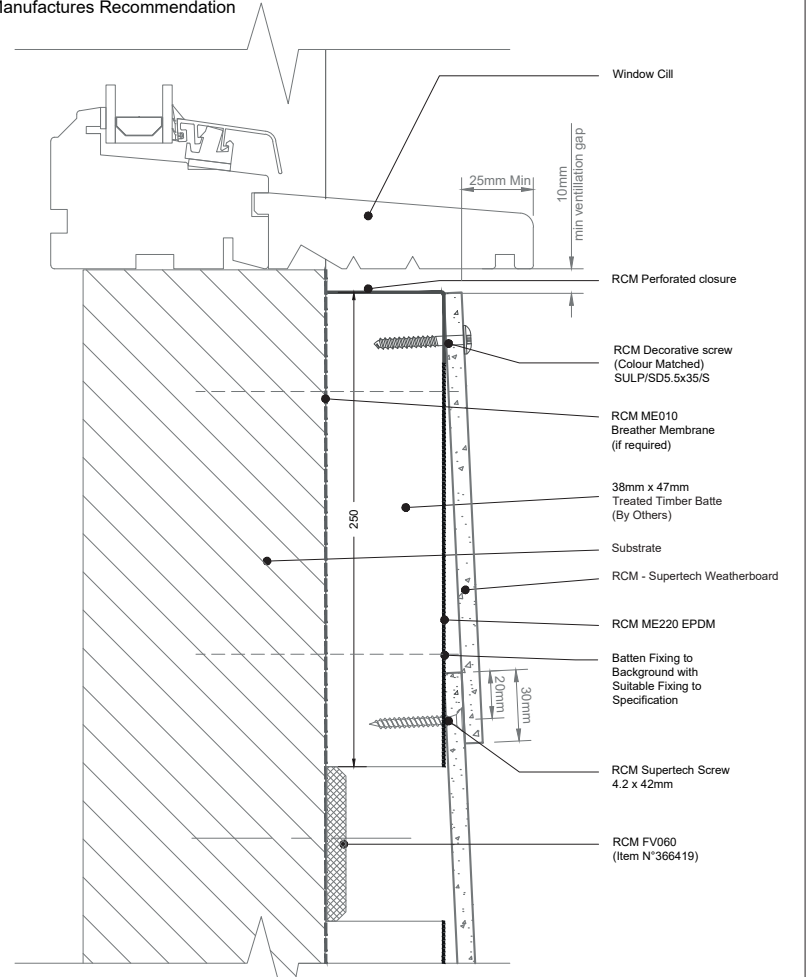
	Unit 25 - 27 Rosevale Rd, Parkhouse Ind Est West, Newcastle-under-Lyme, Staffordshire, ST5 7EF. Telephone: 0800 612 4662 Email: info@rcmitd.biz	PROJECT: RCM	ISO No: 0000	DRAWN DM	REV	DATE	NOTE	BY
	DRAWING ID: PROJ020-0009	CHECKED JB	001	15/04/20	Final Release			DM
DESCRIPTION: Timber Batten Non NHBC Apartment Separating Floor		DATE: 09/04/20						

All performance data & system specifications are for systems constructed with materials & components as shown. The inclusion or substitution of any other manufacturer's materials or components invalidates both test data, system performance and compliance with CDM 2015. The information is provided for guidance only and does not constitute a contract. It is intended to be used as a guide only and is not intended to be used as a contract. It is intended to be used as a guide only and is not intended to be used as a contract. It is intended to be used as a guide only and is not intended to be used as a contract.

# Drawings - Non NHBC Timber Batten



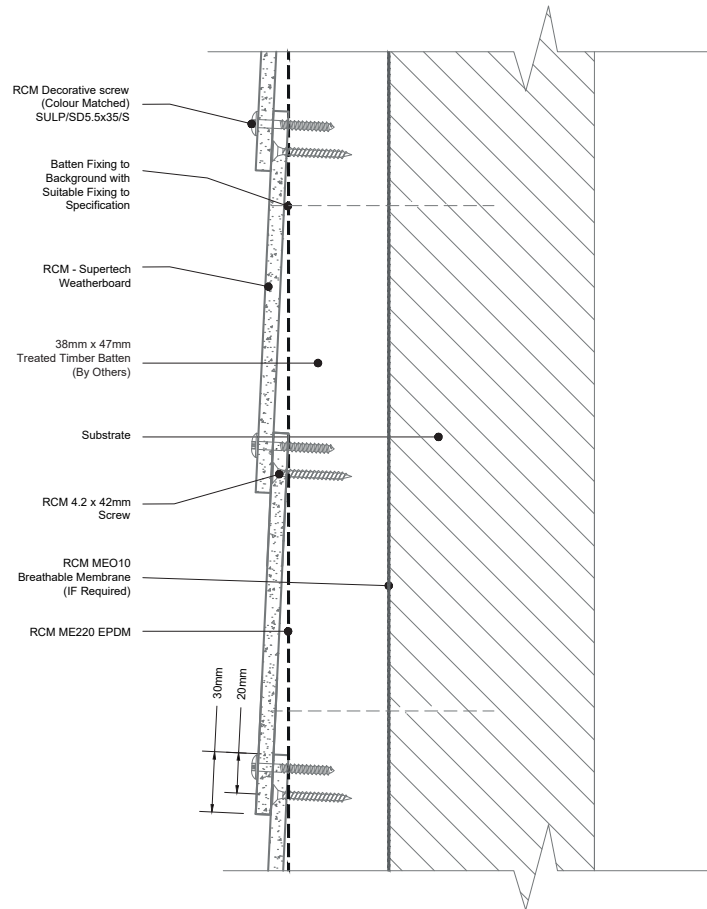
**Note:**  
 RCM FV060  
 fixed in accordance with  
 Manufactures Recommendation



	Unit 25 - 27 Rosevale Rd, Parkhouse Ind Est West, Newcastle-under-Lyme, Staffordshire, ST15 7EF, Telephone: 0800 612 4662 Email: info@rcmtd.biz	PROJECT: RCM	ISO No: 0000	DRAWN DM	REV 001	DATE 15/04/21	NOTE First Release	BY DM
		DRAWING ID: PROJ020-0001		CHECK JB	DATE 09/04/21			
		DESCRIPTION: Timber Batten Non NHBC Supertech - Base/Starter						

	Unit 25 - 27 Rosevale Rd, Parkhouse Ind Est West, Newcastle-under-Lyme, Staffordshire, ST15 7EF, Telephone: 0800 612 4662 Email: info@rcmtd.biz	PROJECT: RCM	ISO No: 0000	DRAWN DM	REV 001	DATE 15/04/21	NOTE First Release	BY DM
		DRAWING ID: PROJ020-0006		CHECK JB	DATE 09/04/21			
		DESCRIPTION: Timber Batten Non NHBC Supertech - Window Cill						

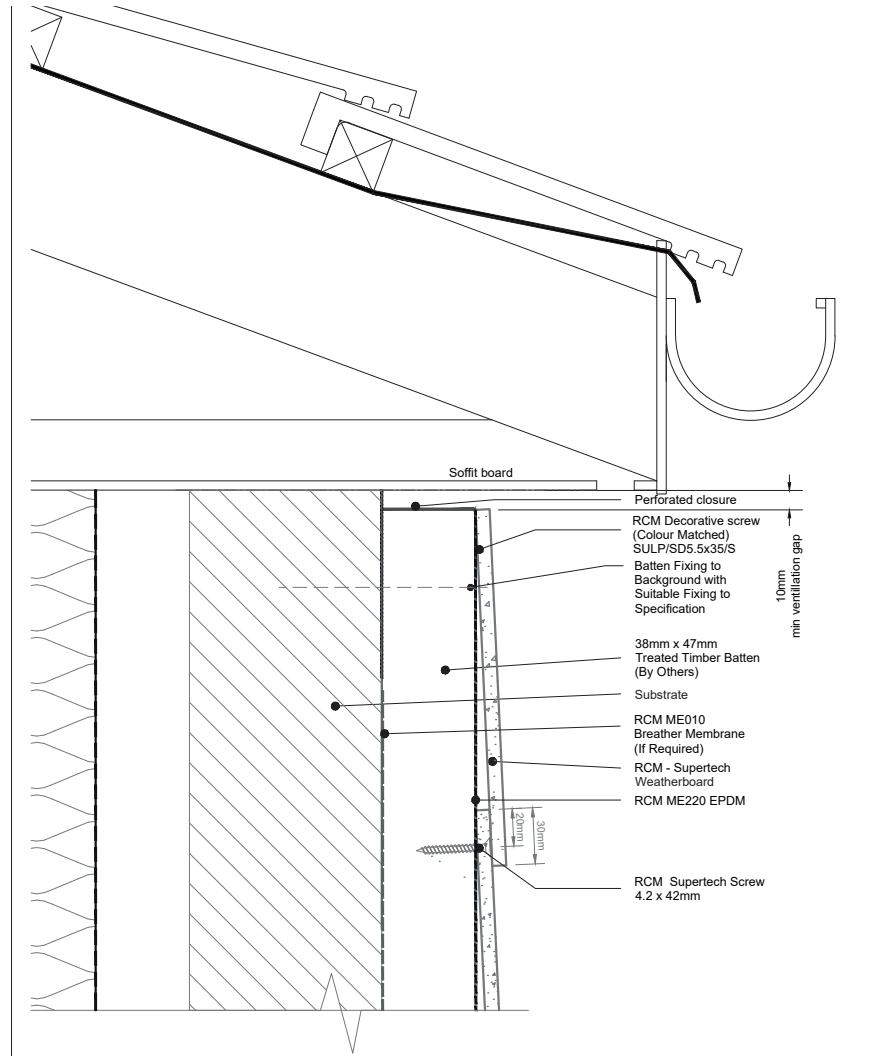
# Drawings - Non NHBC Timber Batten



Note:  
Use Stainless Steel Fixings  
In Coastal Areas

	Unit 25 - 27 Rosevale Rd, Parkhouse Ind Est West, Newcastle-under-Lyme, Staffordshire, ST5 7EF, Telephone: 0800 612 4662 Email: info@rcmtd.biz	PROJECT: RCM	ISO No: 0000	DRAWN DM	REV	DATE	NOTE	BY
		DRAWING ID: PROJ020-0007		CHECK JB	001	10/04/21	First Release	D.M
		DESCRIPTION: Timber Batten Non NHBC Supertech - Coastal Or High Wind Areas		ASSENTS				
				DATE				

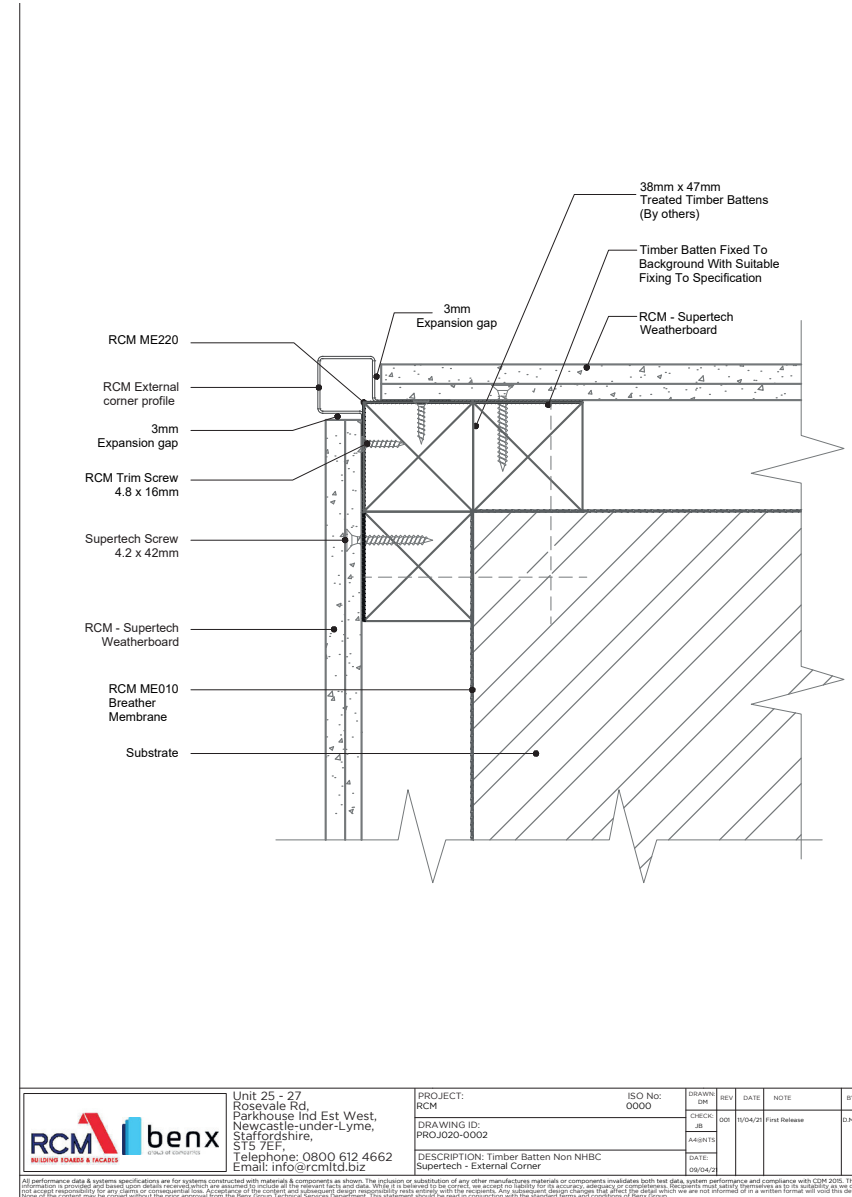
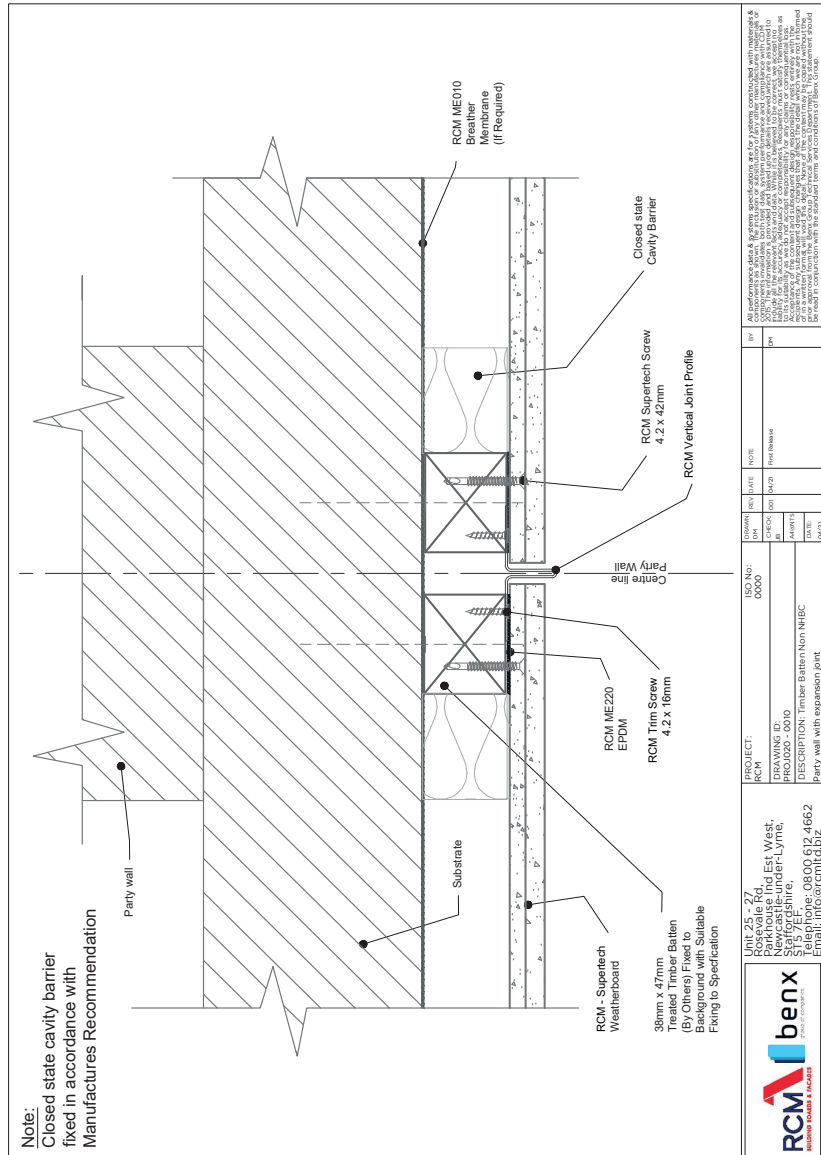
All performance data & systems specifications are for systems constructed with materials & components as shown. The inclusion or substitution of any other manufacturer materials or components invalidates both test data, system performance and compliance with CDM 2015. The information provided and based upon details as approved by the relevant local authority. While it is believed to be correct, we accept no liability for the accuracy, adequacy or completeness. Designers must verify the suitability of the details as they are not responsible for any claims or consequential loss. Acceptance of the content and subsequent design responsibility rests entirely with the recipient. Any subsequent design changes that affect the detail which we are not informed of in a written format will void this detail. None of the content may be copied without the prior approval from the Benx Group, technical services department. This statement should be read in conjunction with the standard terms and conditions of Benx Group.



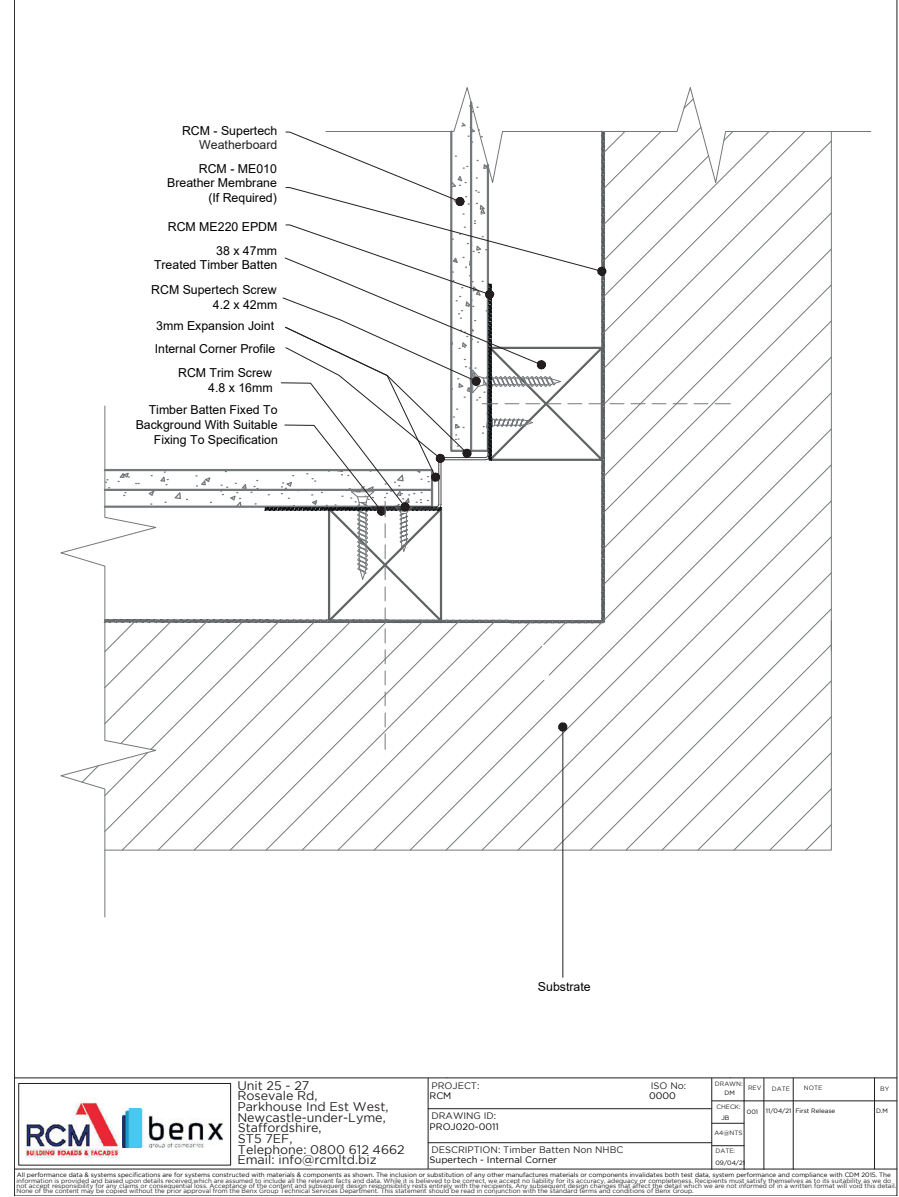
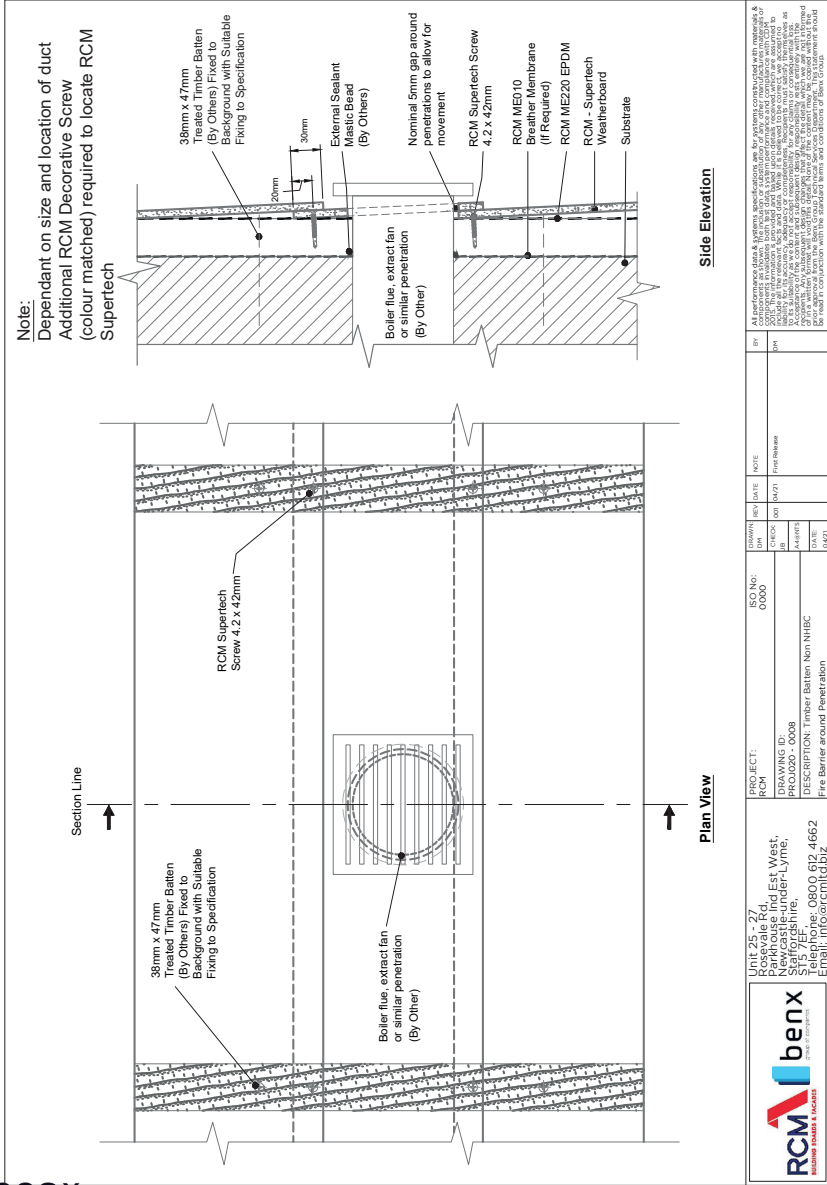
	Unit 25 - 27 Rosevale Rd, Parkhouse Ind Est West, Newcastle-under-Lyme, Staffordshire, ST5 7EF, Telephone: 0800 612 4662 Email: info@rcmtd.biz	PROJECT: RCM	ISO No: 0000	DRAWN DM	REV	DATE	NOTE	BY
		DRAWING ID: PROJ020-0007		CHECK JB	001	10/04/21	First Release	D.M
		DESCRIPTION: Timber Batten Non NHBC Supertech - Eaves		ASSENTS				
				DATE				

All performance data & systems specifications are for systems constructed with materials & components as shown. The inclusion or substitution of any other manufacturer materials or components invalidates both test data, system performance and compliance with CDM 2015. The information provided and based upon details as approved by the relevant local authority. While it is believed to be correct, we accept no liability for the accuracy, adequacy or completeness. Designers must verify the suitability of the details as they are not responsible for any claims or consequential loss. Acceptance of the content and subsequent design responsibility rests entirely with the recipient. Any subsequent design changes that affect the detail which we are not informed of in a written format will void this detail. None of the content may be copied without the prior approval from the Benx Group, technical services department. This statement should be read in conjunction with the standard terms and conditions of Benx Group.

# Drawings - Non NHBC Timber Batten



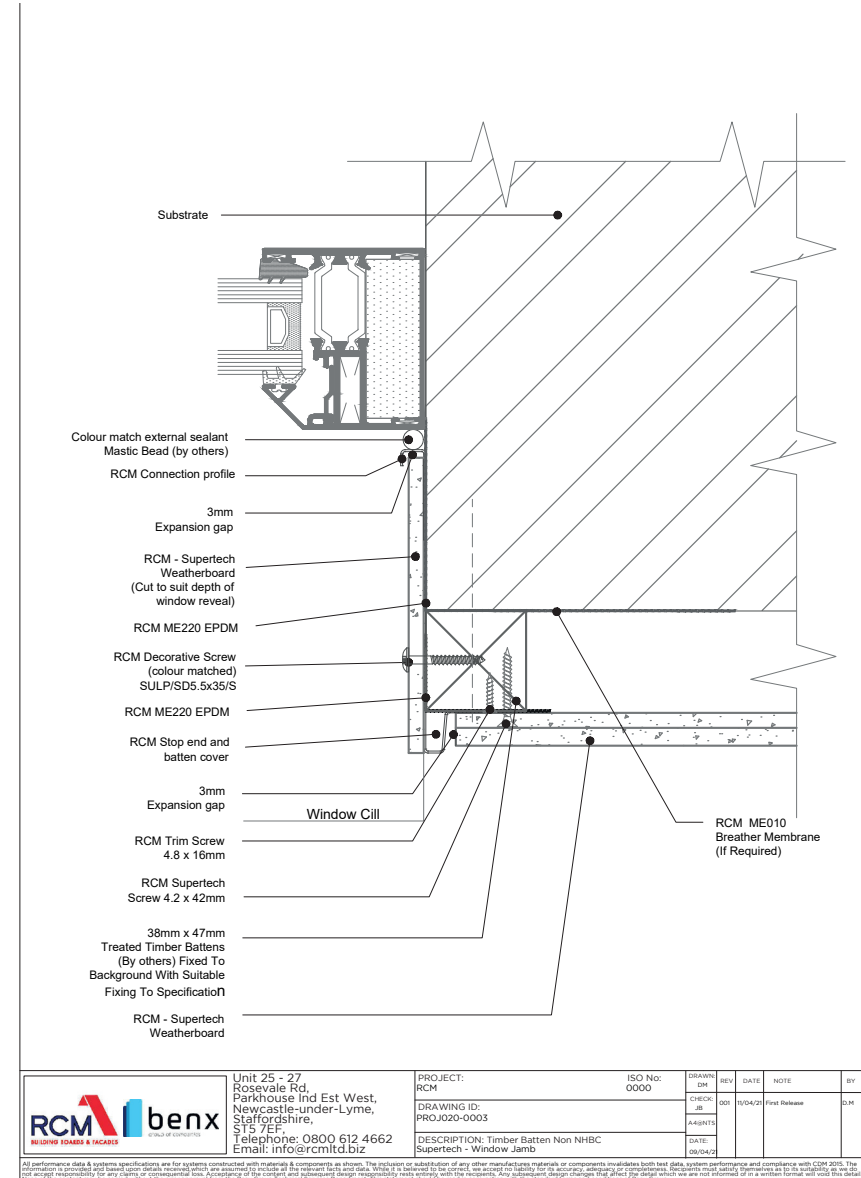
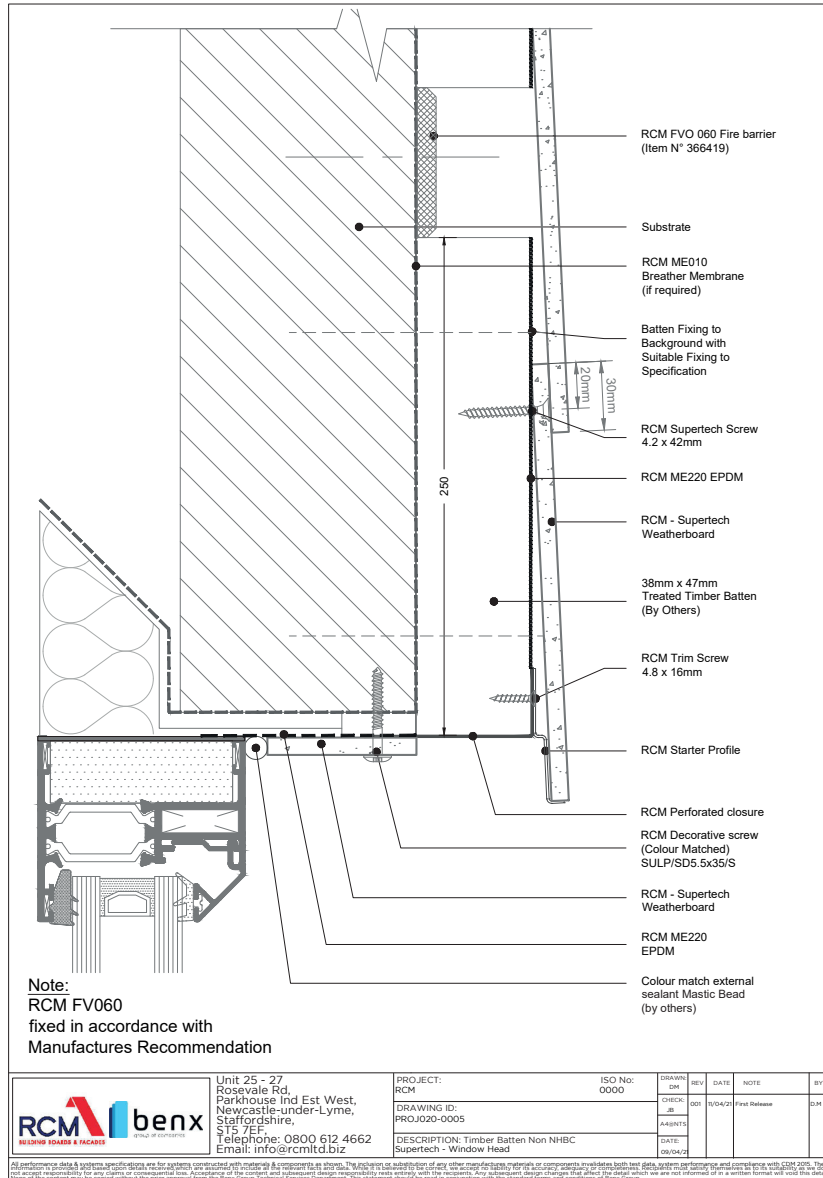
# Drawings - Non NHBC Timber Batten



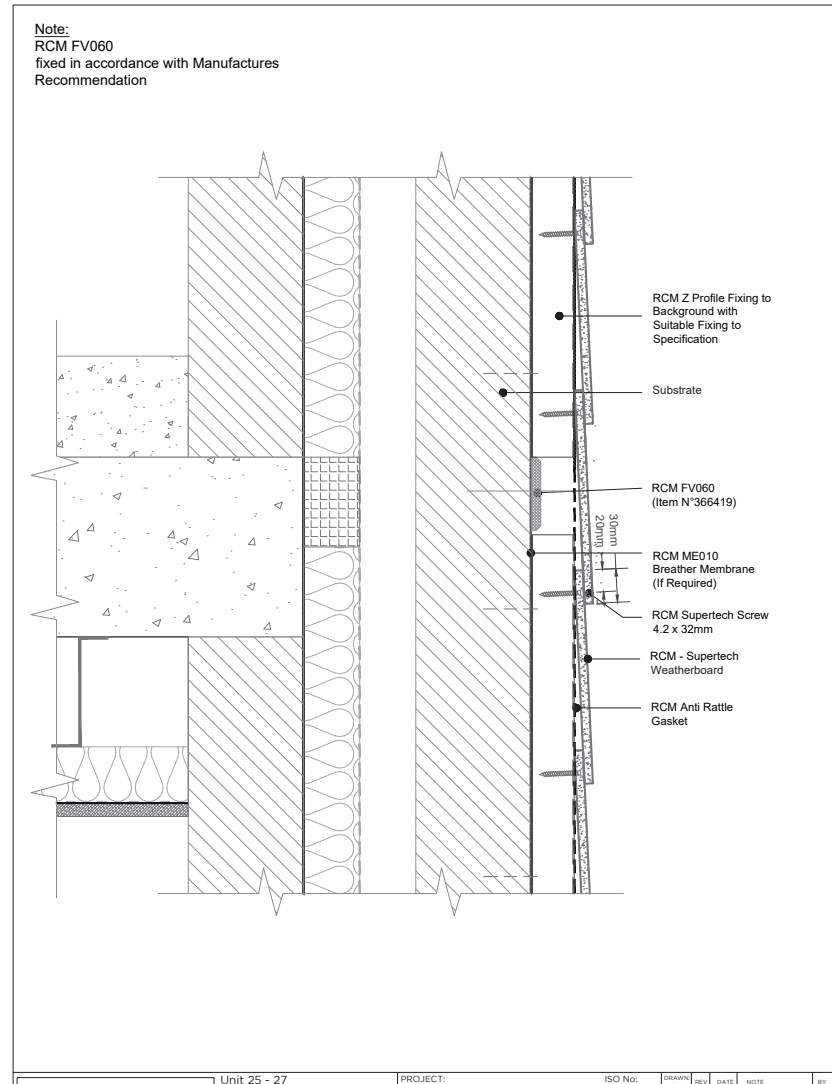
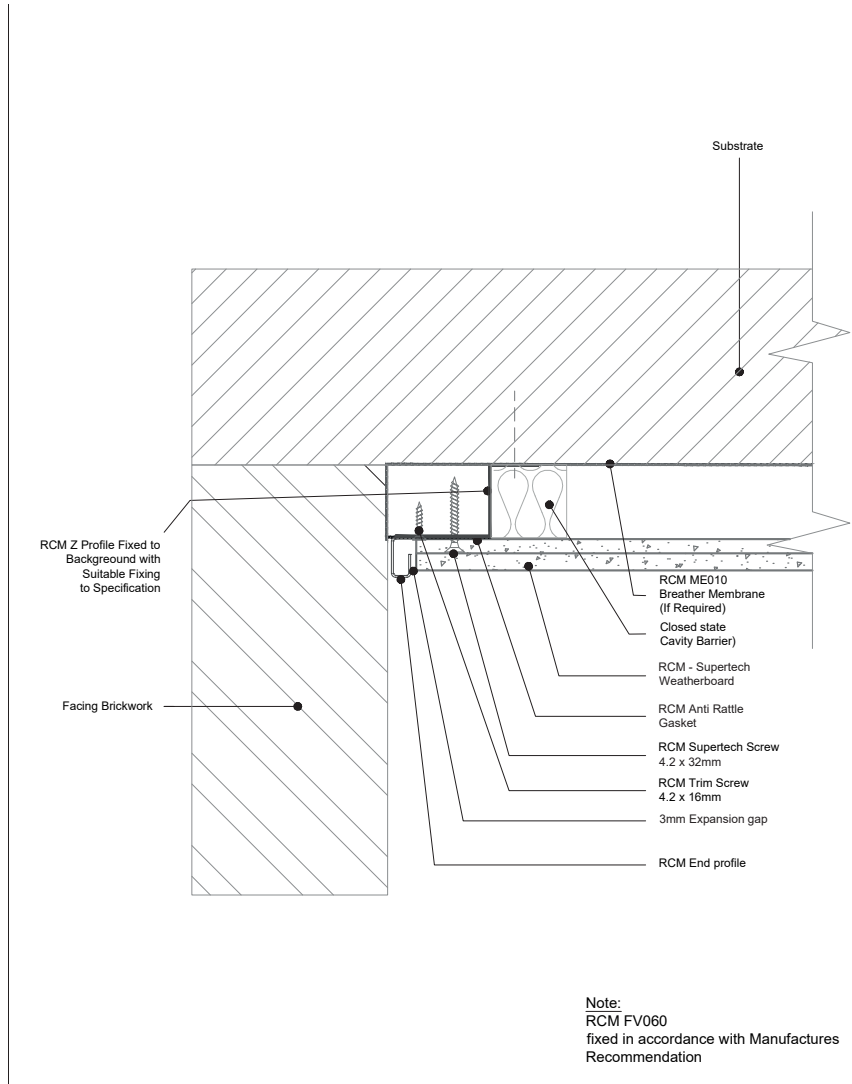
All performance data & systems specifications are for systems constructed with materials & components as shown. The inclusion or substitution of any other manufacturer's materials or components invalidates both test data, system performance and compliance with CDM 2015. The information provided and based upon data received which we assume to be correct. We do not accept responsibility for any claims or consequential loss. Acceptance of the contract and subsequent design responsibility rests entirely with the recipient. Any subsequent design changes that affect the design which we are not informed of in a written format will void the data. None of the content may be copied without the prior approval from the benx group technical services department. This statement should be read in conjunction with the standard terms and conditions of benx group.



# Drawings - Non NHBC Timber Batten



# Drawings - NHBC Z Profile



	Unit 25 - 27 Rosevale Rd, Parkhouse Ind Est West, Newcastle-under-Lyme, Staffordshire, ST5 7EF Telephone: 0800 612 4662 Email: info@rcmltd.biz	PROJECT: RCM	ISO No: 0000	DRAWN: DM	REV: 001	DATE: 15/04/21	NOTE: First Release	BY: DM
	DRAWING ID: PROJ020-0004	DESCRIPTION: RCM Z Profile NHBC Recommendation	DATE: 20/04/21					

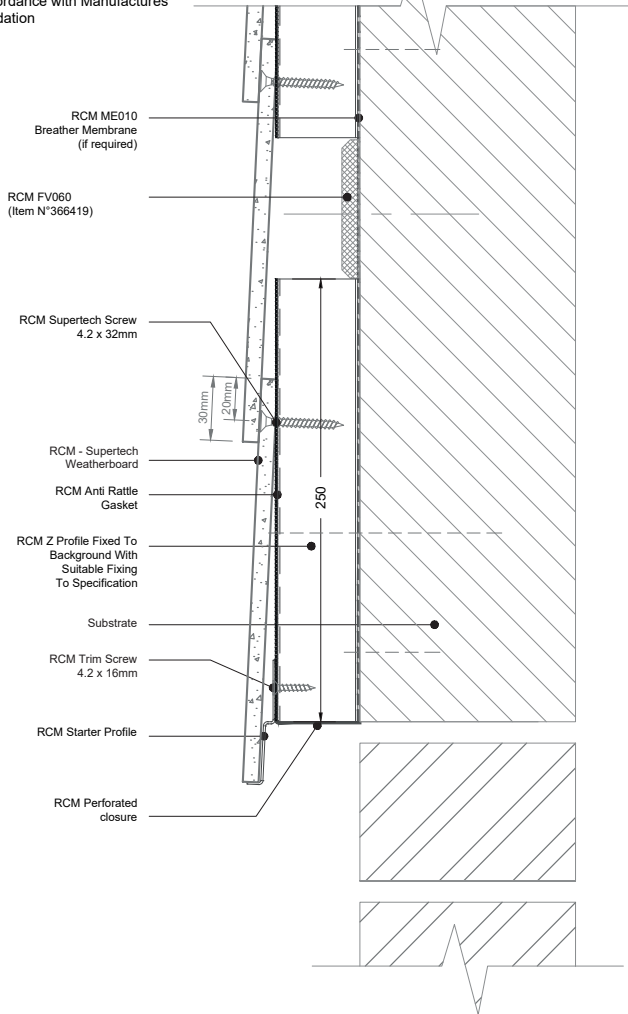
	Unit 25 - 27 Rosevale Rd, Parkhouse Ind Est West, Newcastle-under-Lyme, Staffordshire, ST5 7EF, Telephone: 0800 612 4662 Email: info@rcmltd.biz	PROJECT: RCM	ISO NO: 0000	DRAWN: DM	REV: 001	DATE: 15/04/21	NOTE: First Release	BY: DM
	DRAWING ID: PROJ020-0009	DESCRIPTION: RCM Z Profile NHBC Recommendation Apartment Separating Floor	DATE: 20/04/21					

All performance data & systems specifications are for systems constructed with materials & components as shown. The inclusion or substitution of any other manufacture materials or components invalidates both test data, system performance and compliance with CDM 2015. This disclaimer is provided and based upon details received which are assumed to comply with the requirements of the relevant parts of the code. Where it is deemed to be correct, we accept no liability for its accuracy, adequacy or compliance. Designers must satisfy themselves as to its suitability as well as their own responsibility for any claims or consequential loss. Acceptance of the content and subsequent design responsibility rests entirely with the recipient. Any subsequent design changes that affect the design which we are not informed of in a written format will void this detail. None of the content may be copied without the prior approval from the Benx Group Technical Services Department. This statement should be read in conjunction with the standard terms and conditions of Benx Group.

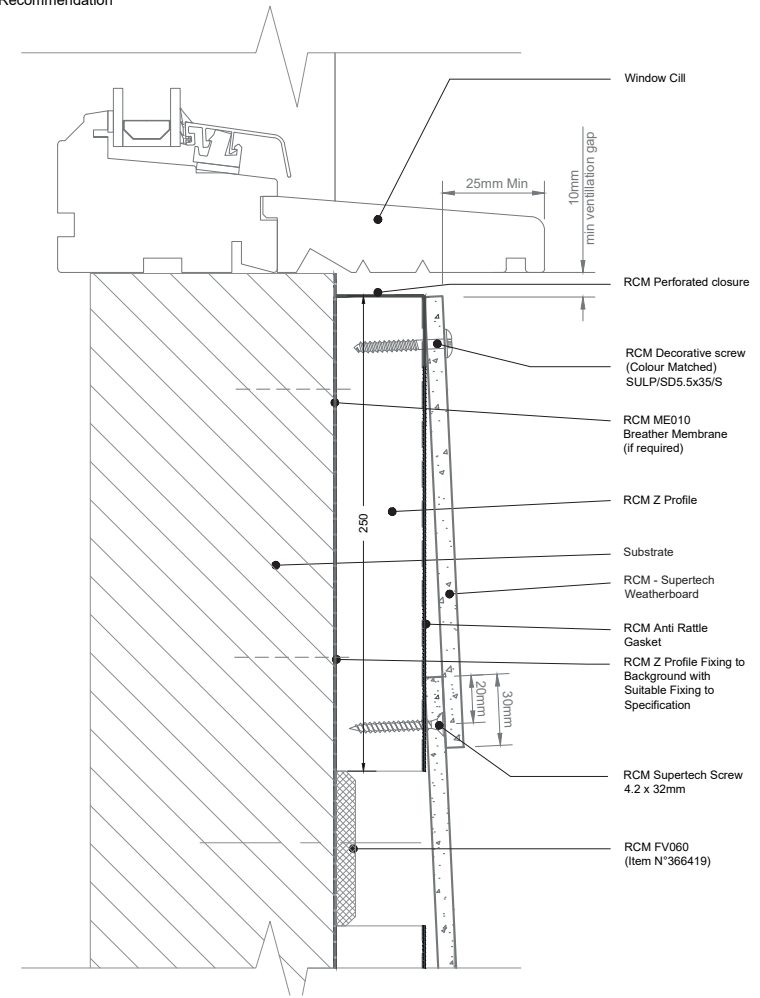
All performance data & systems specifications are for systems constructed with materials & components as shown. The inclusion or substitution of any other manufacture materials or components invalidates both test data, system performance and compliance with CDM 2015. This disclaimer is provided and based upon details received which are assumed to comply with the requirements of the relevant parts of the code. Where it is deemed to be correct, we accept no liability for its accuracy, adequacy or compliance. Designers must satisfy themselves as to its suitability as well as their own responsibility for any claims or consequential loss. Acceptance of the content and subsequent design responsibility rests entirely with the recipient. Any subsequent design changes that affect the design which we are not informed of in a written format will void this detail. None of the content may be copied without the prior approval from the Benx Group Technical Services Department. This statement should be read in conjunction with the standard terms and conditions of Benx Group.

# Drawings - NHBC Z Profile

Note:  
RCM FV060  
fixed in accordance with Manufactures  
Recommendation



Note:  
RCM FV060  
fixed in accordance with Manufactures  
Recommendation



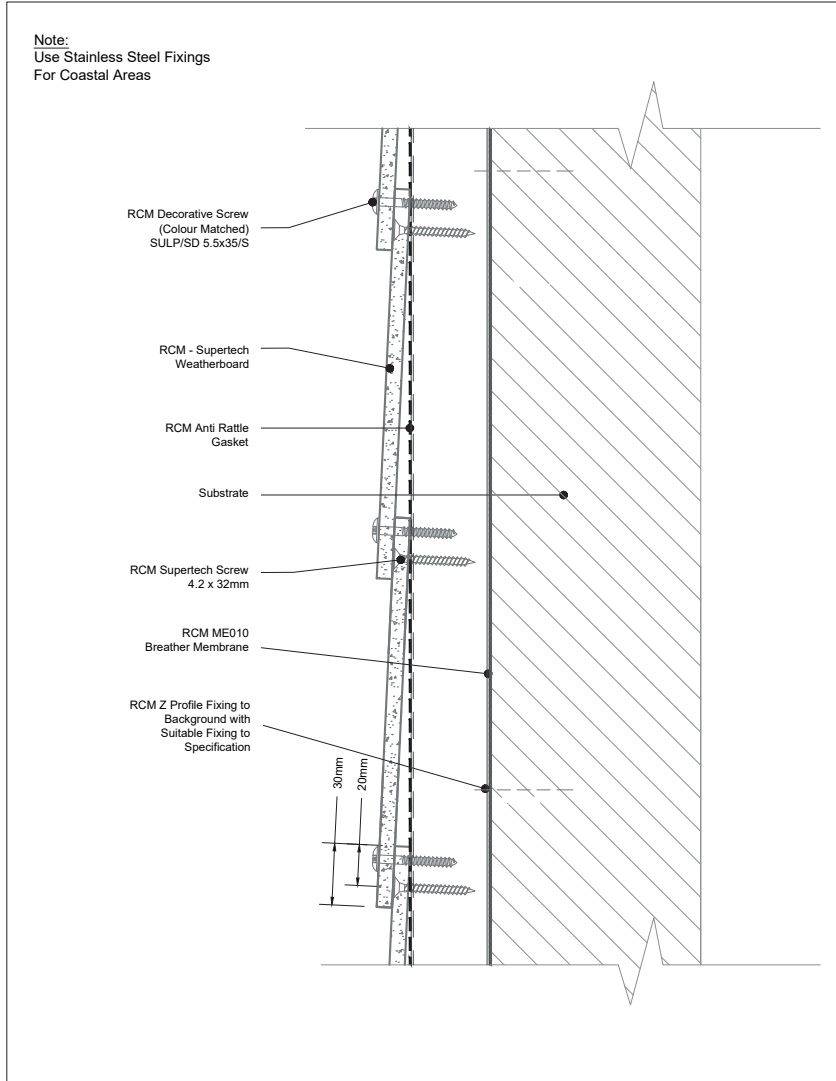
	Unit 25 - 27 Rosevale Rd, Parkhouse Ind Est West, Newcastle-under-Lyme, Staffordshire, ST5 7EF. Telephone: 0800 612 4662 Email: info@rcmtd.biz	PROJECT:	ISO No:	DRAWN	REV	DATE	NOTE	BY
		RCM	0000	DM				
		DRAWING ID:		CHECK	JOB	15/04/20	Final Release	DM
		PROJ:020-0001		APPINTS				
		DESCRIPTION: RCM Z Profile NHBC Recommendation		DATE:				
		Supertech - Base/Starter		08/04/20				

All performance data & systems specifications are for systems constructed with materials & components as shown. The inclusion or substitution of any other manufacturers materials or components invalidates both test data, system performance and compliance with CDM 2015. The information is provided and issued upon details received and which are assumed to be correct for the relevant facts and data. While it is believed to be correct, we accept no liability for its accuracy, adequacy or completeness. Requests must clearly reference us by the suitability as we do not accept responsibility for any claims or consequential loss. Accuracy of the content and subsequent design responsibility rests entirely with the recipient. Any subsequent design changes that affect the detail which we are not informed of in a written format will void this detail. None of the content may be subject without the prior agreement from the Issue Control, Technical Services Department. This statement should be read in conjunction with the standard terms and conditions of terms sheets.

	Unit 25 - 27 Rosevale Rd, Parkhouse Ind Est West, Newcastle-under-Lyme, Staffordshire, ST5 7EF. Telephone: 0800 612 4662 Email: info@rcmtd.biz	PROJECT:	ISO No:	DRAWN	REV	DATE	NOTE	BY
		RCM	0000	DM				
		DRAWING ID:		CHECK	JOB	15/04/20	Final Release	DM
		PROJ:020-0006		APPINTS				
		DESCRIPTION: RCM Z Profile NHBC Recommendation		DATE:				
		Supertech - Window Cill		08/04/20				

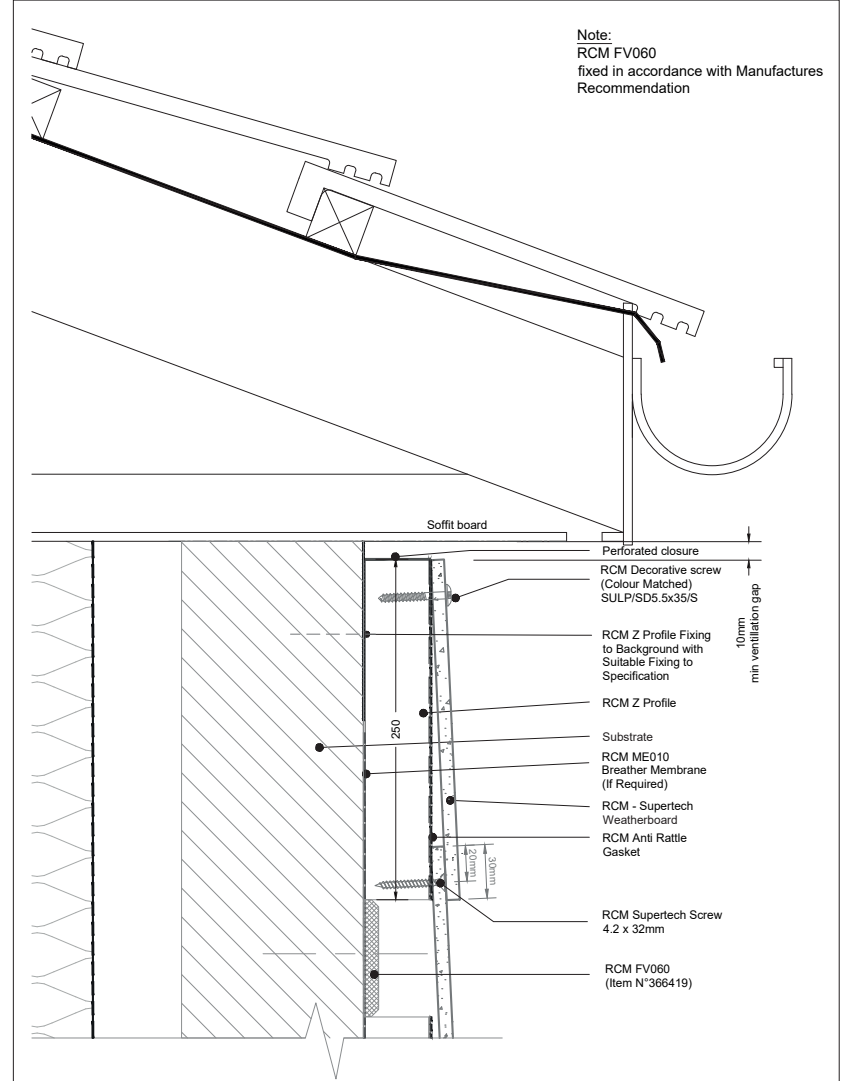
All performance data & systems specifications are for systems constructed with materials & components as shown. The inclusion or substitution of any other manufacturers materials or components invalidates both test data, system performance and compliance with CDM 2015. The information is provided and issued upon details received and which are assumed to be correct for the relevant facts and data. While it is believed to be correct, we accept no liability for its accuracy, adequacy or completeness. Requests must clearly reference us by the suitability as we do not accept responsibility for any claims or consequential loss. Accuracy of the content and subsequent design responsibility rests entirely with the recipient. Any subsequent design changes that affect the detail which we are not informed of in a written format will void this detail. None of the content may be subject without the prior agreement from the Issue Control, Technical Services Department. This statement should be read in conjunction with the standard terms and conditions of terms sheets.

# Drawings - NHBC Z Profile



	Unit 25 - 27 Rosevale Rd, Parkhouse Ind Est West, Newcastle-under-Lyme, Staffordshire, ST15 7EF. Telephone: 0800 612 4662 Email: info@rcmtd.biz	PROJECT: RCM	ISO No: 0000	DRAWN DM	REV	DATE	NOTE	BY
		DRAWING ID: PROJ020-0012	CHECKED JH	001	10/04/21	First Release		
DESCRIPTION: RCM Z Profile NHBC Recommendation Supertech - Coastal Or High Wind Areas		DATE: 09/04/21						

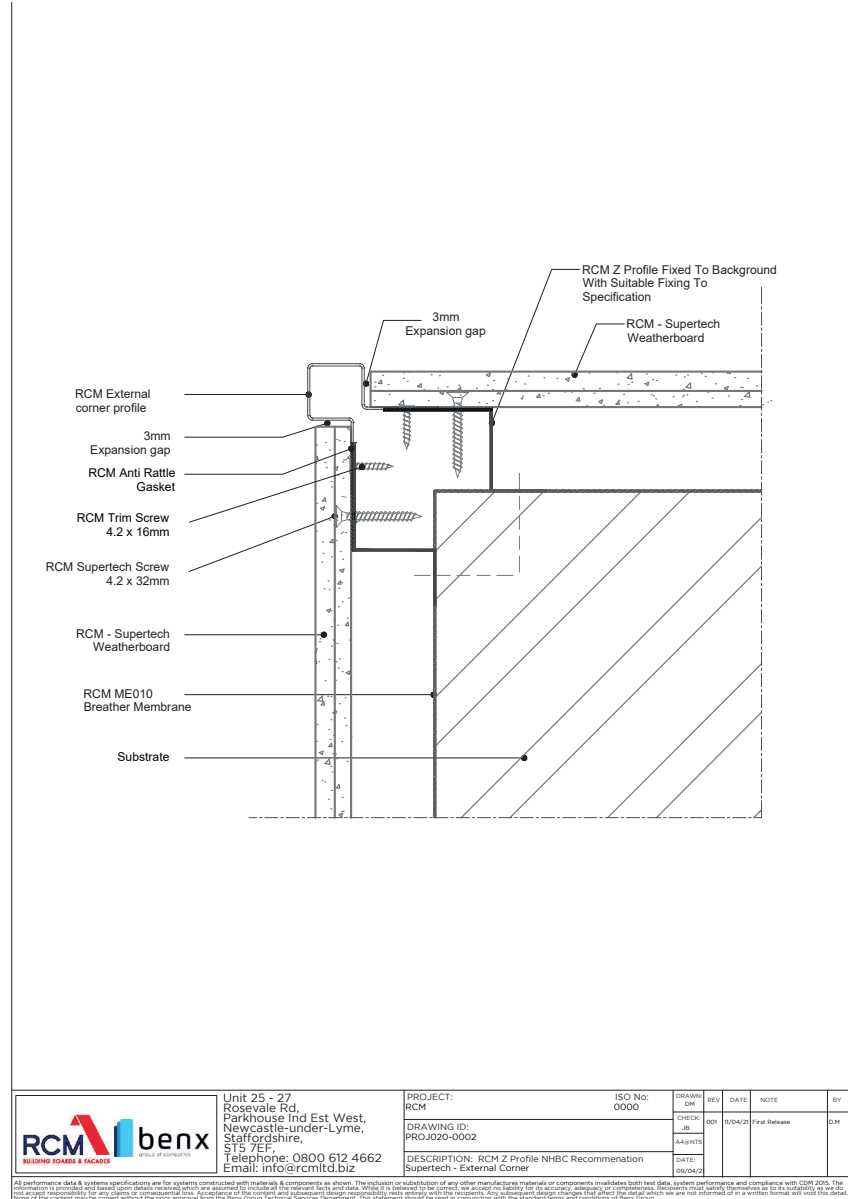
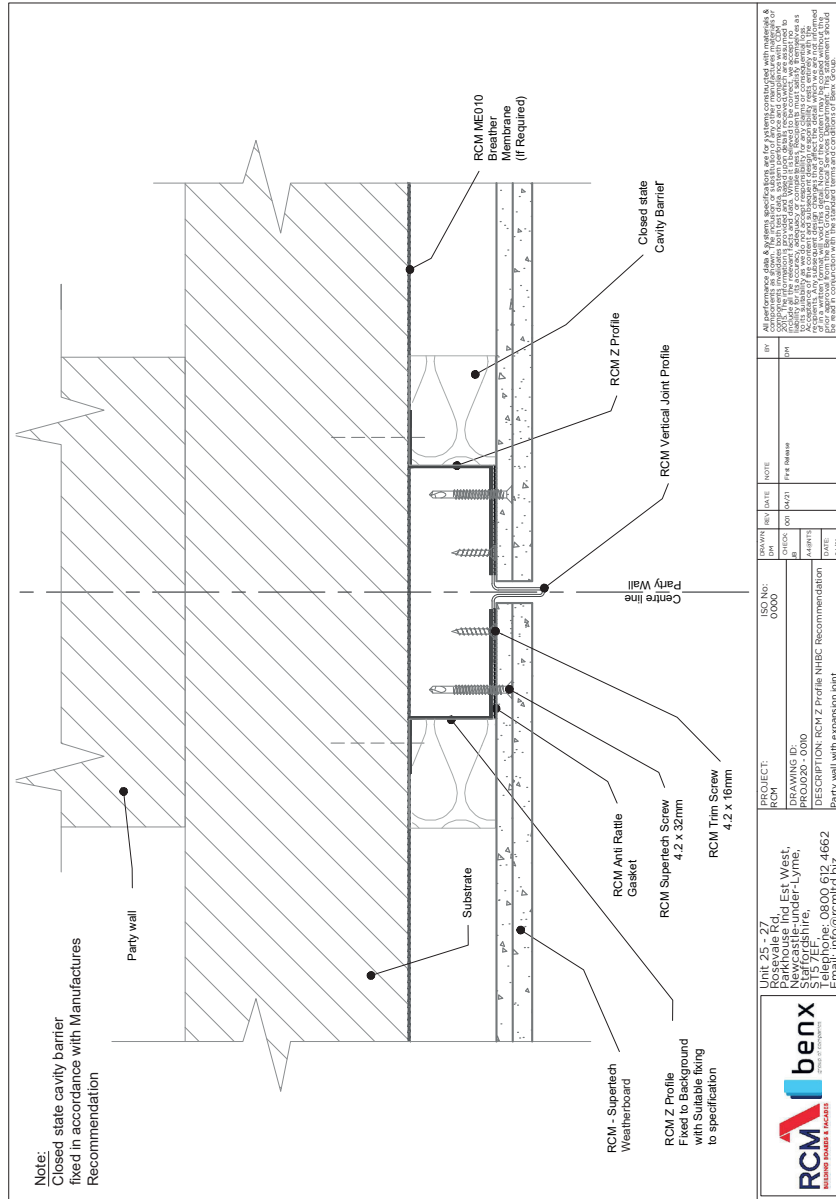
All performance data & system specifications are for systems constructed with materials & components as shown. The inclusion or substitution of any other manufacturers materials or components invalidates both test data, system performance and compliance with CEEM 2015. The manufacturer's products and system specifications are assumed to be accurate to the extent shown and are not intended to be used as a basis for liability for any damage or consequential loss. Acceptance of the contract and subsequent design responsibility rests entirely with the recipient and subsequent design changes that affect the design which we are not informed of in a written format will void the details of the system may be subject without the prior approval from the manufacturer without services, benefits. This statement should be read in conjunction with the standard terms and conditions of sale.



	Unit 25 - 27 Rosevale Rd, Parkhouse Ind Est West, Newcastle-under-Lyme, Staffordshire, ST15 7EF. Telephone: 0800 612 4662 Email: info@rcmtd.biz	PROJECT: RCM	ISO No: 0000	DRAWN DM	REV	DATE	NOTE	BY
		DRAWING ID: PROJ020-0007	CHECKED JH	001	10/04/21	First Release		
DESCRIPTION: RCM Z Profile NHBC Recommendation Supertech - Eaves		DATE: 09/04/21						

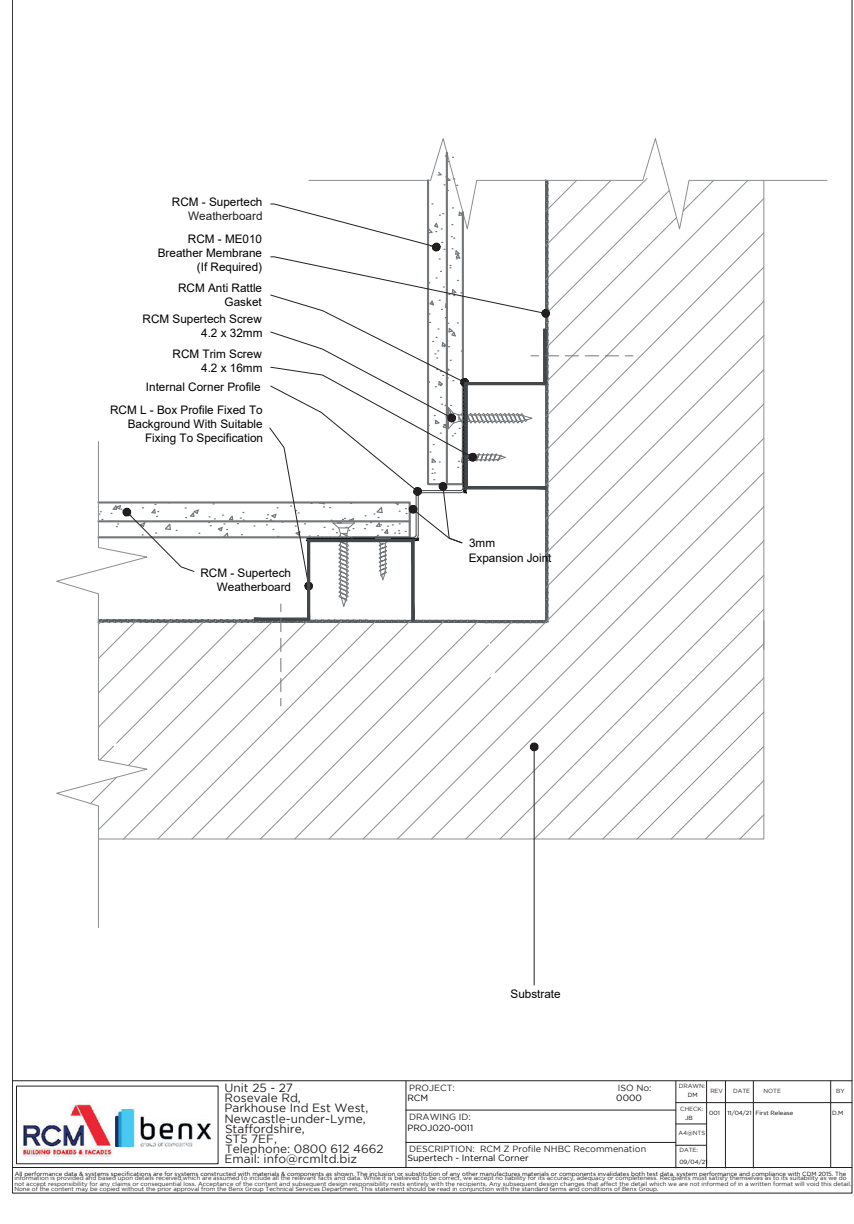
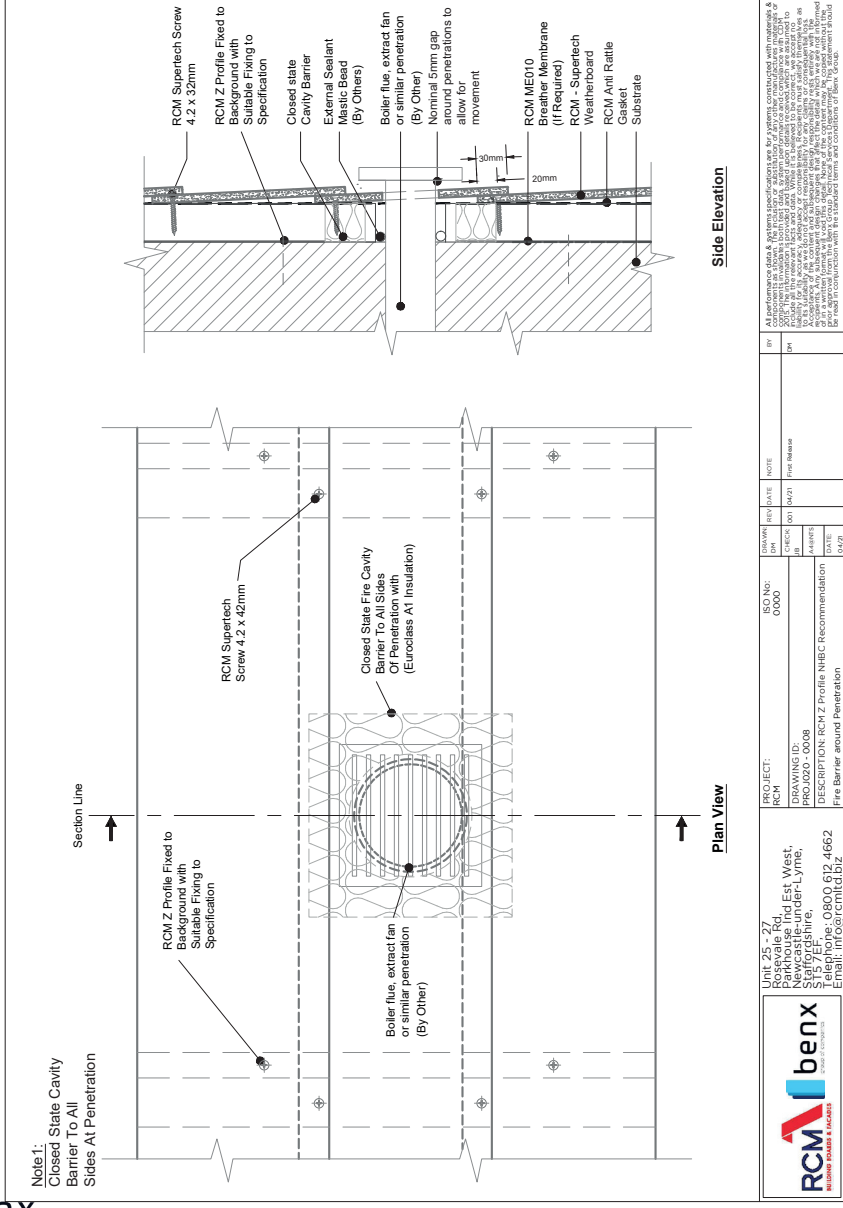
All performance data & system specifications are for systems constructed with materials & components as shown. The inclusion or substitution of any other manufacturers materials or components invalidates both test data, system performance and compliance with CEEM 2015. The manufacturer's products and system specifications are assumed to be accurate to the extent shown and are not intended to be used as a basis for liability for any damage or consequential loss. Acceptance of the contract and subsequent design responsibility rests entirely with the recipient and subsequent design changes that affect the design which we are not informed of in a written format will void the details of the system may be subject without the prior approval from the manufacturer without services, benefits. This statement should be read in conjunction with the standard terms and conditions of sale.

# Drawings - NHBC Z Profile

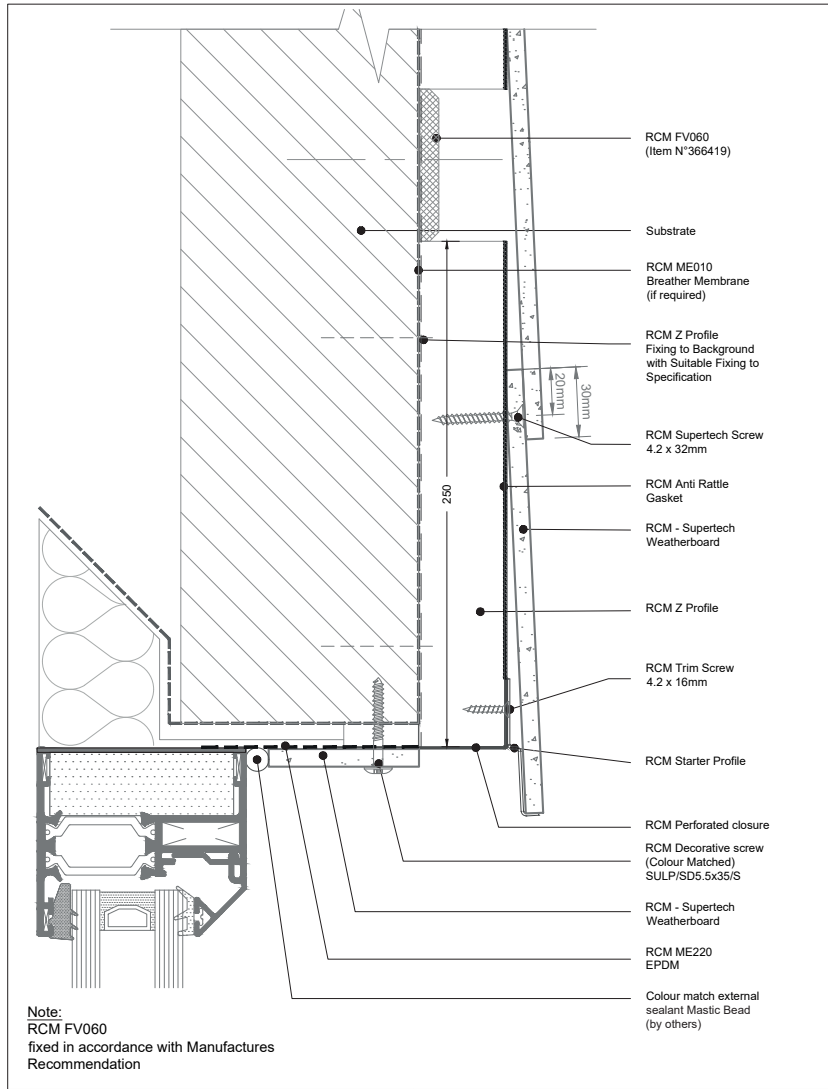


All performance data & system specifications are for systems constructed with materials & components as shown. The inclusion or substitution of any other materials or components invalidates both test data, system performance and compliance with CDM 2015. The inclusion or substitution of any other materials or components are approved in writing by the relevant test and data. Where a reference is made to a standard, we accept no liability for its accuracy, adequacy or completeness. Customers must satisfy themselves as to its suitability as we do not accept responsibility for any claims or consequential loss. Acceptance of the contract and subsequent design responsibility rests entirely with the recipient. Any subsequent design changes that affect the detail which we are not informed of in a written format will void the detail. None of the content may be copied without the prior approval from the Benx Group Technical Services Department. This statement should be read in conjunction with the standard terms and conditions of Benx Group.

# Drawings - NHBC Z Profile

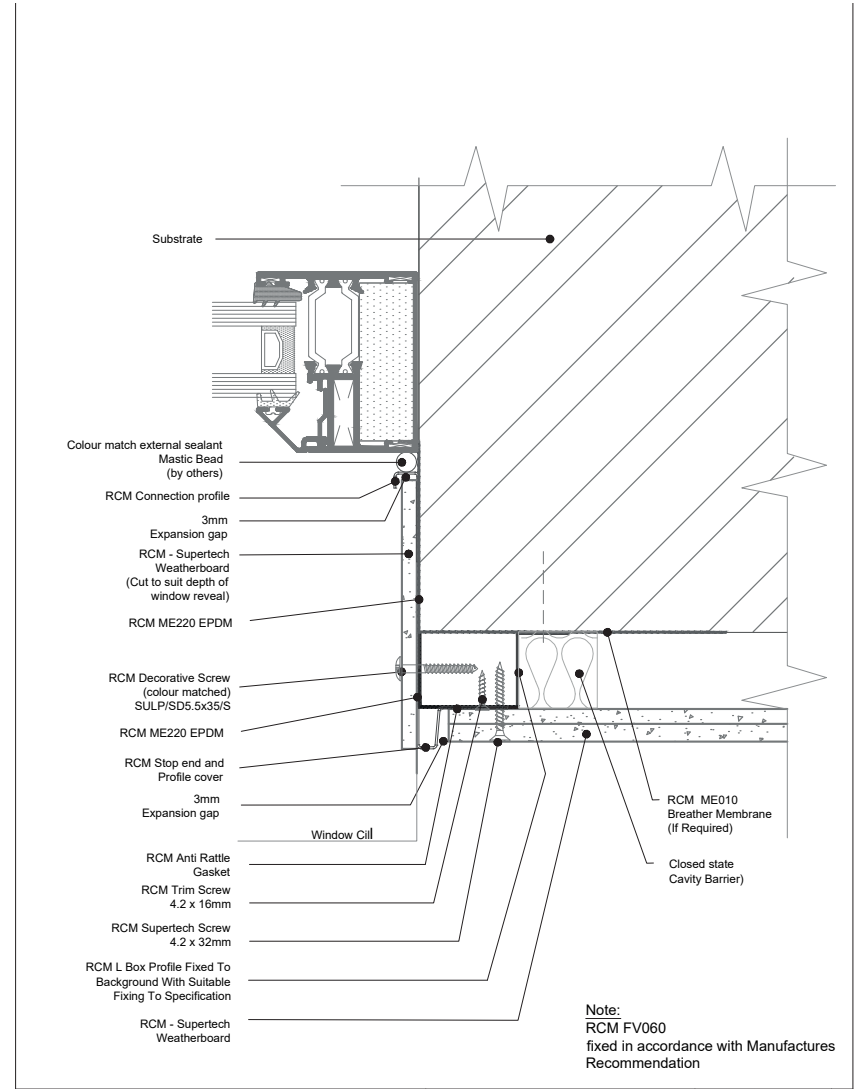


# Drawings - NHBC Z Profile



	Unit 25 - 27 Rosevale Rd, Parkhouse Ind Est West, Newcastle-under-Lyme, Staffordshire, ST5 7EF Telephone: 0800 612 4662 Email: info@rcmtd.biz	PROJECT: RCM	ISO No: 0000	DRAWN DM	REV	DATE	NOTE	BY
		DRAWING ID: PROJ020-0005	CHECKED DM	001	11/04/21	First Release	DM	
DESCRIPTION: RCM Z Profile NHBC Recommendation Supertech - Window Head								

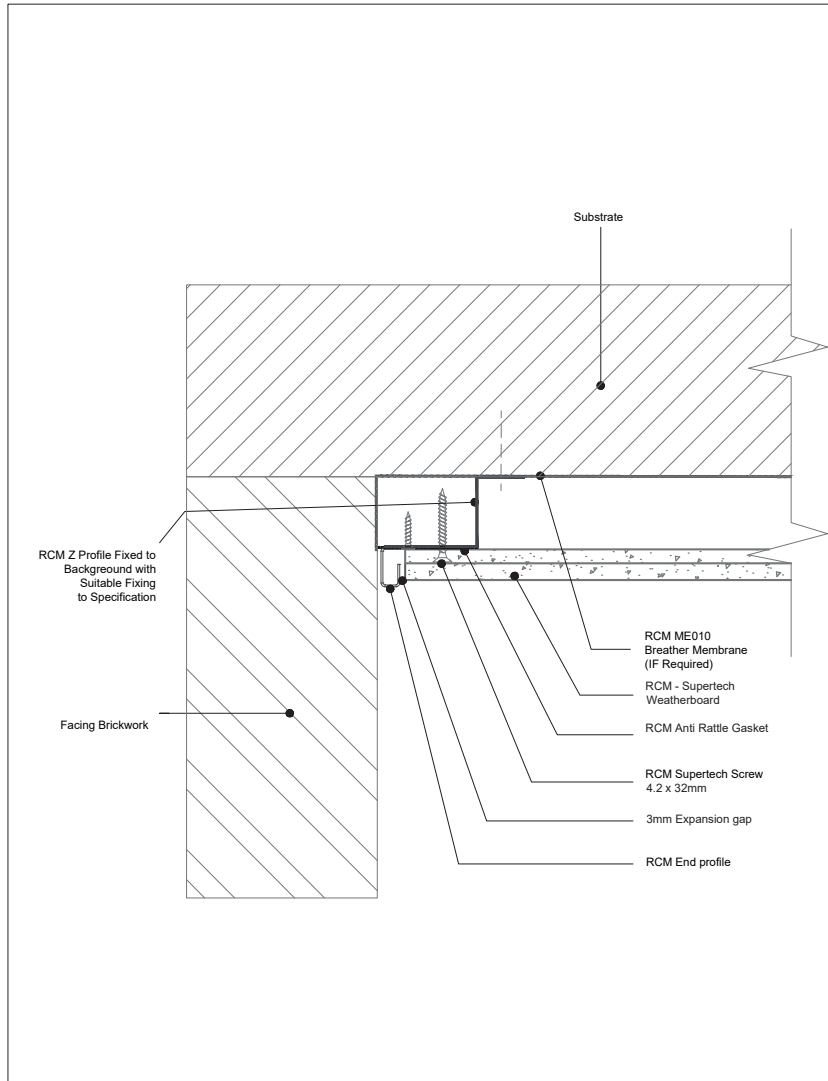
All performance data & systems specifications are for systems constructed with materials & components as shown. The inclusion or substitution of any other manufacturer materials or components invalidates both test data, system performance and compliance with CDM 2015. The information is provided for your information only and does not constitute an offer of insurance. It is intended to be used in conjunction with the standard terms and conditions of the relevant insurance policy. No liability is accepted for any loss or damage arising from the use of this information. The information is provided for your information only and does not constitute an offer of insurance. It is intended to be used in conjunction with the standard terms and conditions of the relevant insurance policy. No liability is accepted for any loss or damage arising from the use of this information.



	Unit 25 - 27 Rosevale Rd, Parkhouse Ind Est West, Newcastle-under-Lyme, Staffordshire, ST5 7EF Telephone: 0800 612 4662 Email: info@rcmtd.biz	PROJECT: RCM	ISO No: 0000	DRAWN DM	REV	DATE	NOTE	BY
		DRAWING ID: PROJ020-0003	CHECKED DM	001	11/04/21	First Release	DM	
DESCRIPTION: RCM Z Profile NHBC Recommendation Supertech - Window Jamb								

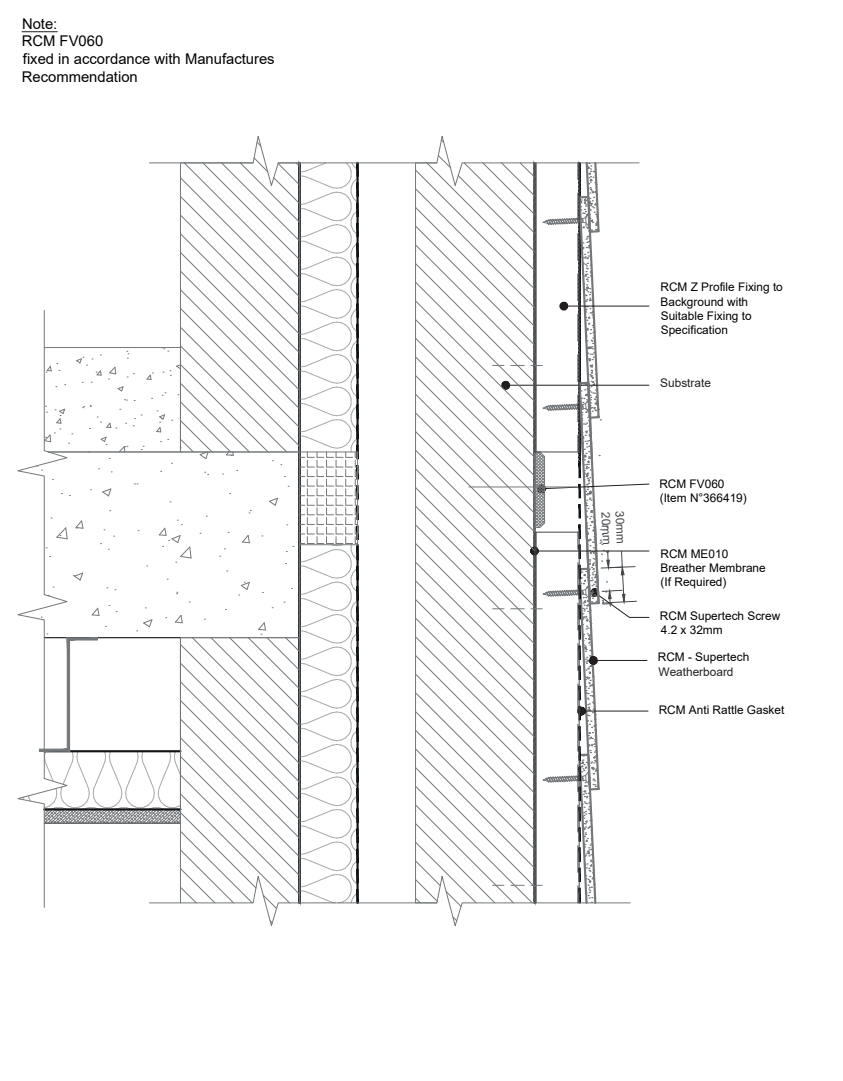
All performance data & systems specifications are for systems constructed with materials & components as shown. The inclusion or substitution of any other manufacturer materials or components invalidates both test data, system performance and compliance with CDM 2015. The information is provided for your information only and does not constitute an offer of insurance. It is intended to be used in conjunction with the standard terms and conditions of the relevant insurance policy. No liability is accepted for any loss or damage arising from the use of this information. The information is provided for your information only and does not constitute an offer of insurance. It is intended to be used in conjunction with the standard terms and conditions of the relevant insurance policy. No liability is accepted for any loss or damage arising from the use of this information.

# Drawings - Non NHBC Z Profile



	Unit 25 - 27 Rosevale Rd, Parkhouse Ind Est West, Newcastle-under-Lyme, Staffordshire, ST5 7EF Telephone: 0800 612 4662 Email: info@rcmtd.biz	PROJECT: RCM	ISO No: 0000	DRAWN DM	REV 001	DATE 11/04/21	NOTE First Release	BY DM
		DRAWING ID: PROJ020-0004	DESCRIPTION: RCM Z Profile Non NHBC Supertech - To brick interface	DATE 09/04/21				

All performance data & systems specifications are for systems constructed with materials & components as shown. The exclusion or substitution of any other manufacturer materials or components invalidates both test data, system performance and compliance with CDM 2015. The information is provided as a general guide only. It is not intended to be used as a substitute for professional design advice. It is the responsibility of the user to ensure that the system is installed in accordance with the manufacturer's instructions and to ensure that the system is installed in accordance with the manufacturer's instructions. No part of this document may be copied without the prior approval from the Benx Group Technical Services Department. This statement should be read in conjunction with the standard terms and conditions of Benx Group.

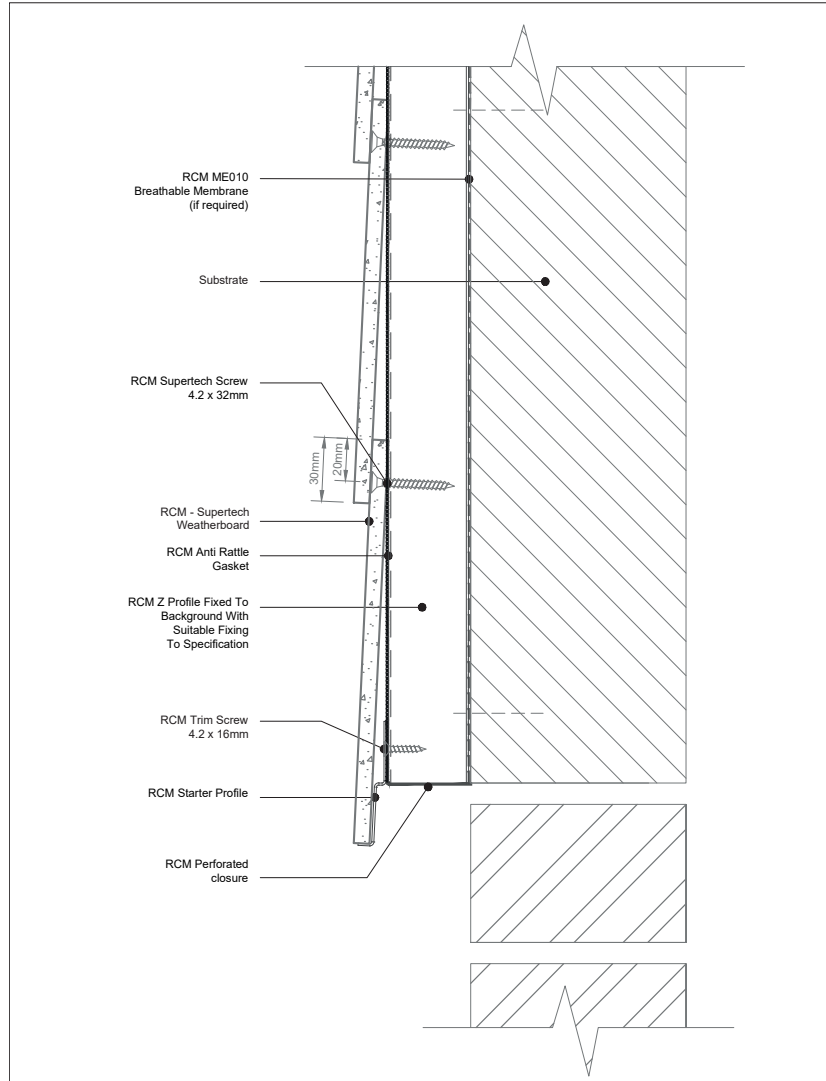


	Unit 25 - 27 Rosevale Rd, Parkhouse Ind Est West, Newcastle-under-Lyme, Staffordshire, ST5 7EF Telephone: 0800 612 4662 Email: info@rcmtd.biz	PROJECT: RCM	ISO No: 0000	DRAWN DM	REV 001	DATE 11/04/21	NOTE First Release	BY DM
		DRAWING ID: PROJ020-0009	DESCRIPTION: RCM Z Profile Non NHBC Apartment Separating Floor	DATE 09/04/21				

All performance data & systems specifications are for systems constructed with materials & components as shown. The exclusion or substitution of any other manufacturer materials or components invalidates both test data, system performance and compliance with CDM 2015. The information is provided as a general guide only. It is not intended to be used as a substitute for professional design advice. It is the responsibility of the user to ensure that the system is installed in accordance with the manufacturer's instructions and to ensure that the system is installed in accordance with the manufacturer's instructions. No part of this document may be copied without the prior approval from the Benx Group Technical Services Department. This statement should be read in conjunction with the standard terms and conditions of Benx Group.

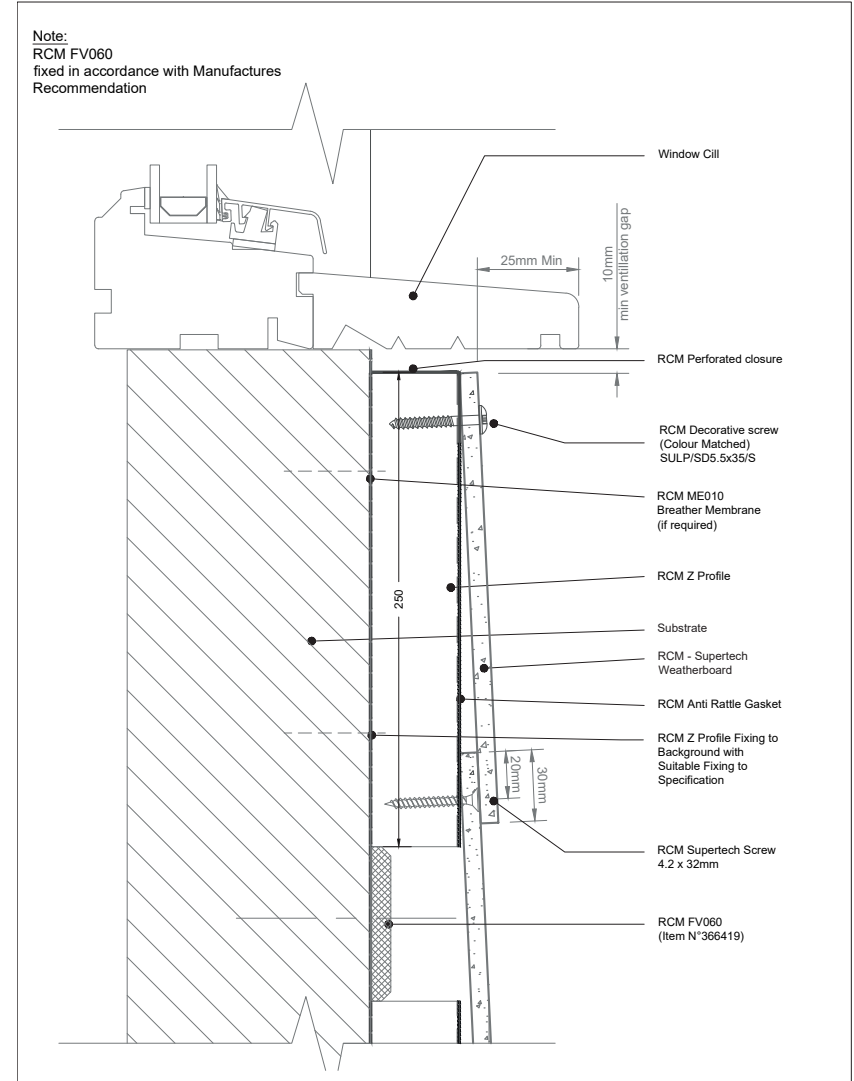


# Drawings - Non NHBC Z Profile



	Unit 25 - 27 Rosevale Rd, Parkhouse Ind Est West, Newcastle-under-Lyme, Staffordshire, ST15 7EP, Telephone: 0800 612 4662 Email: info@rcmtd.biz		PROJECT: RCM	ISO No: 0000	DRAWN DM	REV 001	DATE 17/04/21	NOTE First Release	BY DM
	DRAWING ID: PROJ020-0001		DESCRIPTION: RCM Z Profile Non NHBC Supertech - Base Starter		CHECK JB	DATE 09/04/21			
	AA/INTS		DATE						
	Email: info@rcmtd.biz								

All performance data & system specifications are for systems constructed with materials & components as shown. The inclusion or substitution of any other manufacturer's materials or components invalidates both test data, system performance and compliance with CDM 2015. The information is provided as a guide only. It is the responsibility of the user to ensure that the system is installed and maintained in accordance with the manufacturer's instructions. RCM benx does not accept responsibility for any claims or consequential loss. Acceptance of the content and agreement design responsibility rests entirely with the recipient. Any subsequent design changes that affect the detail which we are not informed of in a written format will void this detail. None of the content may be copied without the prior approval of the RCM benx technical services department. This agreement should be read in conjunction with the standard terms and conditions of RCM benx.



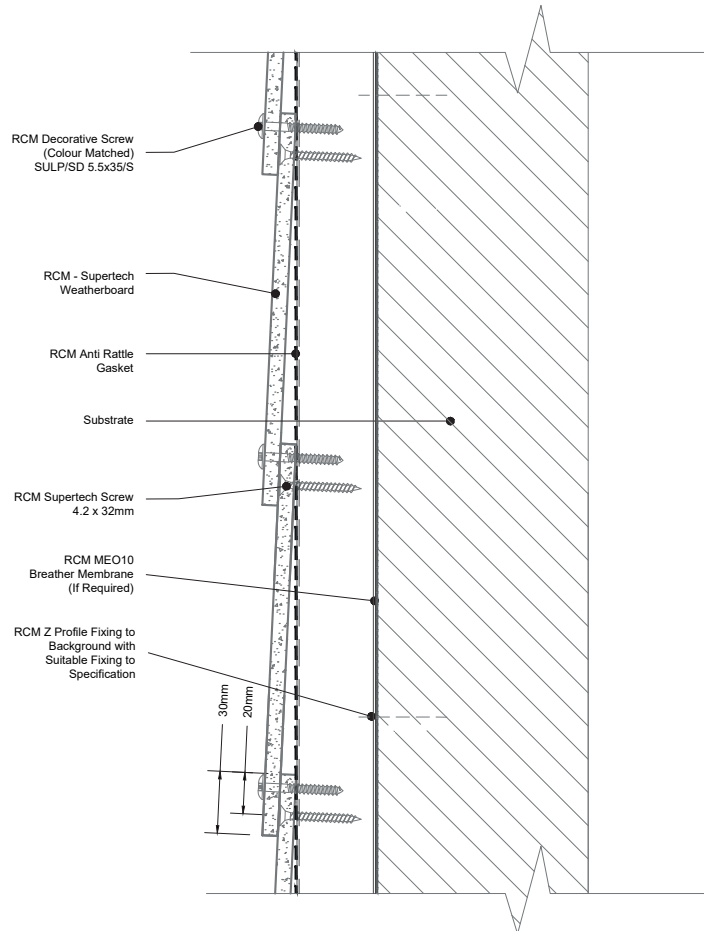
	Unit 25 - 27 Rosevale Rd, Parkhouse Ind Est West, Newcastle-under-Lyme, Staffordshire, ST15 7EP, Telephone: 0800 612 4662 Email: info@rcmtd.biz		PROJECT: RCM	ISO No: 0000	DRAWN DM	REV 001	DATE 17/04/21	NOTE First Release	BY DM
	DRAWING ID: PROJ020-0006		DESCRIPTION: RCM Z Profile Non NHBC Supertech - Window Cill		CHECK JB	DATE 09/04/21			
	AA/INTS		DATE						
	Email: info@rcmtd.biz								

All performance data & system specifications are for systems constructed with materials & components as shown. The inclusion or substitution of any other manufacturer's materials or components invalidates both test data, system performance and compliance with CDM 2015. The information is provided as a guide only. It is the responsibility of the user to ensure that the system is installed and maintained in accordance with the manufacturer's instructions. RCM benx does not accept responsibility for any claims or consequential loss. Acceptance of the content and agreement design responsibility rests entirely with the recipient. Any subsequent design changes that affect the detail which we are not informed of in a written format will void this detail. None of the content may be copied without the prior approval of the RCM benx technical services department. This agreement should be read in conjunction with the standard terms and conditions of RCM benx.

Note:  
RCM FV060  
fixed in accordance with Manufactures  
Recommendation

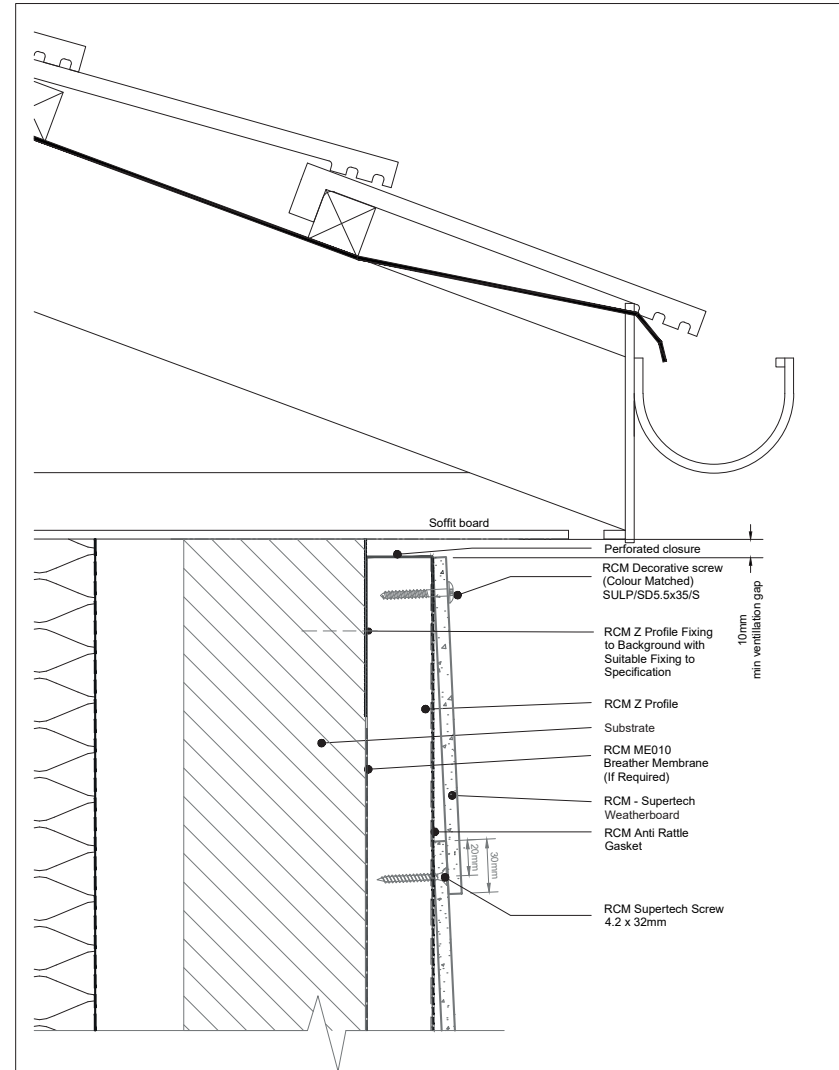
# Drawings - Non NHBC Z Profile

Note:  
Use Stainless Steel Fixings  
For Coastal Areas



	Unit 25 - 27 Rosevale Rd, Parkhouse Ind Est West, Newcastle-under-Lyme, Staffordshire, S15 7EF, Telephone: 0800 612 4662 Email: info@rcmtd.biz		PROJECT: RCM	ISO No: 0000	DRAWN DM	REV	DATE	NOTE	BY	
			DRAWING ID: PROJ020-0012		CHECK JB	005	10/4/20	First Release	DM	
			DESCRIPTION: RCM Z Profile Non NHBC Supertech - Coastal Or High Wind Areas		AGENTS					
					DATE: (DD/MM/YY)					

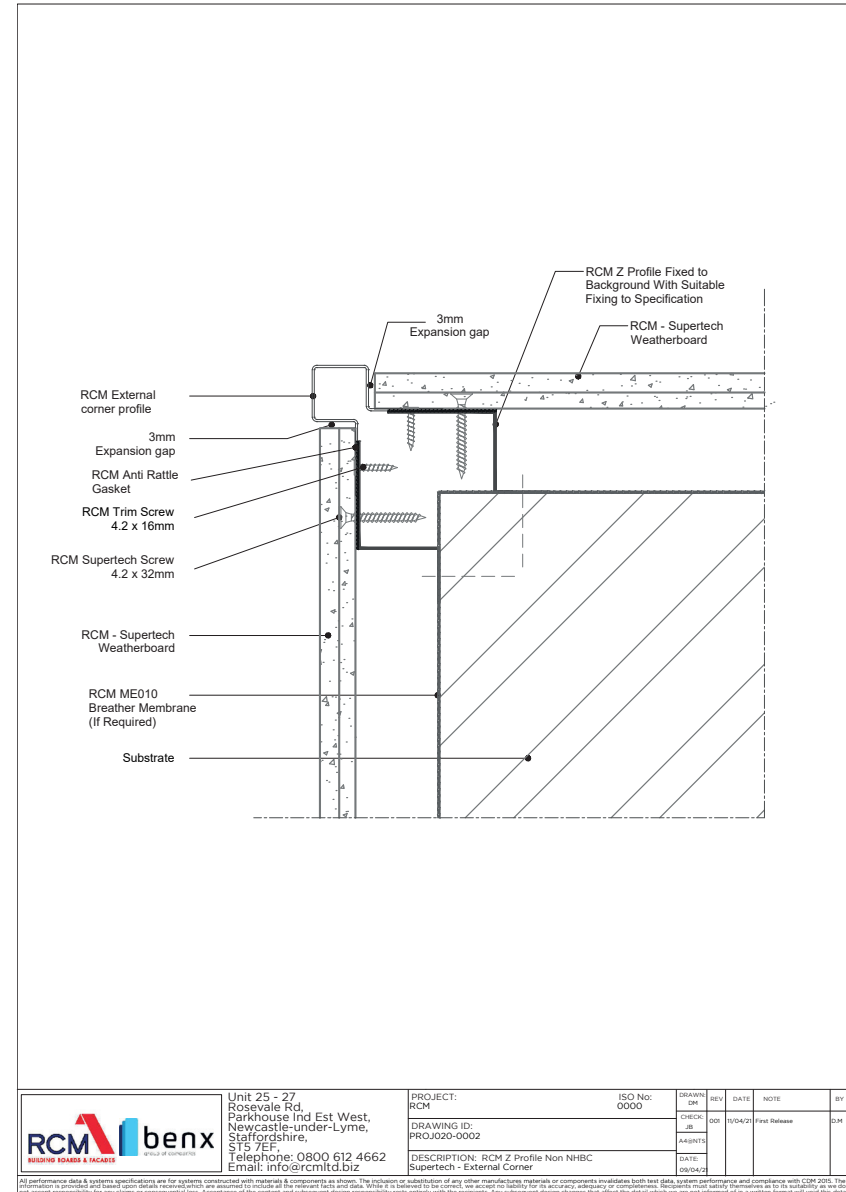
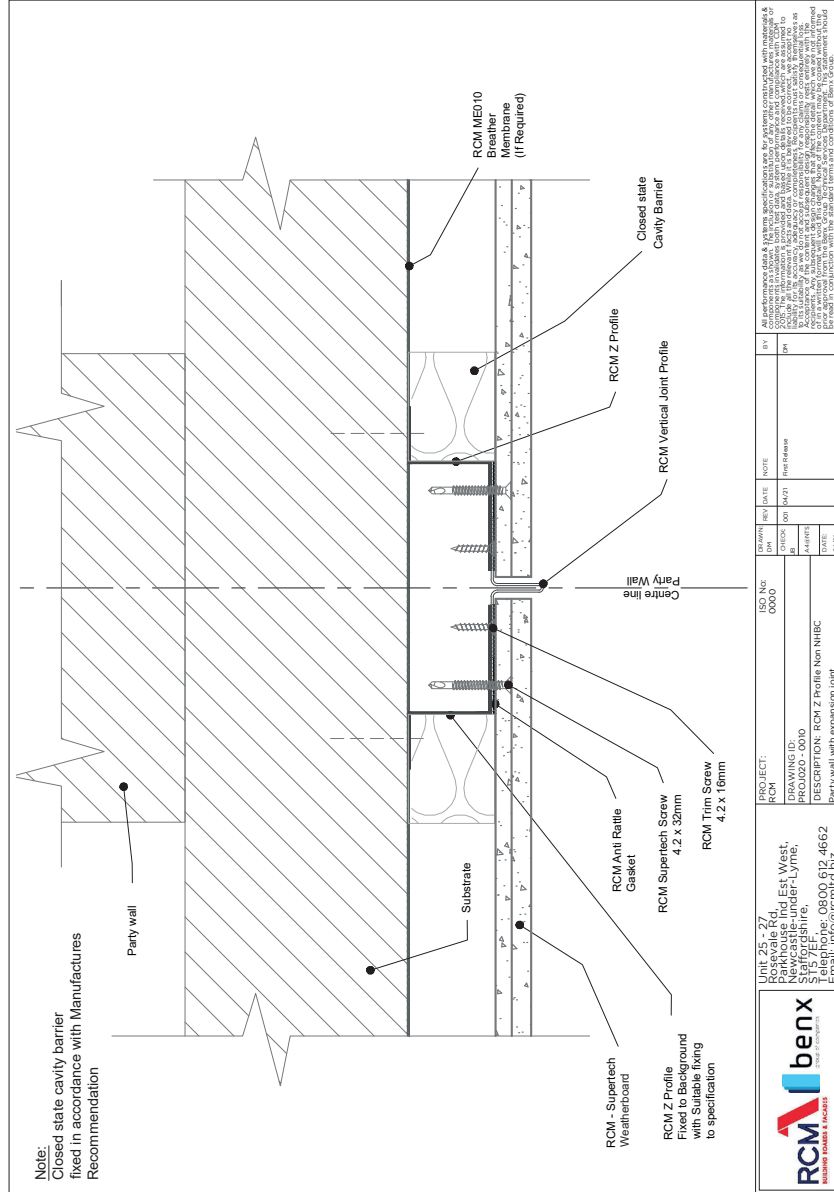
All performance data & system specifications are for systems constructed with materials & components as shown. The inclusion or substitution of any other manufacturer materials or components invalidates both test data, system performance and compliance with CDM 2015. The information is provided for your information only and does not constitute an offer of insurance. The information is provided for your information only and does not constitute an offer of insurance. The information is provided for your information only and does not constitute an offer of insurance. The information is provided for your information only and does not constitute an offer of insurance.



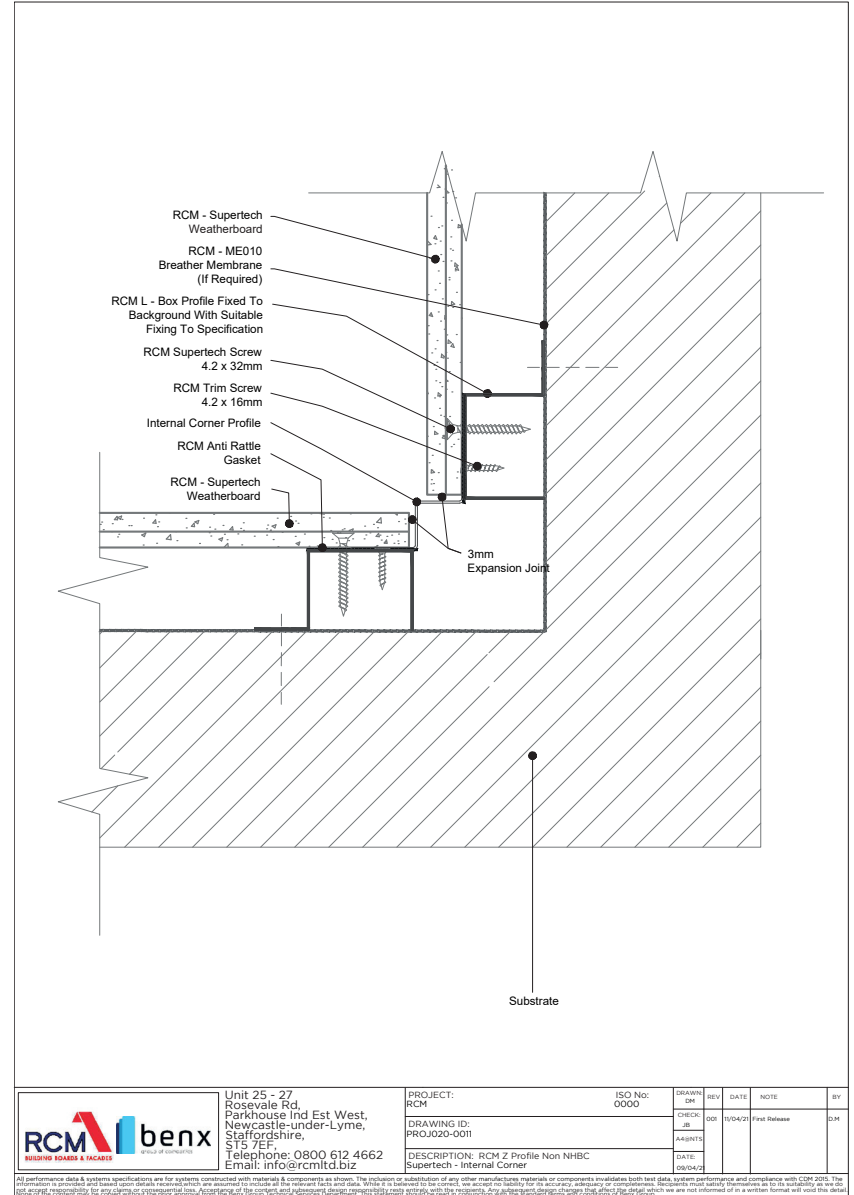
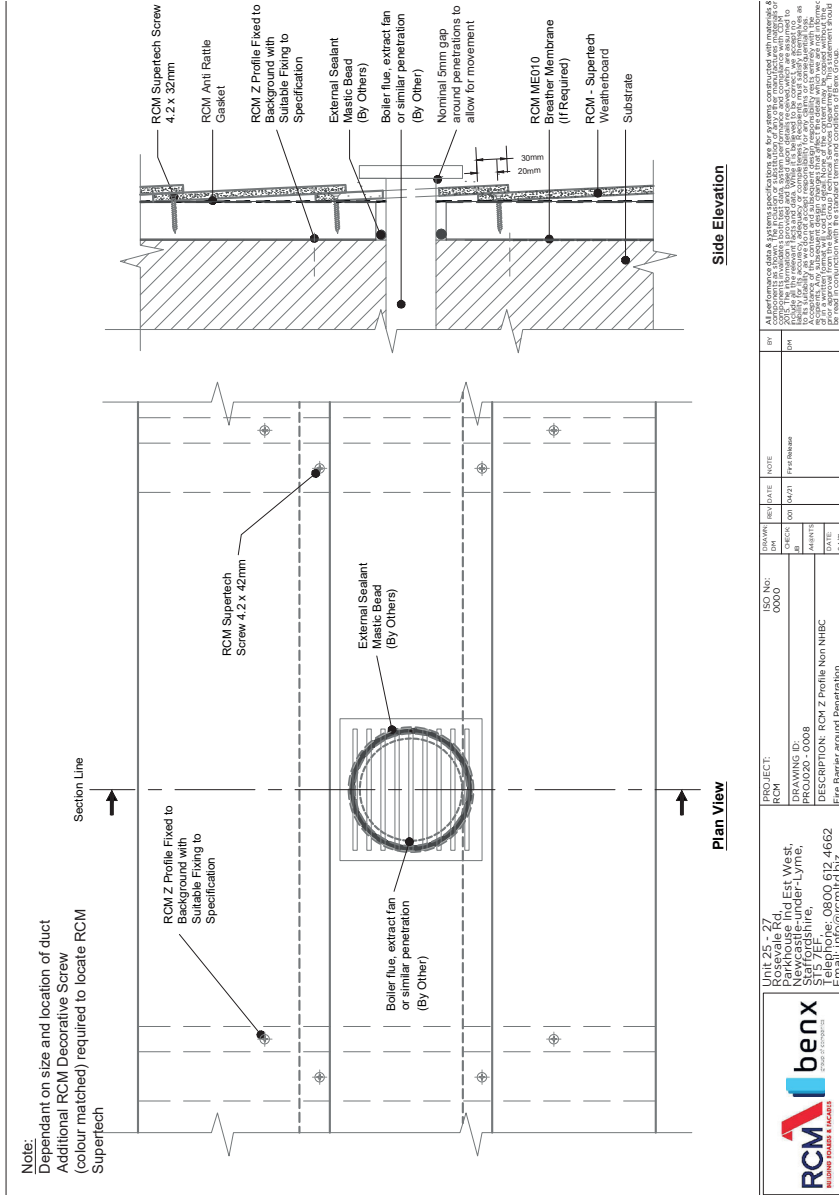
	Unit 25 - 27 Rosevale Rd, Parkhouse Ind Est West, Newcastle-under-Lyme, Staffordshire, S15 7EF, Telephone: 0800 612 4662 Email: info@rcmtd.biz		PROJECT: RCM	ISO No: 0000	DRAWN DM	REV	DATE	NOTE	BY	
			DRAWING ID: PROJ020-0007		CHECK JB	005	10/4/20	First Release	DM	
			DESCRIPTION: RCM Z Profile Non NHBC Supertech - Eaves		AGENTS					
					DATE: (DD/MM/YY)					

All performance data & system specifications are for systems constructed with materials & components as shown. The inclusion or substitution of any other manufacturer materials or components invalidates both test data, system performance and compliance with CDM 2015. The information is provided for your information only and does not constitute an offer of insurance. The information is provided for your information only and does not constitute an offer of insurance. The information is provided for your information only and does not constitute an offer of insurance. The information is provided for your information only and does not constitute an offer of insurance.

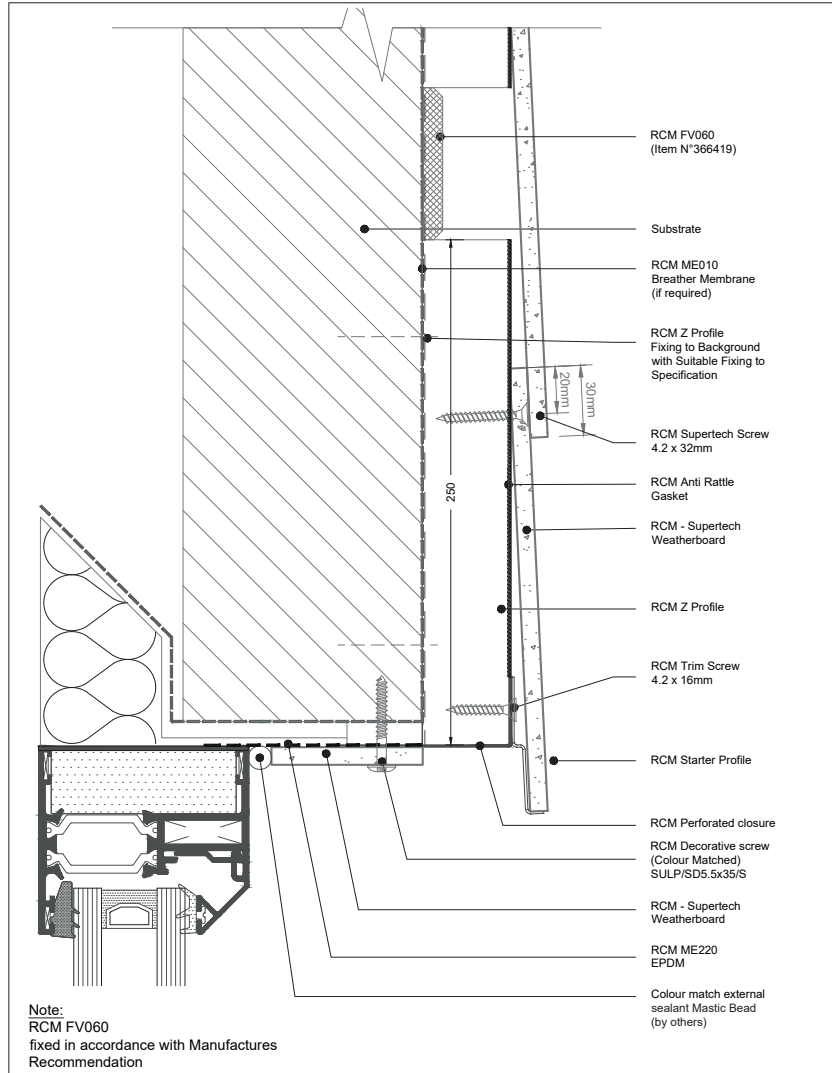
# Drawings - Non NHBC Z Profile



# Drawings - Non NHBC Z Profile

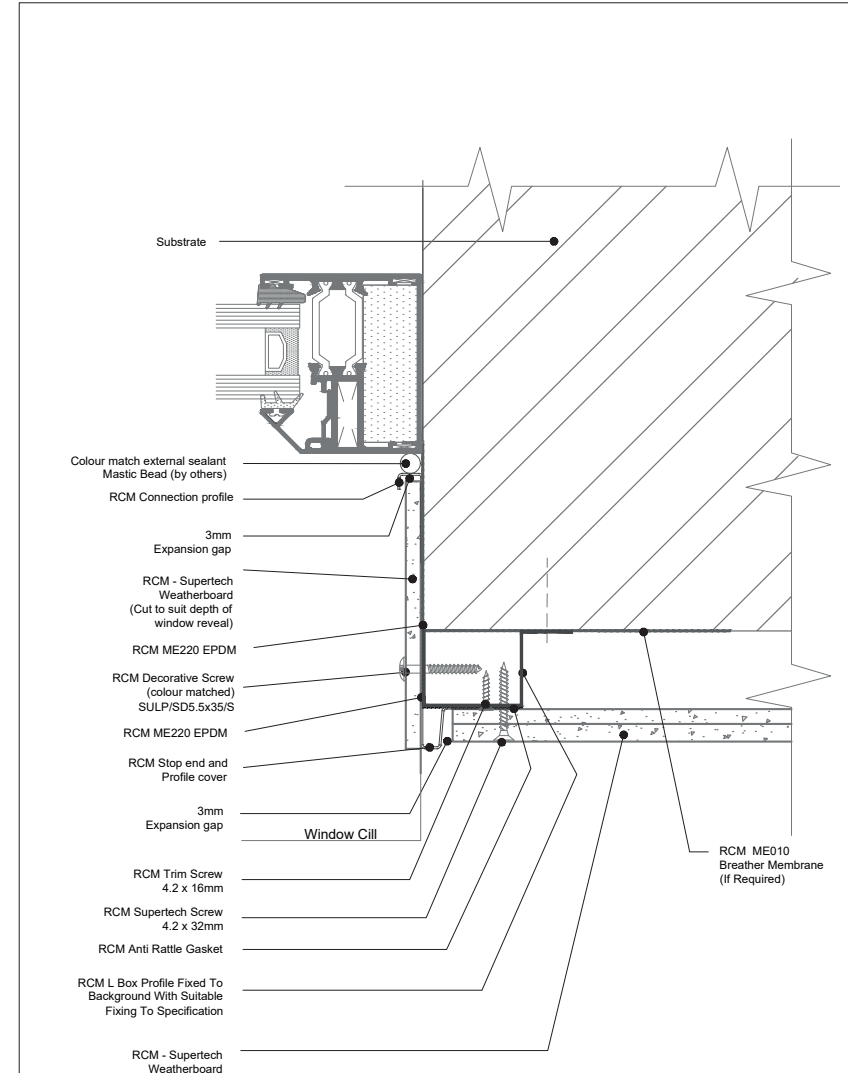


# Drawings - Non NHBC Z Profile



	Unit 25 - 27 Rosevale Rd, Parkhouse Ind Est West, Newcastle-under-Lyme, Staffordshire, ST5 7EF, Telephone: 0800 612 4662 Email: info@rcmtd.biz	PROJECT: RCM	ISO No: 0000	DRAWN JH	REV	DATE	NOTE	BY
		DRAWING ID: PRJ020-0005		CHECK JH	001	10/04/21	First Release	D.H
				APPROVED [Signature]				
				DATE:				
			DESCRIPTION: RCM Z Profile Non NHBC Supertech - Window Head					

All performance data & system specifications are for systems constructed with materials & components as shown. The inclusion or substitution of any other manufacturer materials or components invalidates both test data, system performance and compliance with CDM 2015. The manufacturer is not liable for any damage or consequential loss. Acceptance of the content and subsequent design responsibility rests entirely with the recipient. Any subsequent design changes that affect the design which we are not informed of in a written format will void the detail. The recipient must be advised that the detail is not a contract document and is not intended to be used as such.



	Unit 25 - 27 Rosevale Rd, Parkhouse Ind Est West, Newcastle-under-Lyme, Staffordshire, ST5 7EF, Telephone: 0800 612 4662 Email: info@rcmtd.biz	PROJECT: RCM	ISO No: 0000	DRAWN JH	REV	DATE	NOTE	BY
		DRAWING ID: PRJ020-0003		CHECK JH	001	10/04/21	First Release	D.H
				APPROVED [Signature]				
				DATE:				
			DESCRIPTION: RCM Z Profile Non NHBC Supertech - Window Jamb					

All performance data & system specifications are for systems constructed with materials & components as shown. The inclusion or substitution of any other manufacturer materials or components invalidates both test data, system performance and compliance with CDM 2015. The manufacturer is not liable for any damage or consequential loss. Acceptance of the content and subsequent design responsibility rests entirely with the recipient. Any subsequent design changes that affect the design which we are not informed of in a written format will void the detail. The recipient must be advised that the detail is not a contract document and is not intended to be used as such.

## Touch Up Paint

Supertech Weatherboard touch up paint is available in 0.5 litre quantities for all colours.

The paint should be used sparingly on small scratches and for cut edges.

## Safety

When processing Supertech Weatherboard dust can be released which can cause irritation to airways and eyes. Long term exposure to any dust can be harmful to health.

For more information, please refer to the safety data sheet which can be found in the technical section for Supertech Weatherboard at [www.buildingboards.co.uk](http://www.buildingboards.co.uk).

## Efflorescence

As with all cement based materials, efflorescence (Lime Bloom) can occur but this is only a temporary aesthetic problem. It will not cause any damage to the performance of the weatherboard.

Efflorescence is caused by the ingress of water behind the boards which dissolves salts contained in the weatherboard. This salt water can then pass through the boards and result in salt deposits being left when the water finally evaporates.

Inadequate storage and installation are the key causes of efflorescence. When installing or storing Supertech Weatherboards in very wet conditions water retention can occur between the weatherboard. We recommend that you follow our storage and handling information in order to reduce the chance of efflorescence and maintain the appearance of the weatherboards.

The length of time that these salt deposits will remain depends on the quantity of salts and the weather conditions that the weatherboards are exposed to. Rain and wind will help contribute to the removal of these deposits. Alternatively, carefully using warm water and a soft brush or cloth can help speed up the removal and regain the desired appearance. Extra care and attention should be taken in order to ensure no damage is caused to the painted surface. The use of pressure washers should be avoided.

If the above is proving ineffective then the salt deposits can be removed by wiping a 9.5% acetic acid over the surface. We recommend a small patch test first to ensure no damage will be created to the painted surface. Without allowing the solution to dry, leave it on for a few minutes and then wash away with lots of cold water without allowing run off's to touch unaffected areas. This can be repeated if required.

## Maintenance

With normal UK weather conditions, Supertech Weatherboard does not require a great deal of maintenance to maintain its strength, properties and function. Environmental impacts may, however, influence the visual appearance. It is, however, best practice to complete an annual inspection of the façade to ensure the integrity of the ventilation gaps, fixings and joints and action any required maintenance to prolong overall life expectancy.

For coastal locations with generally more aggressive salt laden moist air and wind driven sand more frequent inspections and general maintenance may be required with particular attention to corners around doors and windows and façade corner details especially when they face the direction of prevailing winds.

Supertech weatherboard can be cleaned with cold or tepid water with the addition of very mild household cleaning products (no solvents or bleach) using a soft cloth. Washing should commence at the top and work down the façade in a structured manner. All washed areas should be rinsed with clean water and as with all similar applications, a small non-visible test area should be completed first. It is considered best practice to clean the weatherboard at least once a year. High-pressure jet washers and strong detergents should never be used.

RMC is part of the Benx group of companies, established in 2004, RCM is a major supplier of complete through wall solutions to the UK construction industry. Supplying specialist building boards, façades, breather membranes and airtightness solutions, RCM offers a fully integrated approach to the building envelope whilst delivering on time and budget.

At our core, RCM offer a wide and varied range of building boards, providing a solution for all structural applications. From timber to steel frame, concrete to modular, high to low rise, internal to external wall linings and buildings with high weather exposure, we offer a solution.

RCM are a market leader in providing innovative products and solutions; finding the latest technology is an ethos which lies at the very heart of our business and one which separates us from the competition. At the forefront of industry research and development, we constantly strive to innovate and develop our range of solutions. By providing a complete solution, from a single supplier, we can help reduce costs, time complexity and risk.

RCM work openly in collaboration with clients and supply-chain partners to mutual benefit to ensure that the most efficient and appropriate solutions can be found for every project.


At RCM we take great care to ensure that we offer a complete service, from initial advice through to delivery. Our experienced and complimentary technical support team can provide advice at all stages of your project to help you achieve your vision. We offer a service which is flexible and meets your needs whilst remaining competitive. A fully integrated fabrication service allows customers to order both boards and façades to exact size in order to reduce construction time,

minimise wastage and improve environmental impact. RCM's products are specified for use in external façades, fire protection, acoustic, airtightness and decorative applications amongst other uses.

RCM (Roofing and Cladding Materials Ltd)  
Tel: 0800 612 4662  
Email: [technical@rcmltd.biz](mailto:technical@rcmltd.biz)  
[www.buildingboards.co.uk](http://www.buildingboards.co.uk)



Thank you for taking the time to review our Supertech Installation Guide  
If you require any further information on our products or services, please contact us.

Sales  0800 612 4662  [sales@benx.co.uk](mailto:sales@benx.co.uk)

Technical  0800 488 0531  [technicalservices@benx.co.uk](mailto:technicalservices@benx.co.uk)  [www.benx.co.uk](http://www.benx.co.uk)



#### Disclaimer

By using or accessing the brochure, you agree with the following Disclaimer. Benx Limited ('the Company') reserves the right to terminate, revoke, modify, alter, add and delete any of the information in the brochure. The Company shall be under no obligation to notify the user of the amendment to the contents of the brochure. Computer generated images, walkthroughs and render images used on this brochure are the artist's impression and are an indicative of the actual designs

The information in this brochure is presented as general information and no representation or warranty is expressly or impliedly given as to its accuracy, completeness or correctness. It does not constitute part of a legal offer or contract. While every effort has been made to ensure its accuracy, this brochure may unintentionally include inaccuracies or errors. The user must verify all the details and specifications independently with the Company prior to concluding any decision to purchase or use the Company's products.

In no event shall the Company be liable to the user or any third party for damages, losses and causes of action (including but not limited to negligence), errors, injury, whether direct, indirect, consequential or incidental, suffered or incurred by any person/s or due to any use and/or inability to use this brochure or information, action taken or abstained through this brochure. While every effort has been made by the Company to ensure that information in the brochure is up to date, accurate and correct, the users are requested to make their independent enquiry before relying upon the same.