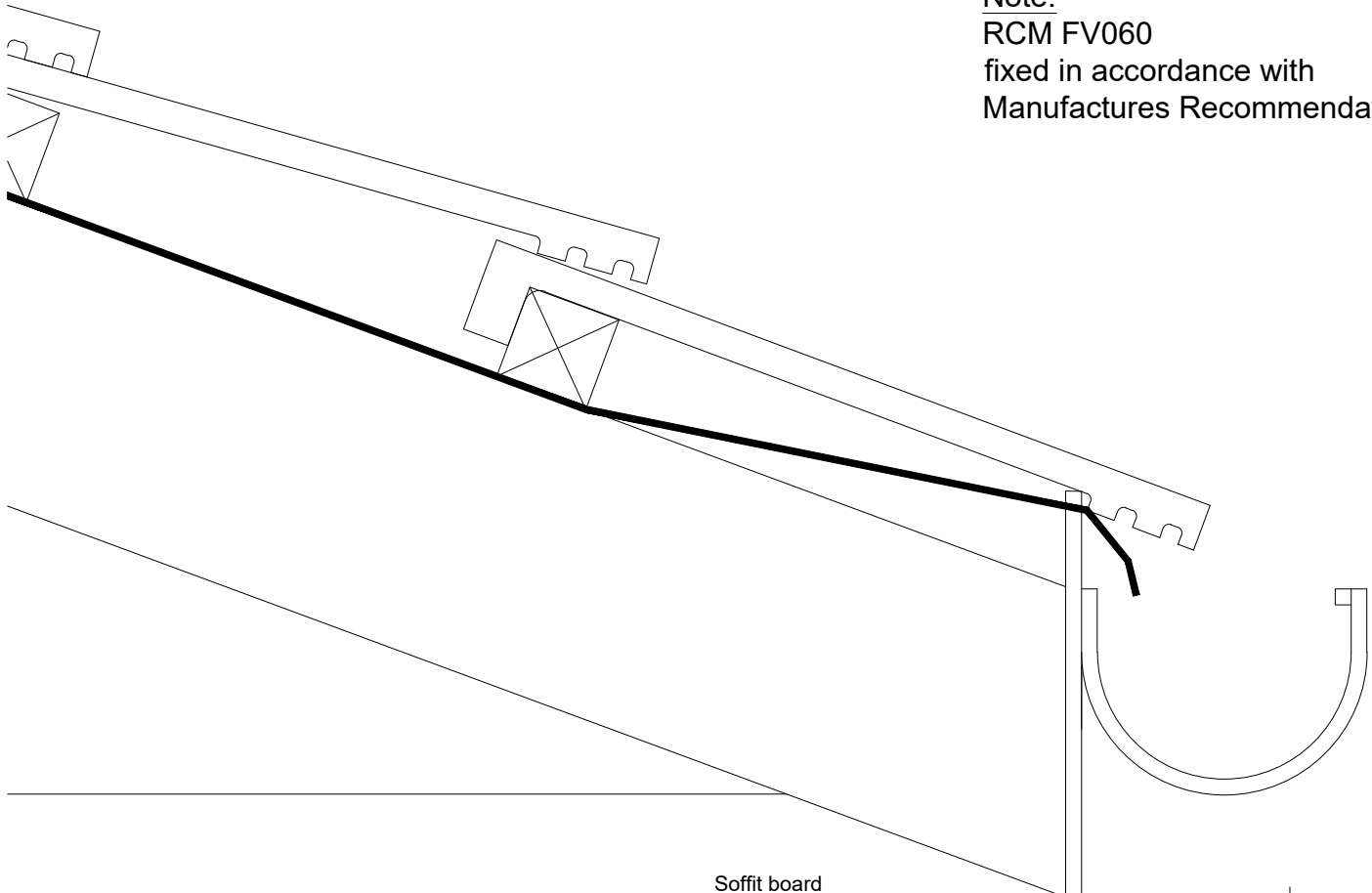
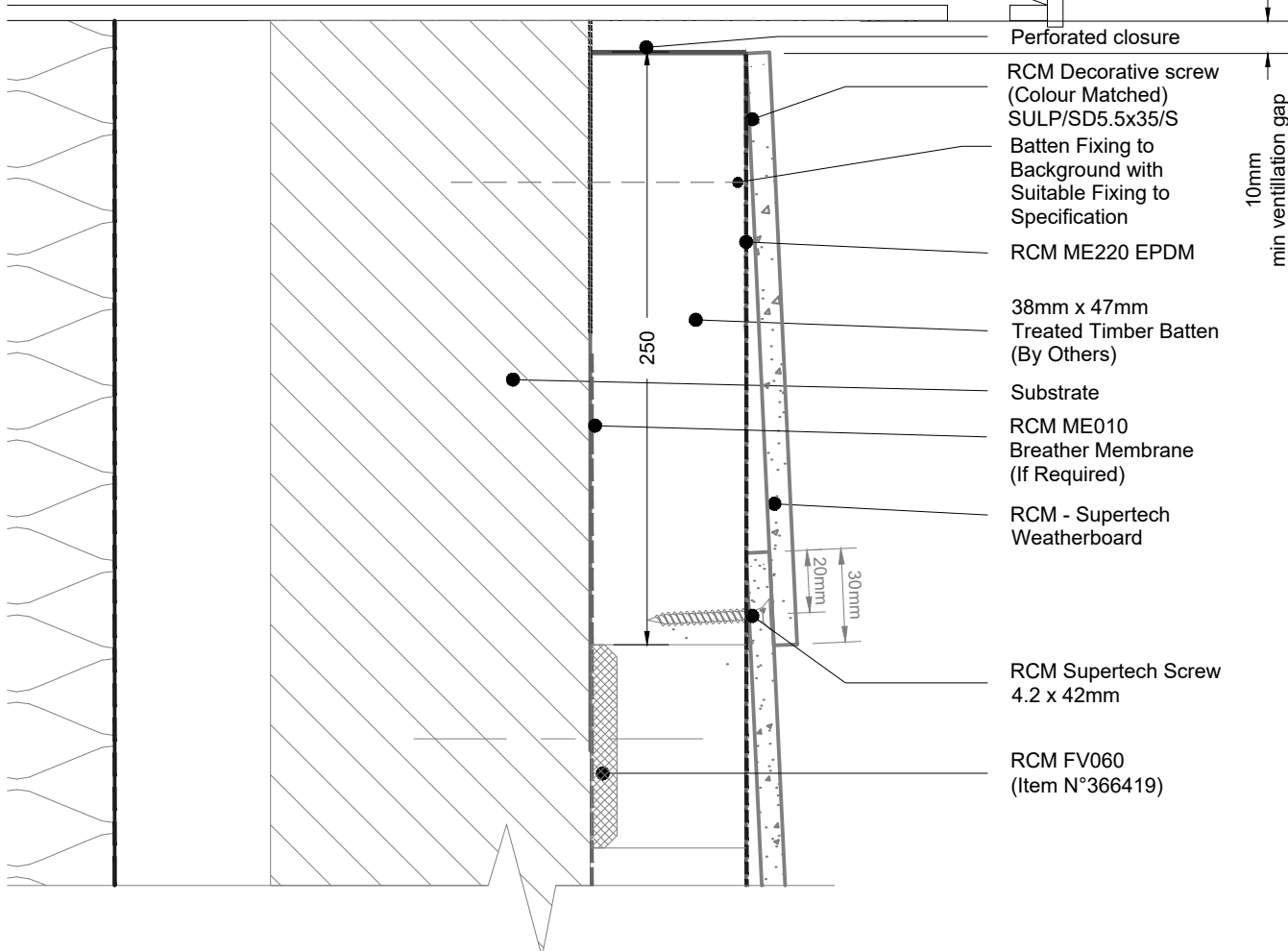


Note:
RCM FV060
 fixed in accordance with
 Manufactures Recommendation



Soffit board



Perforated closure

RCM Decorative screw
 (Colour Matched)
 SULP/SD5.5x35/S

Batten Fixing to
 Background with
 Suitable Fixing to
 Specification

RCM ME220 EPDM

38mm x 47mm
 Treated Timber Batten
 (By Others)

Substrate

RCM ME010
 Breather Membrane
 (If Required)

RCM - Supertech
 Weatherboard

RCM Supertech Screw
 4.2 x 42mm

RCM FV060
 (Item N°366419)

10mm
 min ventilation gap

| | | | | | | |
|---|-----------------|-------------------|-----|----------|---------------|-----|
| PROJECT: RCM | ISO No: 0000 | DRAWN: DM | REV | DATE | NOTE | BY |
| DRAWING ID: PROJ020-0007 | | CHECK: JB | 001 | 11/04/21 | First Release | D.M |
| DESCRIPTION: Timber Batten NHBC Recommendation Supertech - Eaves | | A4@NTS | | | | |
| | | DATE: 09/04/21 | | | | |



Unit 25 - 27
 Rosevale Rd,
 Parkhouse Ind Est West,
 Newcastle-under-Lyme,
 Staffordshire,
 ST5 7EF,
 Telephone: 0800 612 4662
 Email: info@rcmltd.biz

All performance data & systems specifications are for systems constructed with materials & components as shown. The inclusion or substitution of any other manufactures materials or components invalidates both test data, system performance and compliance with CDM 2015. The information is provided and based upon details received which are assumed to include all the relevant facts and data. While it is believed to be correct, we accept no liability for its accuracy, adequacy or completeness. Recipients must satisfy themselves as to its suitability as we do not accept responsibility for any claims or consequential loss. Acceptance of the content and subsequent design responsibility rests entirely with the recipient. Any subsequent design changes that affect the detail which we are not informed of in a written format will void this detail. None of the content may be copied without the prior approval from the Benx Group Technical Services Department. This statement should be read in conjunction with the standard terms and conditions of Benx Group.