


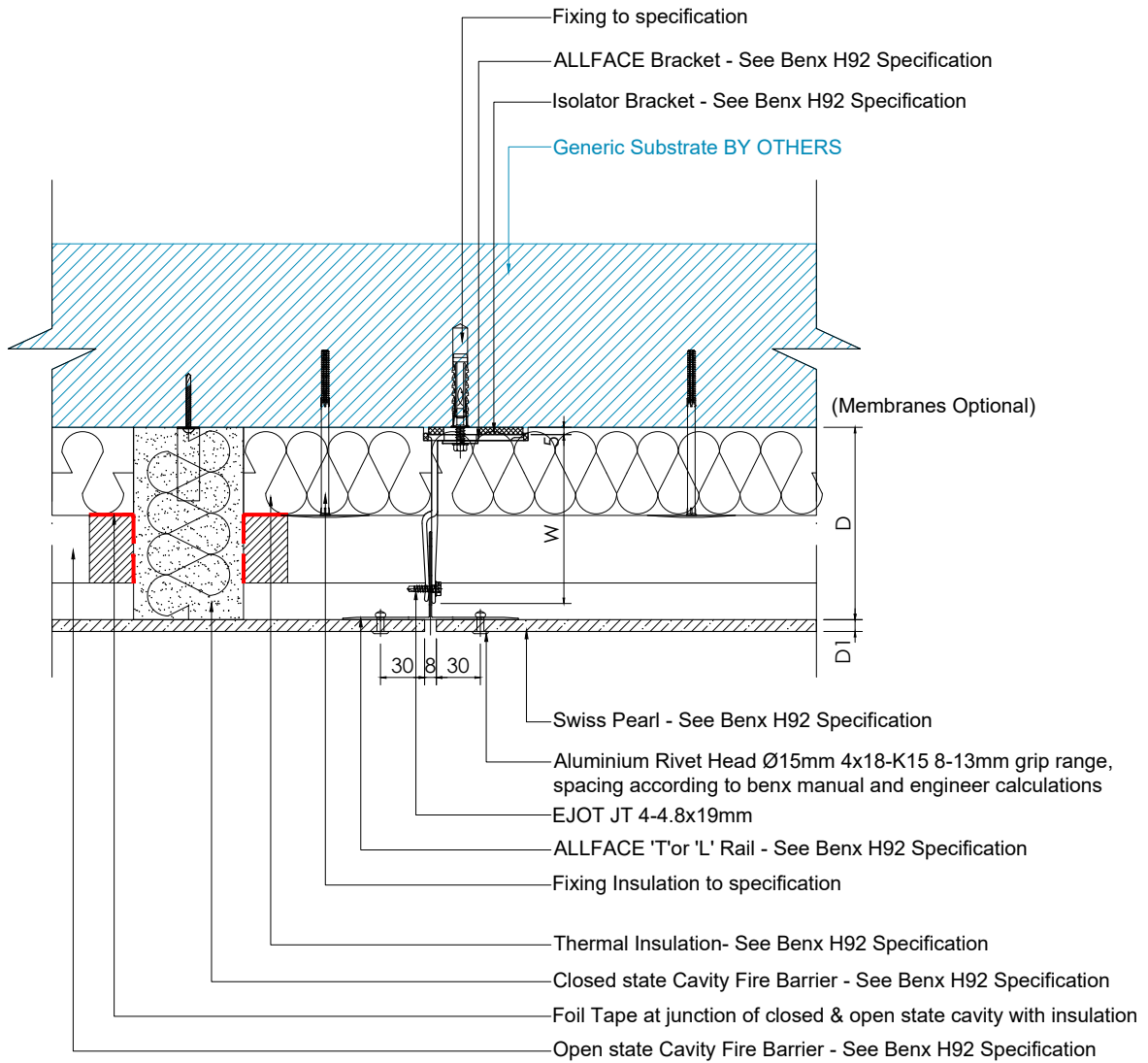


All performance data & systems specifications are for systems constructed with materials & components as shown. The inclusion or substitution of any other manufactures materials or components invalidates both test data, system performance and compliance with CDM 2015. The information is provided and based upon details received, which are assumed to include all the relevant facts and data. While it is believed to be correct, we accept no liability for its accuracy, adequacy or completeness. Recipients must satisfy themselves as to its suitability as we do not accept responsibility for any claims or consequential loss. Acceptance of the content and subsequent design responsibility rests entirely with the recipient. Any subsequent design changes that affect the detail which we are not informed of in a written format will void this detail. None of the content may be copied without the prior INFORMATION from the Benx Group Technical Services Department. This statement should be read in conjunction with the standard terms and conditions of Benx Group.


|  |   |  |   |  |   |
|--|---|--|---|--|---|
| <br>  | Unit 26 Rosevale Rd,<br>Parkhouse Ind Est West,<br>Newcastle-under-Lyme,<br>Staffordshire, ST5 7EF,<br>Telephone: 0845 130 0983<br>Email:<br><a href="mailto:technicalservices@benx.co.uk">technicalservices@benx.co.uk</a> |  | REV DATE NOTE<br>A<br>B AUG21 benx MANUAL REF<br>C<br>D | BY DRAWING ST: INFORMATION<br>PROJECT: Through Wall Systems 06 SwissPearl ISO No: 0000<br>DRAWING ID: TYPICAL DETAILS DESCRIPTION: DETAILS KEY<br>DRAWING No: TWS06.TDG.0.00 | DRAWN: MT<br>CHECK: NTS@A4<br>DATE: June202<br>REV: B |
|--|---|--|---|--|---|

# TWS06 Generic Substrate

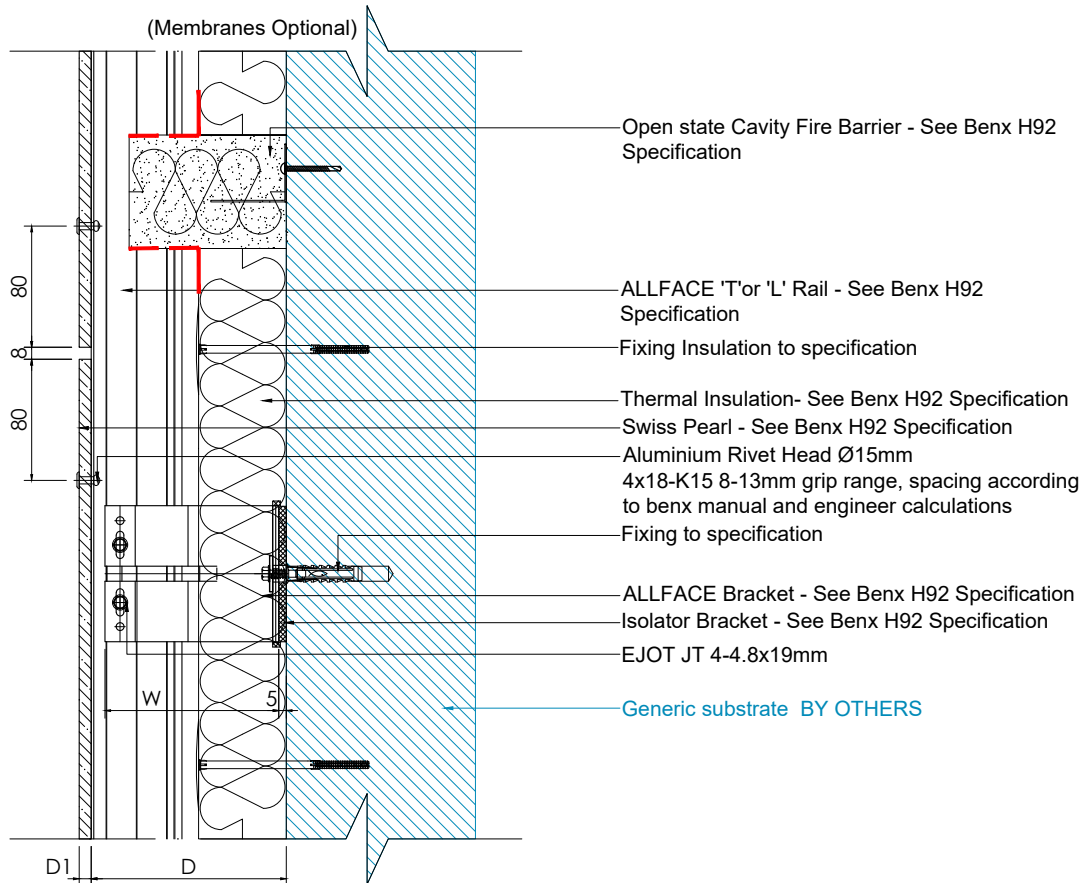


See <https://www.buildingboards.co.uk> for all product's range & information.

All performance data & systems specifications are for systems constructed with materials & components as shown. The inclusion or substitution of any other manufactures materials or components invalidates both test data, system performance and compliance with CDM 2015. The information is provided and based upon details received, which are assumed to include all the relevant facts and data. While it is believed to be correct, we accept no liability for its accuracy, adequacy or completeness. Recipients must satisfy themselves as to its suitability as we do not accept responsibility for any claims or consequential loss. Acceptance of the content and subsequent design responsibility rests entirely with the recipient. Any subsequent design changes that affect the detail which we are not informed of in a written format will void this detail. None of the content may be copied without the prior INFORMATION from the Benx Group Technical Services Department. This statement should be read in conjunction with the standard terms and conditions of Benx Group.

|  |   |  |  |  |  |
|--|---|--|--|--|--|
|  | Unit 26 Rosevale Rd,<br>Parkhouse Ind Est West,<br>Newcastle-under-Lyme,<br>Staffordshire, ST5 7EF,<br>Telephone: 0845 130 0983<br>Email:<br><a href="mailto:technicalservices@benx.co.uk">technicalservices@benx.co.uk</a> |  | REV DATE NOTE BY<br>A 22/07 BRACKETS/FIRE EXPANSION MT<br>B AUG21 benx MANUAL REF MT<br>C<br>D | DRAWING ST: INFORMATION<br>PROJECT: Through Wall Systems 06 SwissPearl ISO No: 0000<br>DRAWING ID: TYPICAL DETAILS DESCRIPTION: VERTICAL JOINT<br>DRAWING No: TWS06.TDG.0.01 | DRAWN: MT<br>CHECK:<br>NTS@A4<br>DATE: June202<br>REV: B |
|--|---|--|--|--|--|

# TWS06 Generic Substrate



See <https://www.buildingboards.co.uk> for all product's range & information.

All performance data & systems specifications are for systems constructed with materials & components as shown. The inclusion or substitution of any other manufactures materials or components invalidates both test data, system performance and compliance with CDM 2015. The information is provided and based upon details received, which are assumed to include all the relevant facts and data. While it is believed to be correct, we accept no liability for its accuracy, adequacy or completeness. Recipients must satisfy themselves as to its suitability as we do not accept responsibility for any claims or consequential loss. Acceptance of the content and subsequent design responsibility rests entirely with the recipient. Any subsequent design changes that affect the detail which we are not informed of in a written format will void this detail. None of the content may be copied without the prior INFORMATION from the Benx Group Technical Services Department. This statement should be read in conjunction with the standard terms and conditions of Benx Group.

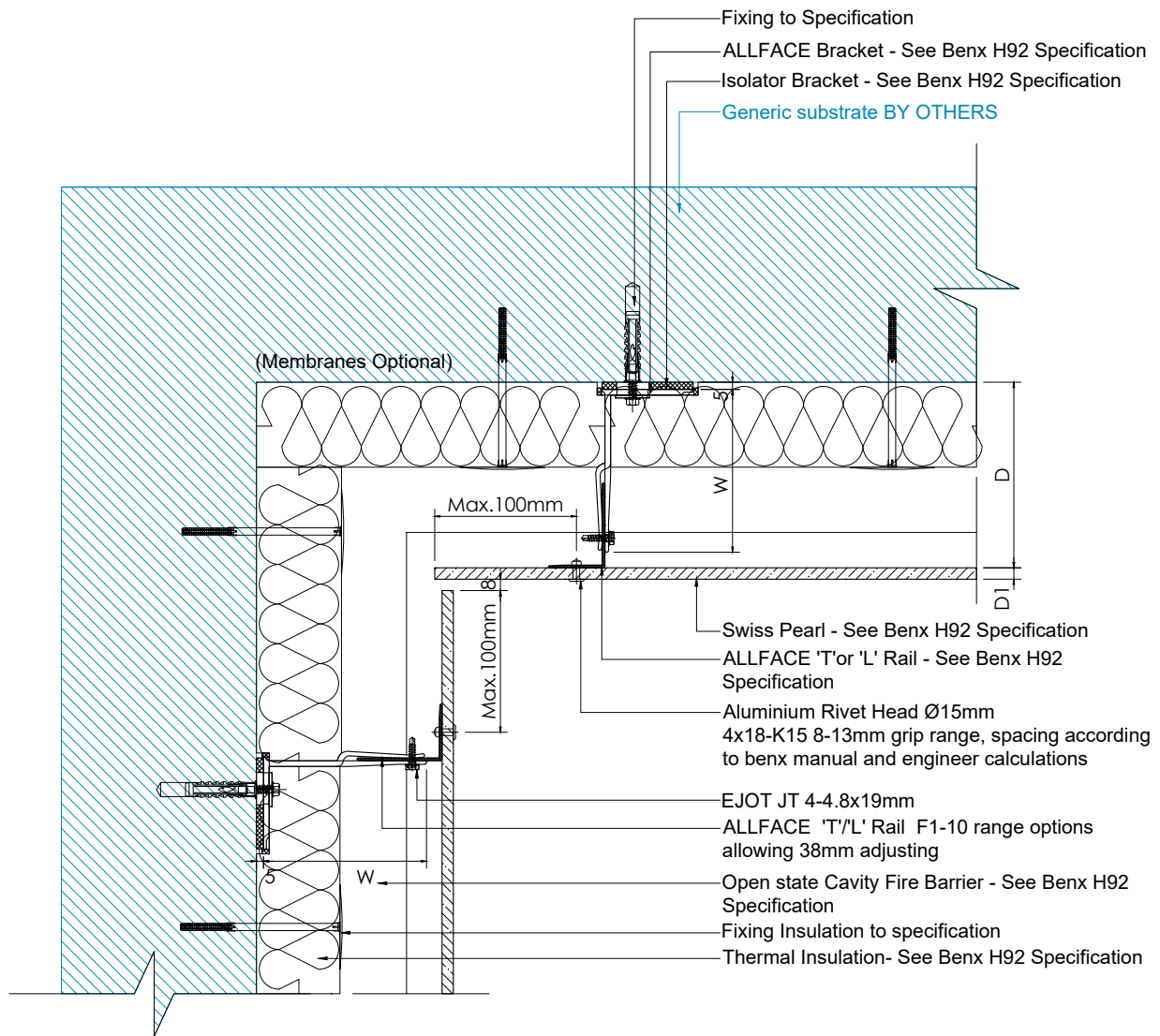


Unit 26 Rosevale Rd,  
Parkhouse Ind Est West,  
Newcastle-under-Lyme,  
Staffordshire, ST5 7EF,  
Telephone: 0845 130 0983  
Email:  
[technicalservices@benx.co.uk](mailto:technicalservices@benx.co.uk)




| REV | DATE  | NOTE                    | BY | DRAWING ST: | INFORMATION                        | DRAWN:           |
|-----|-------|-------------------------|----|-------------|------------------------------------|------------------|
| A   | 22/07 | BRACKETS/FIRE EXPANSION | MT | PROJECT:    | Through Wall Systems 06 SwissPearl | ISO No:          |
| B   | AUG21 | benx MANUAL REF         | MT |             |                                    | 0000             |
| C   |       |                         |    | DRAWING ID: | TYPICAL DETAILS                    | DESCRIPTION:     |
| D   |       |                         |    |             |                                    | HORIZONTAL JOINT |
|     |       |                         |    | DRAWING No: | TWS06.TDG.0.02                     | REV:             |
|     |       |                         |    |             |                                    | B                |

# TWS06 Generic Substrate

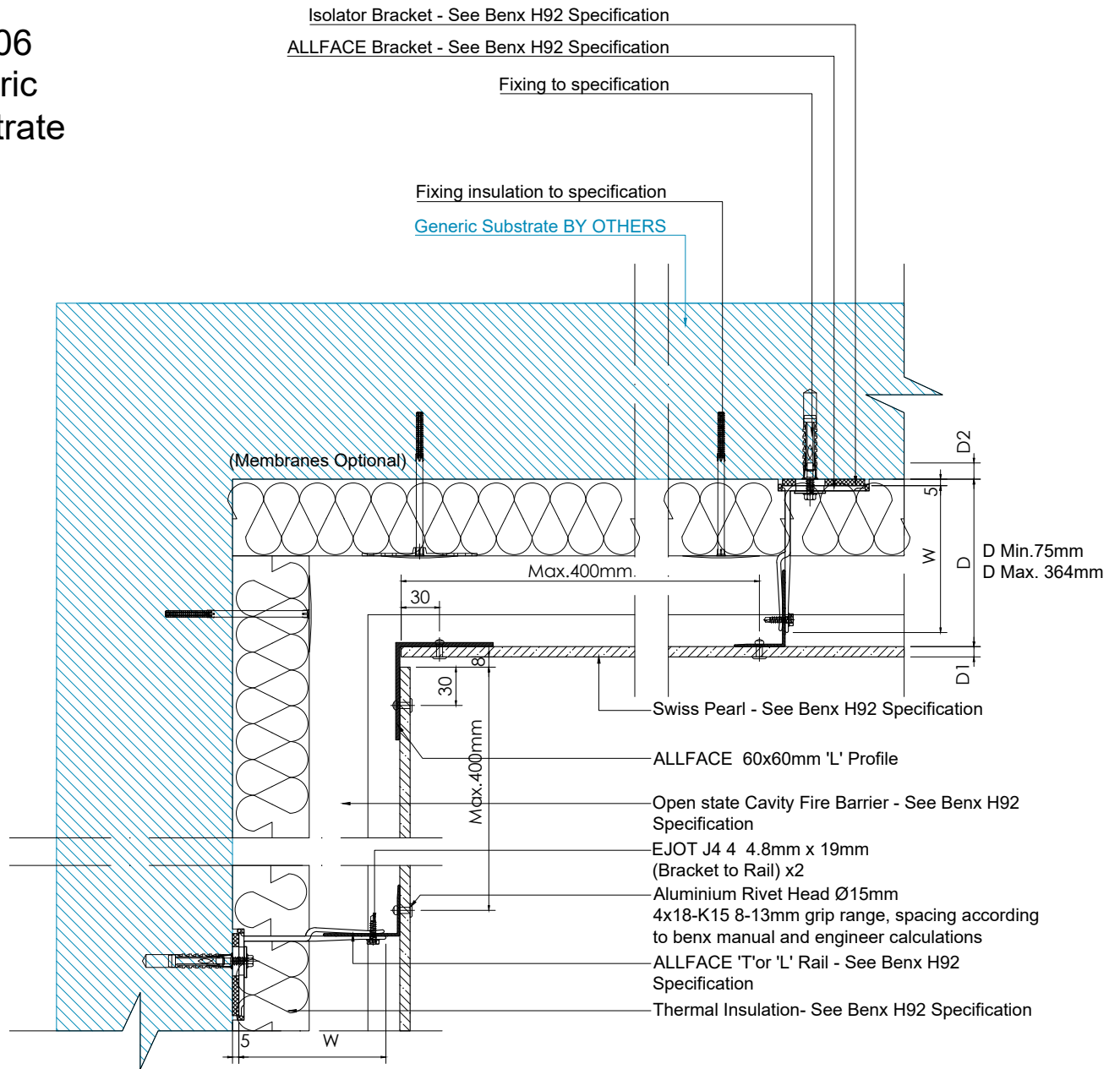


See <https://www.buildingboards.co.uk> for all product's range & information.

All performance data & systems specifications are for systems constructed with materials & components as shown. The inclusion or substitution of any other manufactures materials or components invalidates both test data, system performance and compliance with CDM 2015. The information is provided and based upon details received, which are assumed to include all the relevant facts and data. While it is believed to be correct, we accept no liability for its accuracy, adequacy or completeness. Recipients must satisfy themselves as to its suitability as we do not accept responsibility for any claims or consequential loss. Acceptance of the content and subsequent design responsibility rests entirely with the recipient. Any subsequent design changes that affect the detail which we are not informed of in a written format will void this detail. None of the content may be copied without the prior INFORMATION from the Benx Group Technical Services Department. This statement should be read in conjunction with the standard terms and conditions of Benx Group.




|  |   |  |   |   |  |
|--|---|--|---|---|--|
|  | Unit 26 Rosevale Rd,<br>Parkhouse Ind Est West,<br>Newcastle-under-Lyme,<br>Staffordshire, ST5 7EF,<br>Telephone: 0845 130 0983<br>Email:<br><a href="mailto:technicalservices@benx.co.uk">technicalservices@benx.co.uk</a> |  | REV DATE NOTE<br>A AUG21 benx MANUAL REF<br>B<br>C<br>D | BY DRAWING ST: INFORMATION<br>PROJECT: Through Wall Systems 06 SwissPearl ISO No: 0000<br>DRAWING ID: TYPICAL DETAILS DESCRIPTION: INT. CORNER Cantilever<br>DRAWING No: TWS06.TDG.0.03 | DRAWN: MT<br>CHECK: NTS@A4<br>DATE: June2022<br>REV: B |
|  |   |  |   |   |  |
|  |   |  |   |   |  |
|  |   |  |   |   |  |

# TWS06 Generic Substrate

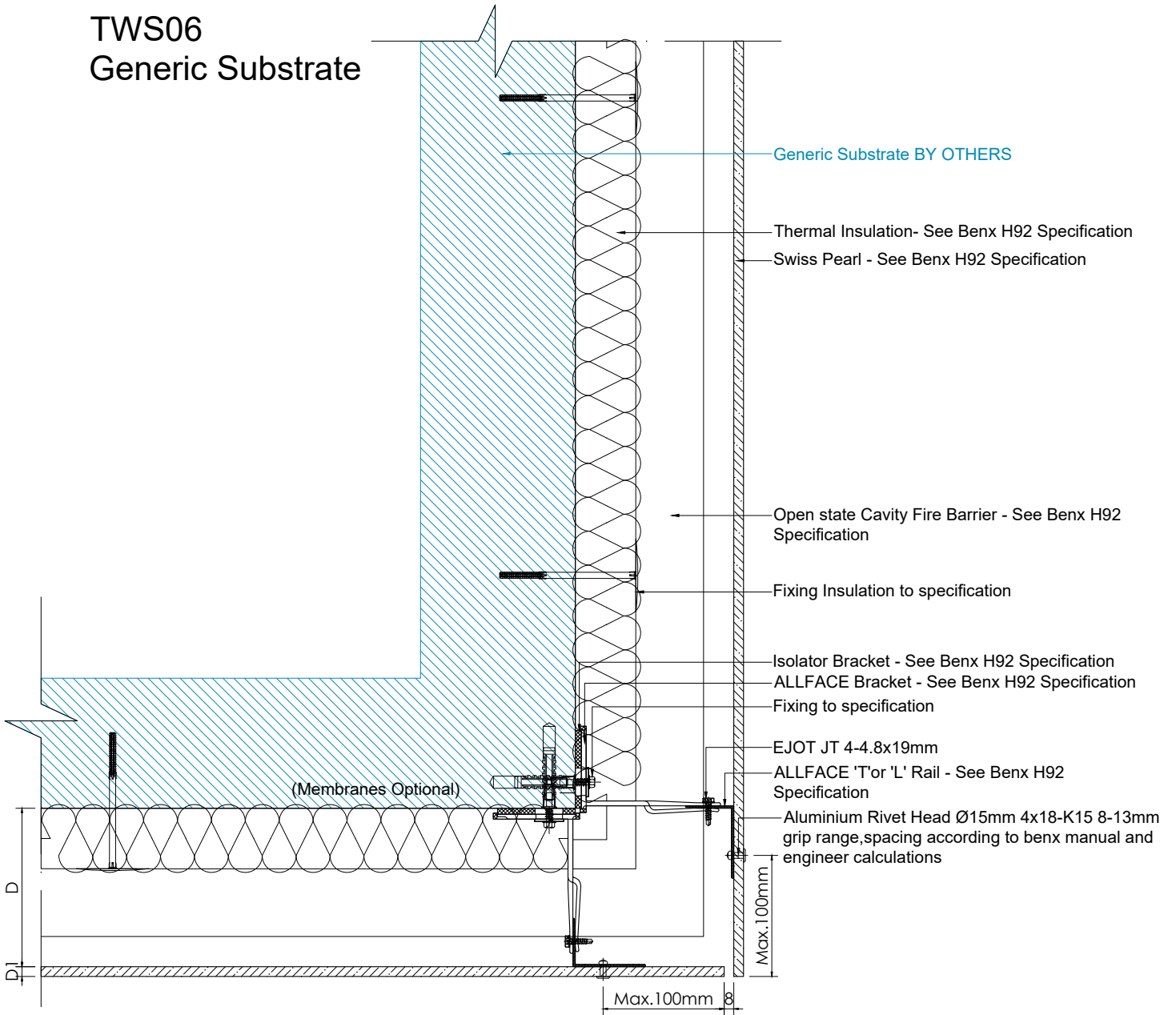


See <https://www.buildingboards.co.uk> for all product's range & information.

All performance data & systems specifications are for systems constructed with materials & components as shown. The inclusion or substitution of any other manufactures materials or components invalidates both test data, system performance and compliance with CDM 2015. The information is provided and based upon details received, which are assumed to include all the relevant facts and data. While it is believed to be correct, we accept no liability for its accuracy, adequacy or completeness. Recipients must satisfy themselves as to its suitability as we do not accept responsibility for any claims or consequential loss. Acceptance of the content and subsequent design responsibility rests entirely with the recipients. Any subsequent design changes that affect the detail which we are not informed of in a written format will void this detail. None of the content may be copied without the prior INFORMATION from the Benx Group Technical Services Department. This statement should be read in conjunction with the standard terms and conditions of Benx Group.


|  |   |  |   |   |   |
|--|---|--|---|---|---|
| <br>  | Unit 26 Rosevale Rd,<br>Parkhouse Ind Est West,<br>Newcastle-under-Lyme,<br>Staffordshire, ST5 7EF,<br>Telephone: 0845 130 0983<br>Email:<br><a href="mailto:technicalservices@benx.co.uk">technicalservices@benx.co.uk</a> |  | REV DATE NOTE BY<br>A AUG21 benx MANUAL REF MT<br>B<br>C<br>D | DRAWING ST: INFORMATION<br>PROJECT: Through Wall Systems 06 SwissPearl ISO No: 0000<br>DRAWING ID: TYPICAL DETAILS DESCRIPTION: INT. CORNER Fixed<br>DRAWING No: TWS06.TDG.0.04 | DRAWN: MT<br>CHECK: NTS@A4<br>DATE: June202<br>REV: B |
|--|---|--|---|---|---|

# TWS06 Generic Substrate

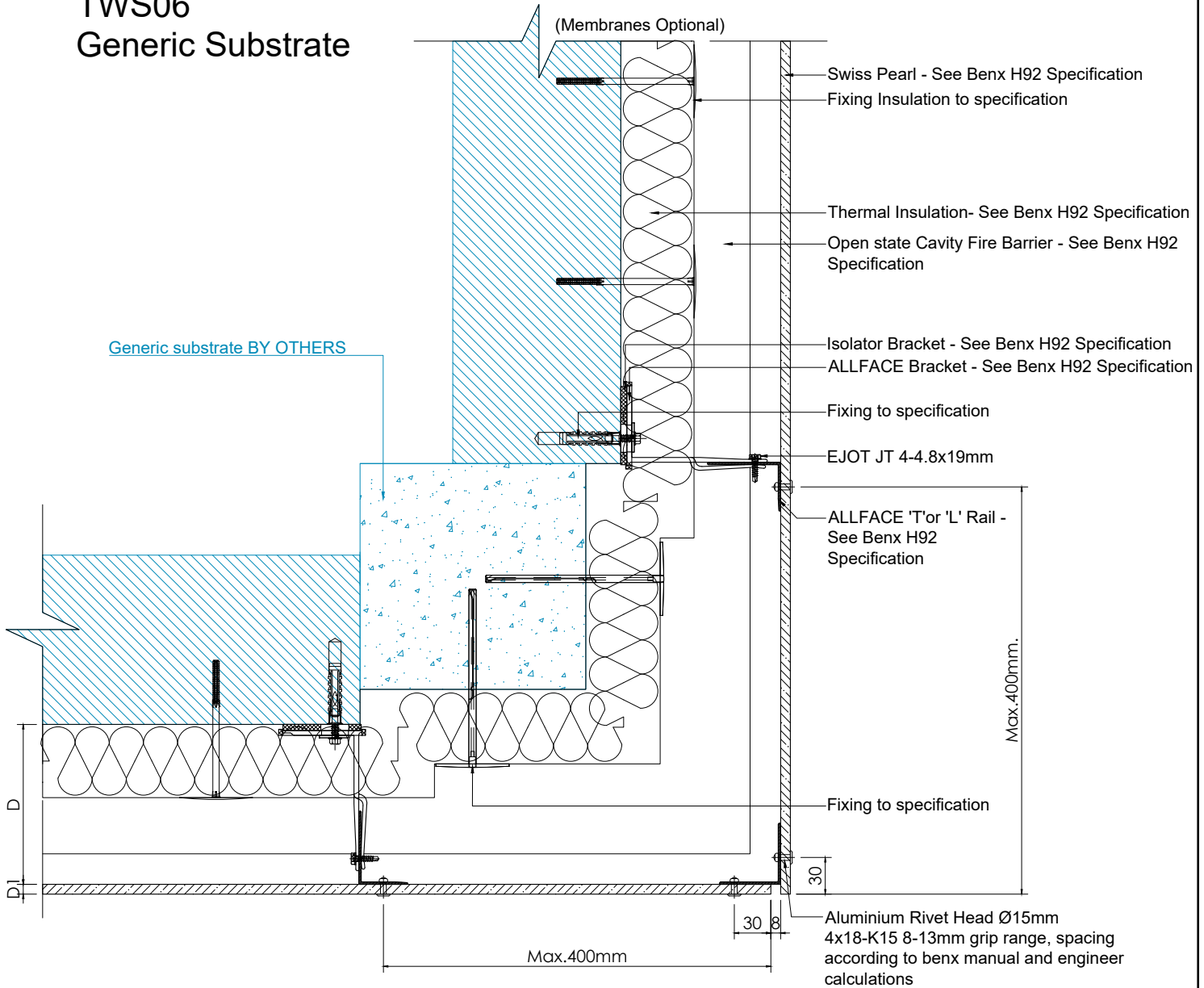


See <https://www.buildingboards.co.uk> for all product's range & information.

All performance data & systems specifications are for systems constructed with materials & components as shown. The inclusion or substitution of any other manufactures materials or components invalidates both test data, system performance and compliance with CDM 2015. The information is provided and based upon details received, which are assumed to include all the relevant facts and data. While it is believed to be correct, we accept no liability for its accuracy, adequacy or completeness. Recipients must satisfy themselves as to its suitability as we do not accept responsibility for any claims or consequential loss. Acceptance of the content and subsequent design responsibility rests entirely with the recipient. Any subsequent design changes that affect the detail which we are not informed of in a written format will void this detail. None of the content may be copied without the prior INFORMATION from the Benx Group Technical Services Department. This statement should be read in conjunction with the standard terms and conditions of Benx Group.


|  |   |  |   |   |   |
|--|---|--|---|---|---|
|  | Unit 26 Rosevale Rd,<br>Parkhouse Ind Est West,<br>Newcastle-under-Lyme,<br>Staffordshire, ST5 7EF,<br>Telephone: 0845 130 0983<br>Email:<br><a href="mailto:technicalservices@benx.co.uk">technicalservices@benx.co.uk</a> |  | REV DATE NOTE<br>A AUG21 benx MANUAL REF<br>B<br>C<br>D | BY DRAWING ST: INFORMATION<br>PROJECT: Through Wall Systems 06 SwissPearl ISO No: 0000<br>DRAWING ID: TYPICAL DETAILS DESCRIPTION: EXT. CORNER Cantilever<br>DRAWING No: TWS06.TDG.0.05 | DRAWN: MT<br>CHECK: NTS@A4<br>DATE: June202<br>REV: B |
|--|---|--|---|---|---|

# TWS06 Generic Substrate

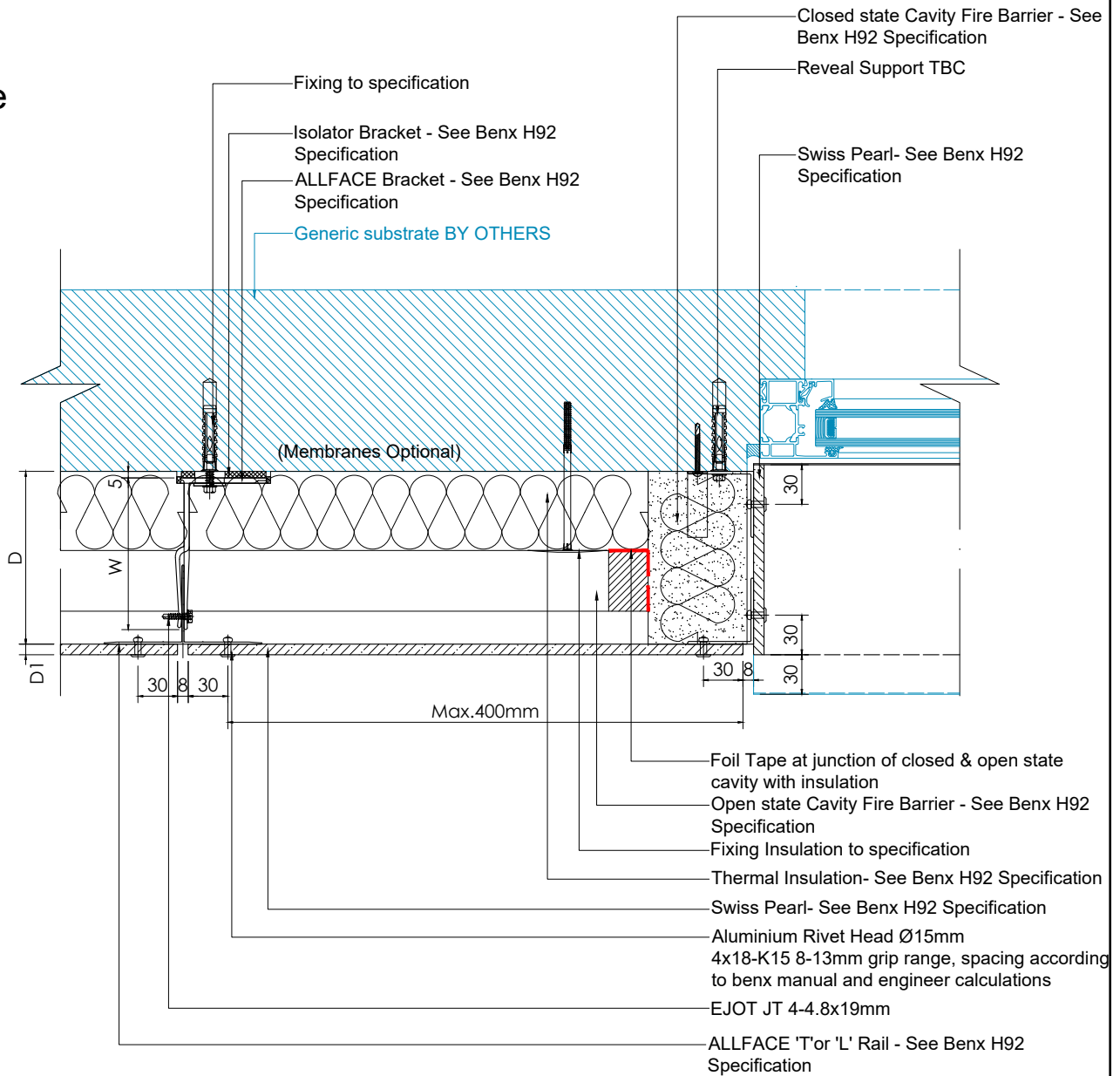


See <https://www.buildingboards.co.uk> for all product's range & information.

All performance data & systems specifications are for systems constructed with materials & components as shown. The inclusion or substitution of any other manufactures materials or components invalidates both test data, system performance and compliance with CDM 2015. The information is provided and based upon details received, which are assumed to include all the relevant facts and data. While it is believed to be correct, we accept no liability for its accuracy, adequacy or completeness. Recipients must satisfy themselves as to its suitability as we do not accept responsibility for any claims or consequential loss. Acceptance of the content and subsequent design responsibility rests entirely with the recipient. Any subsequent design changes that affect the detail which we are not informed of in a written format will void this detail. None of the content may be copied without the prior INFORMATION from the Benx Group Technical Services Department. This statement should be read in conjunction with the standard terms and conditions of Benx Group.




|  |   |  |   |  |   |
|--|---|--|---|--|---|
|  | Unit 26 Rosevale Rd,<br>Parkhouse Ind Est West,<br>Newcastle-under-Lyme,<br>Staffordshire, ST5 7EF,<br>Telephone: 0845 130 0983<br>Email:<br><a href="mailto:technicalservices@benx.co.uk">technicalservices@benx.co.uk</a> |  | REV DATE NOTE<br>A AUG21 benx MANUAL REF<br>B<br>C<br>D | BY DRAWING ST: INFORMATION<br>PROJECT: Through Wall Systems 06 SwissPearl ISO No: 0000<br>DRAWING ID: TYPICAL DETAILS DESCRIPTION: EXT. CORNER Fixed<br>DRAWING No: TWS06.TDG.0.06 | DRAWN: MT<br>CHECK: NTS@A4<br>DATE: June202<br>REV: B |
|--|---|--|---|--|---|

# TWS06 Generic Substrate



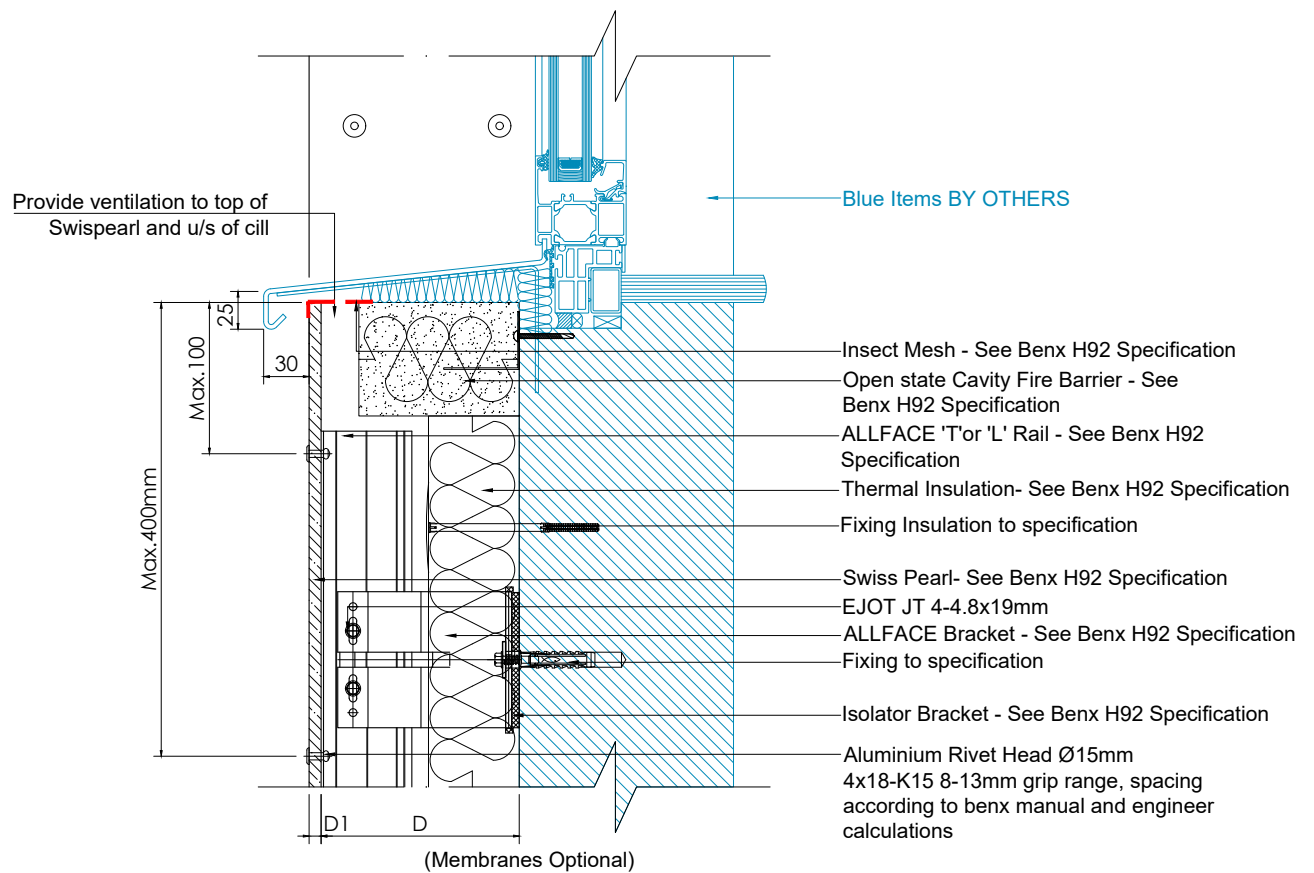
See <https://www.buildingboards.co.uk> for all product's range & information.

All performance data & systems specifications are for systems constructed with materials & components as shown. The inclusion or substitution of any other manufactures materials or components invalidates both test data, system performance and compliance with CDM 2015. The information is provided and based upon details received, which are assumed to include all the relevant facts and data. While it is believed to be correct, we accept no liability for its accuracy, adequacy or completeness. Recipients must satisfy themselves as to its suitability as we do not accept responsibility for any claims or consequential loss. Acceptance of the content and subsequent design responsibility rests entirely with the recipients. Any subsequent design changes that affect the detail which we are not informed of in a written format will void this detail. None of the content may be copied without the prior INFORMATION from the Benx Group Technical Services Department. This statement should be read in conjunction with the standard terms and conditions of Benx Group.

|  |   |  |   |  |  |
|--|---|--|---|--|--|
| <br>  | Unit 26 Rosevale Rd,<br>Parkhouse Ind Est West,<br>Newcastle-under-Lyme,<br>Staffordshire, ST5 7EF,<br>Telephone: 0845 130 0983<br>Email:<br><a href="mailto:technicalservices@benx.co.uk">technicalservices@benx.co.uk</a> |  | REV DATE NOTE<br>A AUG21 benx MANUAL REF<br>B<br>C<br>D | BY DRAWING ST: INFORMATION<br>PROJECT: Through Wall Systems 06 SwissPearl ISO No: 0000<br>DRAWING ID: TYPICAL DETAILS DESCRIPTION: JAMB Detail<br>DRAWING No: TWS06.TDG.0.07 | DRAWN: MT<br>CHECK: NTS@A4<br>DATE: June2022<br>REV: B |
|--|---|--|---|--|--|



# TWS06 Generic Substrate

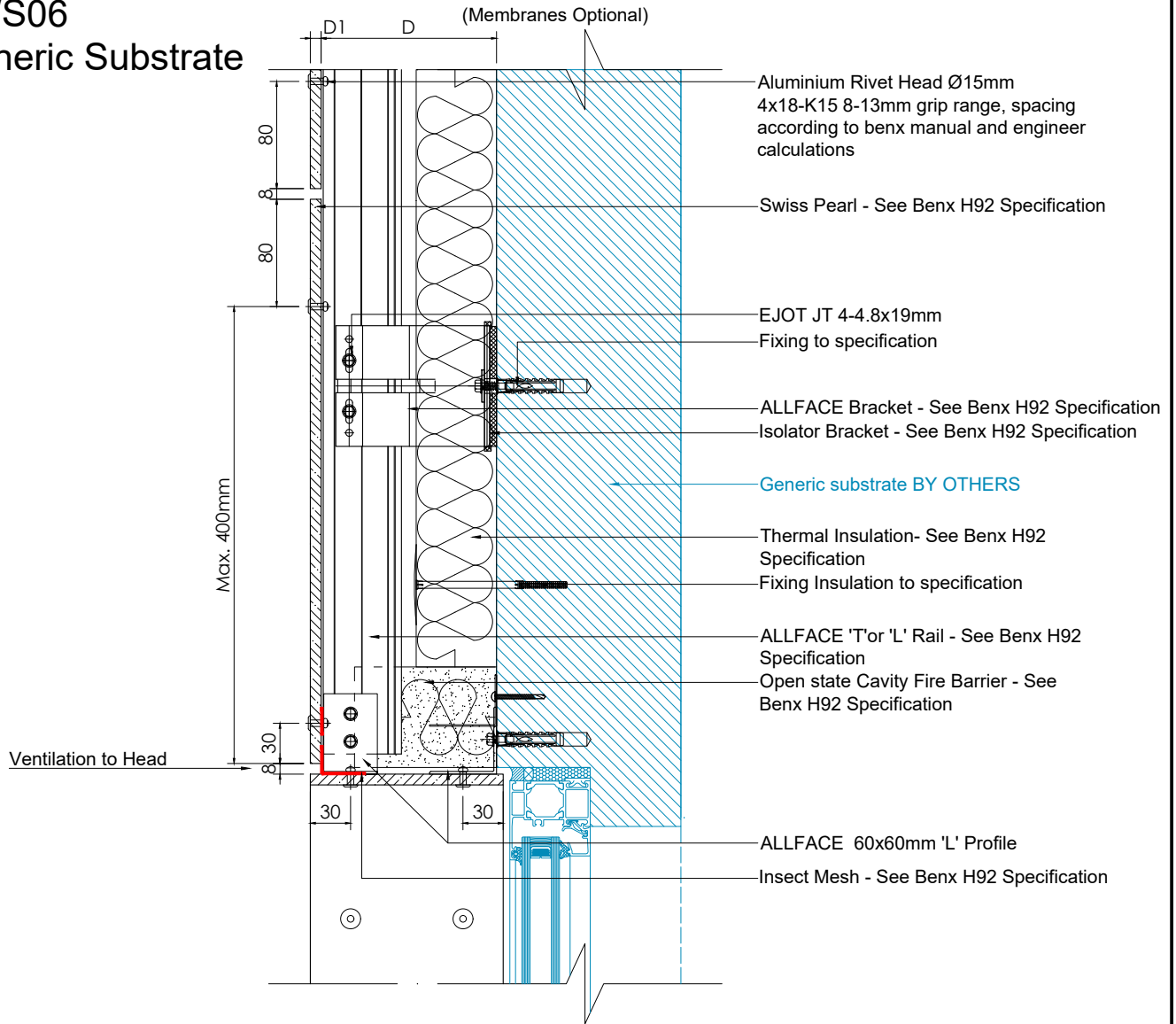


See <https://www.buildingboards.co.uk> for all product's range & information.

All performance data & systems specifications are for systems constructed with materials & components as shown. The inclusion or substitution of any other manufactures materials or components invalidates both test data, system performance and compliance with CDM 2015. The information is provided and based upon details received, which are assumed to include all the relevant facts and data. While it is believed to be correct, we accept no liability for its accuracy, adequacy or completeness. Recipients must satisfy themselves as to its suitability as we do not accept responsibility for any claims or consequential loss. Acceptance of the content and subsequent design responsibility rests entirely with the recipient. Any subsequent design changes that affect the detail which we are not informed of in a written format will void this detail. None of the content may be copied without the prior INFORMATION from the Benx Group Technical Services Department. This statement should be read in conjunction with the standard terms and conditions of Benx Group.




| REV | DATE  | NOTE                    | BY | DRAWING ST: | INFORMATION                        | DRAWN:       |
|-----|-------|-------------------------|----|-------------|------------------------------------|--------------|
| A   | 22/07 | BRACKETS/FIRE EXPANSION | MT | PROJECT:    | Through Wall Systems 06 SwissPearl | ISO No:      |
| B   | AUG21 | benx MANUAL REF         | MT | DRAWING ID: | TYPICAL DETAILS                    | DESCRIPTION: |
| C   |       |                         |    | DRAWING No: | TWS06.TDG.0.08                     | REV:         |
| D   |       |                         |    |             |                                    | B            |

# TWS06 Generic Substrate

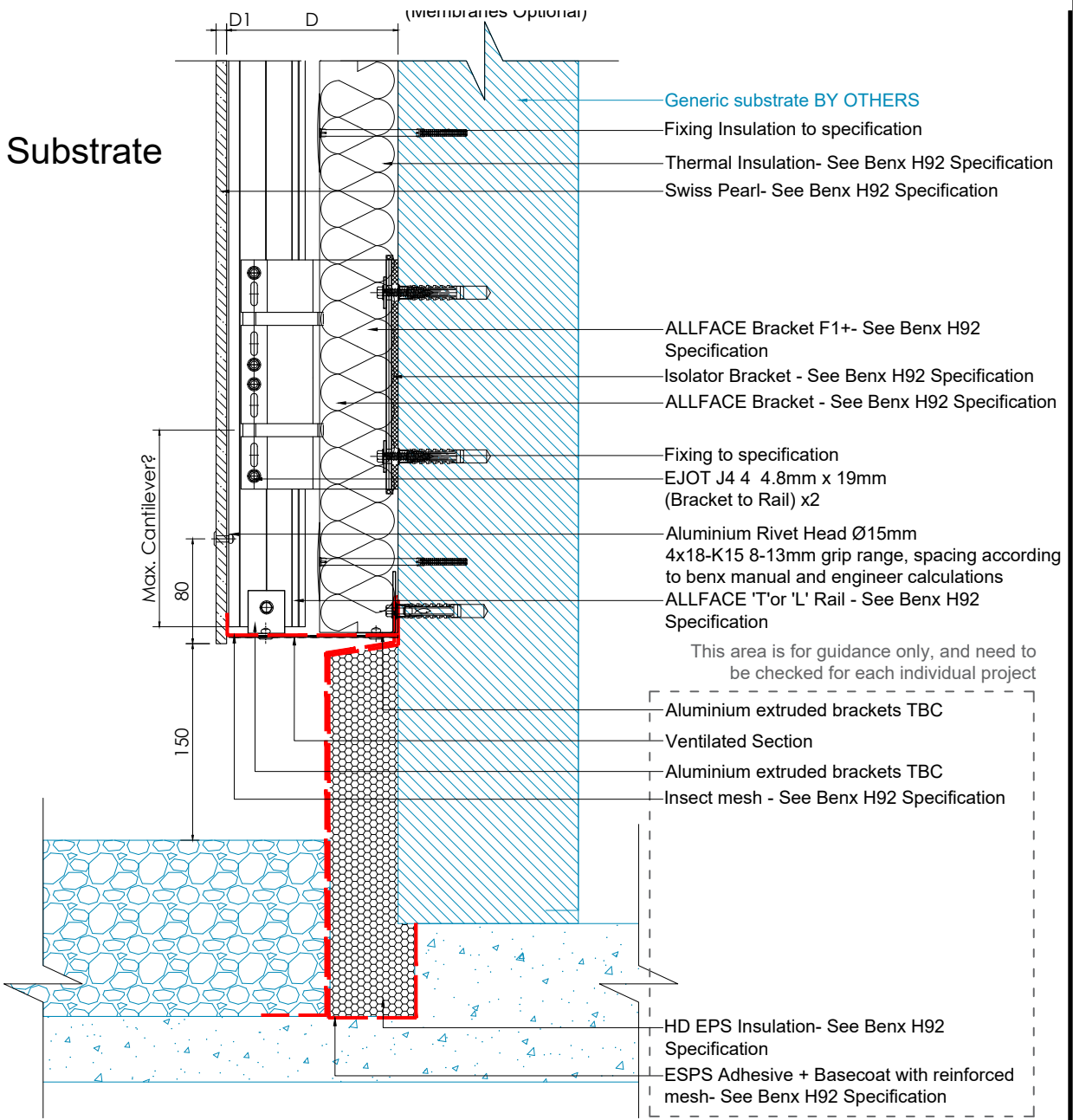


See <https://www.buildingboards.co.uk> for all product's range & information.


All performance data & systems specifications are for systems constructed with materials & components as shown. The inclusion or substitution of any other manufactures materials or components invalidates both test data, system performance and compliance with CDM 2015. The information is provided and based upon details received, which are assumed to include all the relevant facts and data. While it is believed to be correct, we accept no liability for its accuracy, adequacy or completeness. Recipients must satisfy themselves as to its suitability as we do not accept responsibility for any claims or consequential loss. Acceptance of the content and subsequent design responsibility rests entirely with the recipient. Any subsequent design changes that affect the detail which we are not informed of in a written format will void this detail. None of the content may be copied without the prior INFORMATION from the Benx Group Technical Services Department. This statement should be read in conjunction with the standard terms and conditions of Benx Group.

|  |   |  |   |   |   |
|--|---|--|---|---|---|
| <br>  | Unit 26 Rosevale Rd,<br>Parkhouse Ind Est West,<br>Newcastle-under-Lyme,<br>Staffordshire, ST5 7EF,<br>Telephone: 0845 130 0983<br>Email:<br><a href="mailto:technicalservices@benx.co.uk">technicalservices@benx.co.uk</a> |  | REV DATE NOTE<br>A AUG21 benx MANUAL REF<br>B<br>C<br>D | BY MT<br>DRAWING ST: INFORMATION<br>PROJECT: Through Wall Systems 06 SwissPearl ISO No: 0000<br>DRAWING ID: TYPICAL DETAILS DESCRIPTION: WINDOW HEAD DETAIL<br>DRAWING No: TWS06.TDG.0.09 | DRAWN: MT<br>CHECK: NTS@A4<br>DATE: June202<br>REV: B |
|--|---|--|---|---|---|

# TWS06 Generic Substrate



See <https://www.buildingboards.co.uk> for all product's range & information.



**benx**  
group of companies

**sps envirowall**  
TOTAL FACADE SOLUTIONS

**RCM**  
BUILDING BOARDS & FACADES

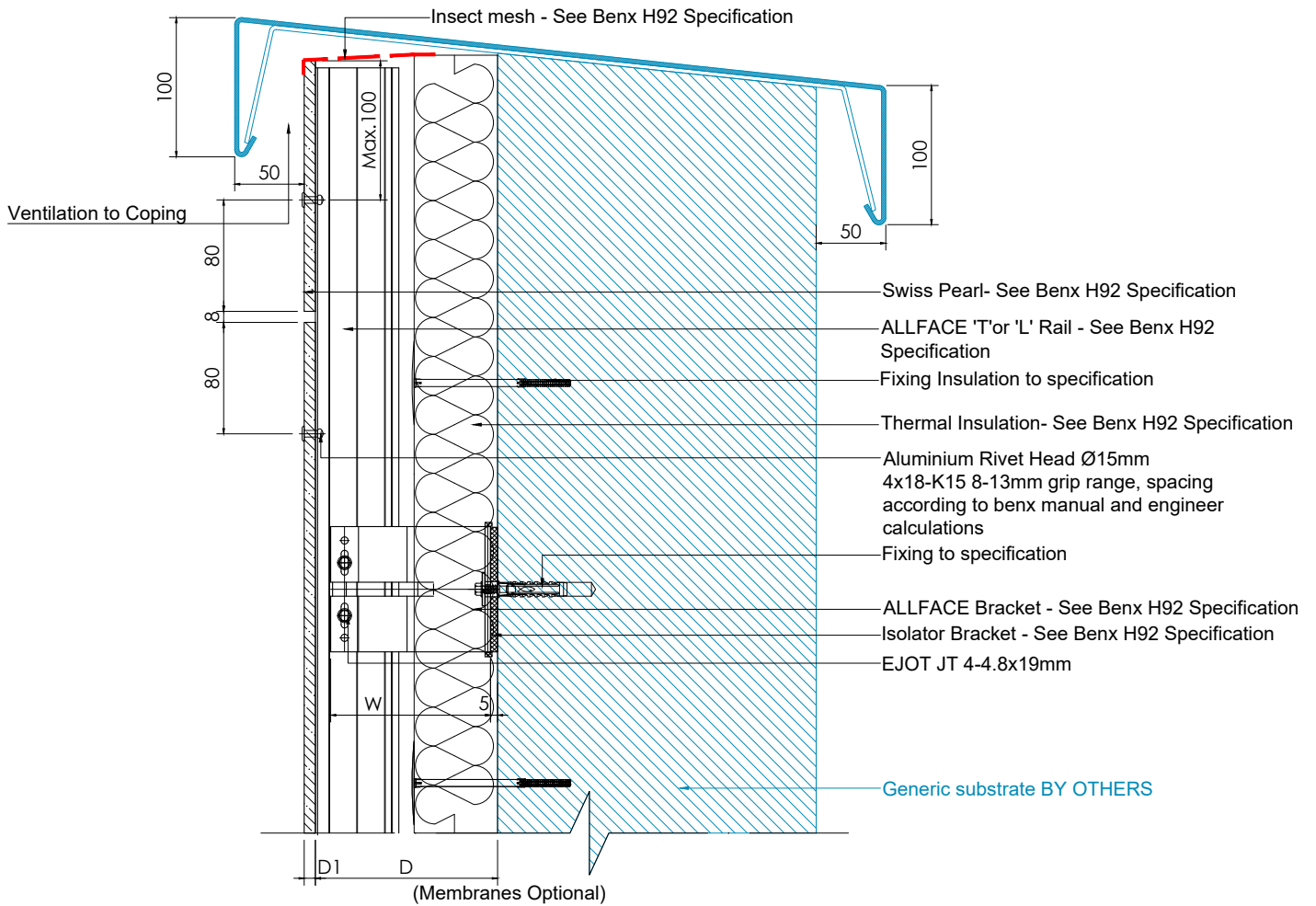
Unit 26 Rosevale Rd,  
Parkhouse Ind Est West,  
Newcastle-under-Lyme,  
Staffordshire, ST5 7EF,  
Telephone: 0845 130 0983

Email:  
[technicalservices@benx.co.uk](mailto:technicalservices@benx.co.uk)

| REV | DATE  | NOTE                    | BY | DRAWING ST: | INFORMATION                         | DRAWN:       |
|-----|-------|-------------------------|----|-------------|-------------------------------------|--------------|
| A   | 22/07 | BRACKETS/FIRE EXPANSION | MT | PROJECT:    | Through Wall Systems 06 Swiss Pearl | ISO No:      |
| B   | AUG21 | benx MANUAL REF         | MT |             |                                     | 0000         |
| C   |       |                         |    | DRAWING ID: | TYPICAL DETAILS                     | DESCRIPTION: |
| D   |       |                         |    |             |                                     | BASE DETAIL  |
|     |       |                         |    | DRAWING No: | TWS06.TDG.0.10                      | REV:         |
|     |       |                         |    |             |                                     | B            |

All performance data & systems specifications are for systems constructed with materials & components as shown. The inclusion or substitution of any other manufactures materials or components invalidates both test data, system performance and compliance with CDM 2015. The information is provided and based upon details received, which are assumed to include all the relevant facts and data. While it is believed to be correct, we accept no liability for its accuracy, adequacy or completeness. Recipients must satisfy themselves as to its suitability as we do not accept responsibility for any claims or consequential loss. Acceptance of the content and subsequent design responsibility rests entirely with the recipient. Any subsequent design changes that affect the detail which we are not informed of in a written format will void the detail. None of the content may be copied without the prior INFORMATION from the Benx Group Technical Services Department. This statement should be read in conjunction with the standard terms and conditions of Benx Group.

# TWS06 Generic Substrate

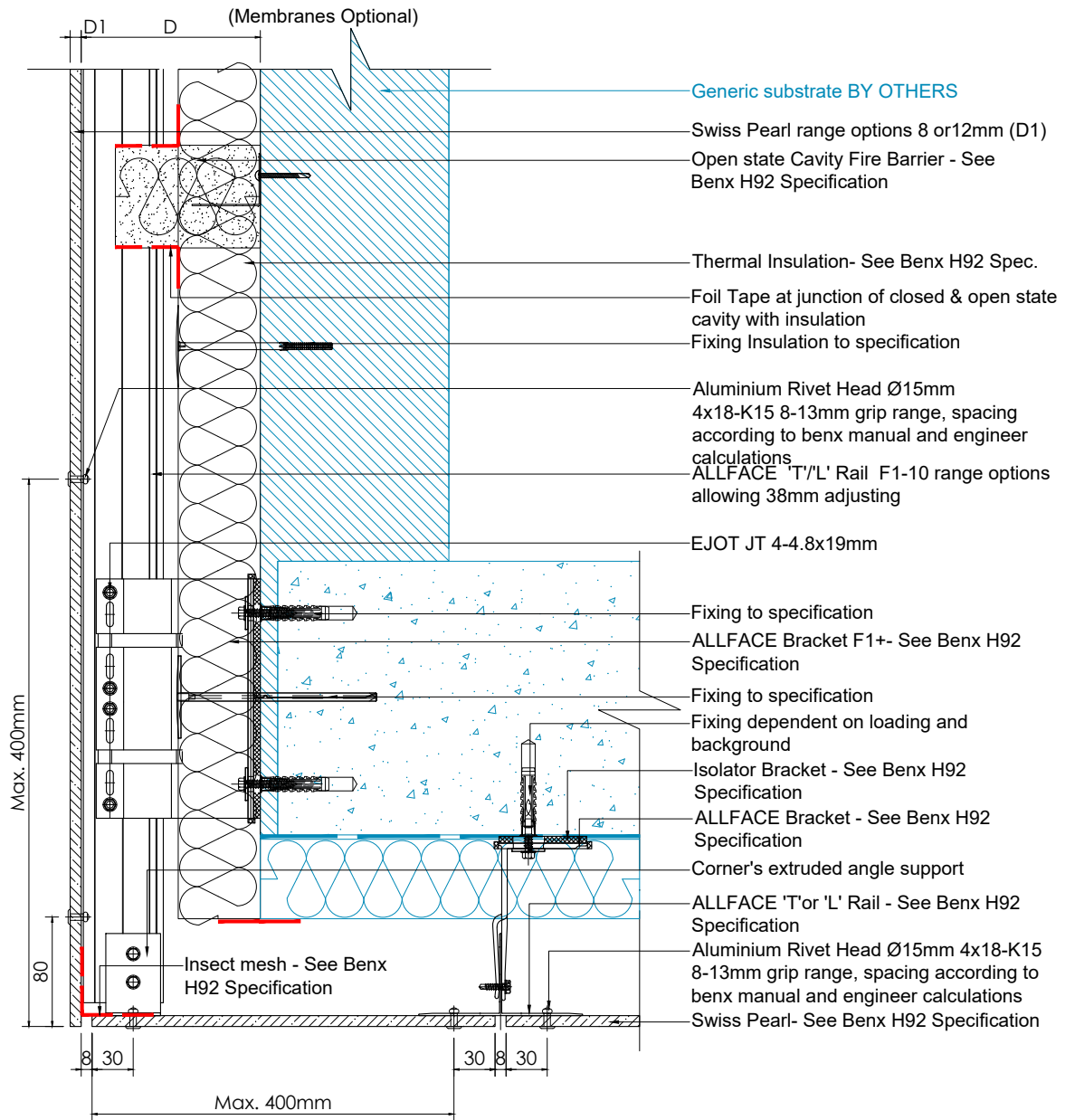


See <https://www.buildingboards.co.uk> for all product's range & information.

All performance data & systems specifications are for systems constructed with materials & components as shown. The inclusion or substitution of any other manufactures materials or components invalidates both test data, system performance and compliance with CDM 2015. The information is provided and based upon details received, which are assumed to include all the relevant facts and data. While it is believed to be correct, we accept no liability for its accuracy, adequacy or completeness. Recipients must satisfy themselves as to its suitability as we do not accept responsibility for any claims or consequential loss. Acceptance of the content and subsequent design responsibility rests entirely with the recipient. Any subsequent design changes that affect the detail which we are not informed of in a written format will void this detail. None of the content may be copied without the prior INFORMATION from the Benx Group Technical Services Department. This statement should be read in conjunction with the standard terms and conditions of Benx Group.




| REV | DATE  | NOTE            | BY | DRAWING ST:  | INFORMATION                        | DRAWN:  |
|-----|-------|-----------------|----|--------------|------------------------------------|---------|
| A   |       |                 |    |              |                                    | MT      |
| B   | AUG21 | benx MANUAL REF | MT | PROJECT:     | Through Wall Systems 06 SwissPearl | CHECK:  |
| C   |       |                 |    |              | ISO No: 0000                       | NTS@A4  |
| D   |       |                 |    | DRAWING ID:  | TYPICAL DETAILS                    | DATE:   |
|     |       |                 |    | DESCRIPTION: | COPING                             | June202 |
|     |       |                 |    | DRAWING No:  | TWS06.TDG.0.11                     | REV:    |
|     |       |                 |    |              |                                    | B       |

# TWS06 Generic Substrate

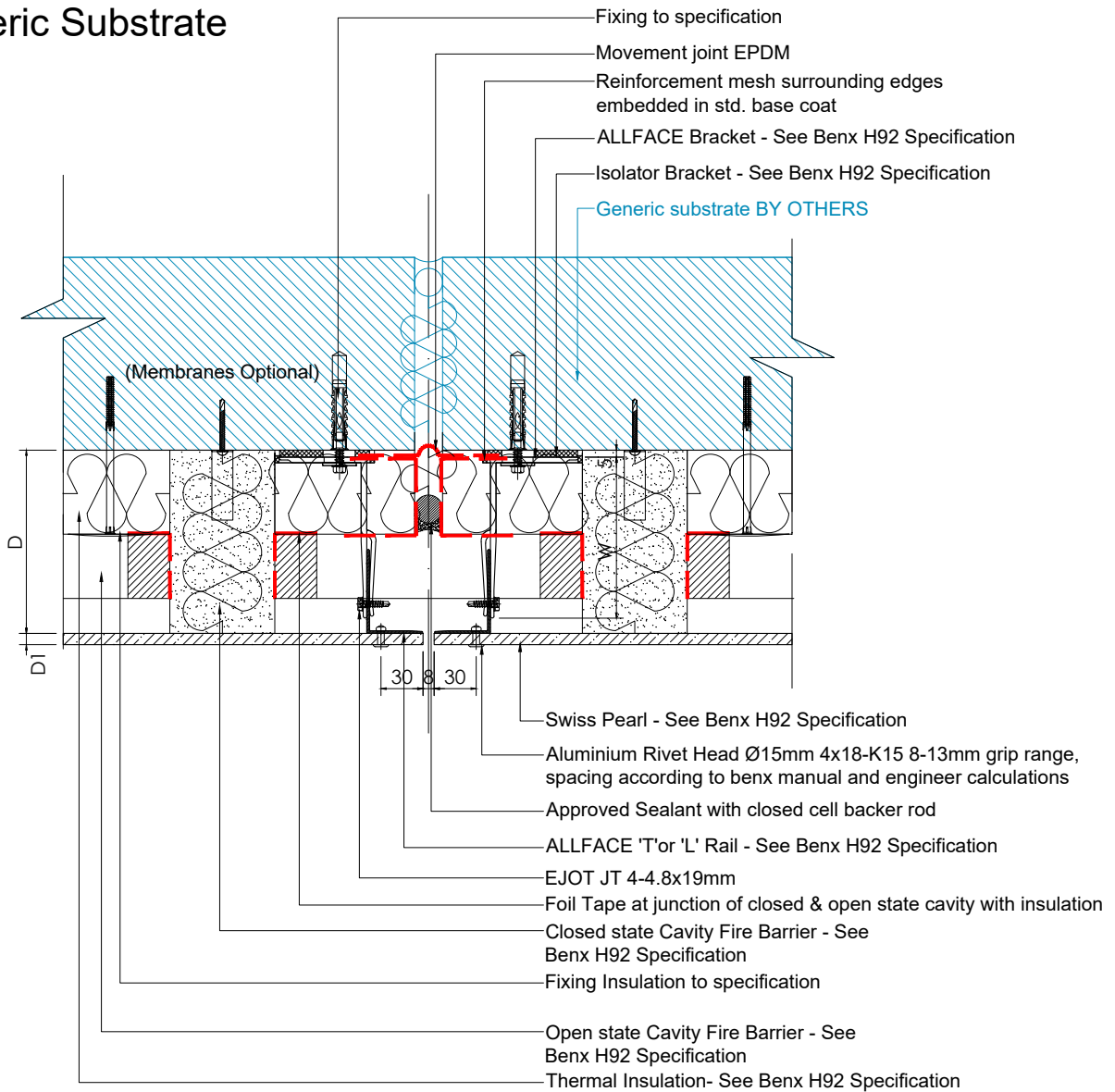


See <https://www.buildingboards.co.uk> for all product's range & information.

All performance data & systems specifications are for systems constructed with materials & components as shown. The inclusion or substitution of any other manufactures materials or components invalidates both test data, system performance and compliance with CDM 2015. The information is provided and based upon details received, which are assumed to include all the relevant facts and data. While it is believed to be correct, we accept no liability for its accuracy, adequacy or completeness. Recipients must satisfy themselves as to its suitability as we do not accept responsibility for any claims or consequential loss. Acceptance of the content and subsequent design responsibility rests entirely with the recipients. Any subsequent design changes that affect the detail which we are not informed of in a written format will void this detail. None of the content may be copied without the prior INFORMATION from the Benx Group Technical Services Department. This statement should be read in conjunction with the standard terms and conditions of Benx Group.


|  |   |  |  |   |   |
|--|---|--|--|---|---|
| <br>  | Unit 26 Rosevale Rd,<br>Parkhouse Ind Est West,<br>Newcastle-under-Lyme,<br>Staffordshire, ST5 7EF,<br>Telephone: 0845 130 0983<br>Email:<br><a href="mailto:technicalservices@benx.co.uk">technicalservices@benx.co.uk</a> |  | REV DATE NOTE BY<br>A 22/07 BRACKETS/FIRE EXPANSION MT<br>B AUG21 benx MANUAL REF MT<br>C<br>D | DRAWING ST: INFORMATION<br>PROJECT: Through Wall Systems 06 SwissPearl ISO No: 0000<br>DRAWING ID: TYPICAL DETAILS DESCRIPTION: SOFFIT DETAIL<br>DRAWING No: TWS06.TDG.0.12 | DRAWN: MT<br>CHECK: NTS@A4<br>DATE: June202<br>REV: B |
|--|---|--|--|---|---|

# TWS06 Generic Substrate

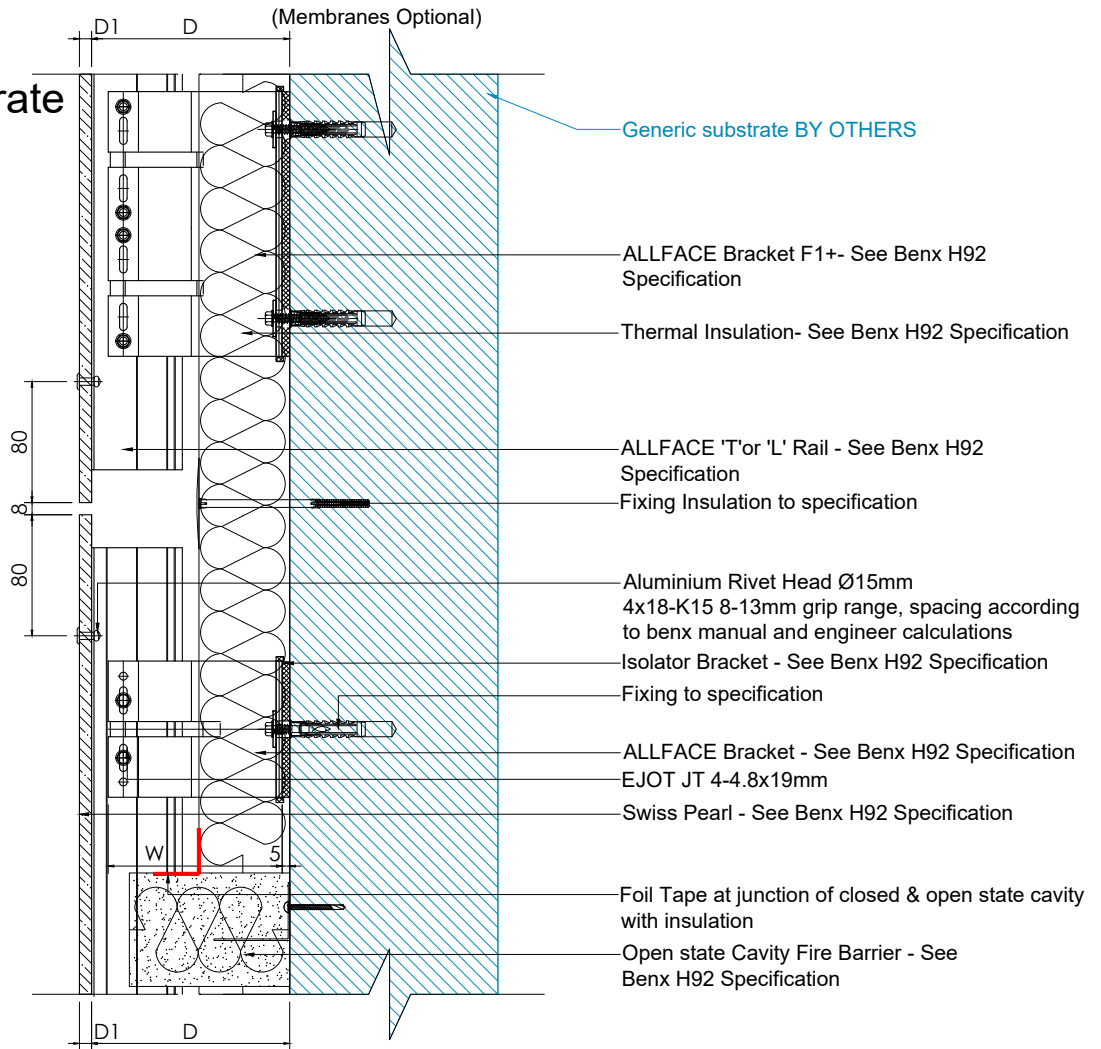


See <https://www.buildingboards.co.uk> for all product's range & information.

All performance data & systems specifications are for systems constructed with materials & components as shown. The inclusion or substitution of any other manufacturers materials or components invalidates both test data, system performance and compliance with CDM 2015. The information is provided and based upon details received, which are assumed to include all the relevant facts and data. While it is believed to be correct, we accept no liability for its accuracy, adequacy or completeness. Recipients must satisfy themselves as to its suitability as we do not accept responsibility for any claims or consequential loss. Acceptance of the content and subsequent design responsibility rests entirely with the recipient. Any subsequent design changes that affect the detail which we are not informed of in a written format will void this detail. None of the content may be copied without the prior INFORMATION from the Benx Group Technical Services Department. This statement should be read in conjunction with the standard terms and conditions of Benx Group.




|  |   |  |   |  |  |
|--|---|--|---|--|--|
|  | Unit 26 Rosevale Rd,<br>Parkhouse Ind Est West,<br>Newcastle-under-Lyme,<br>Staffordshire, ST5 7EF,<br>Telephone: 0845 130 0983<br>Email:<br><a href="mailto:technicalservices@benx.co.uk">technicalservices@benx.co.uk</a> |  | REV DATE NOTE<br>A AUG21 benx MANUAL REF<br>B<br>C<br>D | BY DRAWING ST: INFORMATION<br>PROJECT: Through Wall Systems 06 SwissPearl ISO No: 0000<br>DRAWING ID: TYPICAL DETAILS DESCRIPTION: Movement Joint Vertical<br>DRAWING No: TWS06.TDG.0.13 | DRAWN: MT<br>CHECK: NTS@A4<br>DATE: June2022<br>REV: B |
|--|---|--|---|--|--|

# TWS06 Generic Substrate



See <https://www.buildingboards.co.uk> for all product's range & information.

All performance data & systems specifications are for systems constructed with materials & components as shown. The inclusion or substitution of any other manufactures materials or components invalidates both test data, system performance and compliance with CDM 2015. The information is provided and based upon details received, which are assumed to include all the relevant facts and data. While it is believed to be correct, we accept no liability for its accuracy, adequacy or completeness. Recipients must satisfy themselves as to its suitability as we do not accept responsibility for any claims or consequential loss. Acceptance of the content and subsequent design responsibility rests entirely with the recipients. Any subsequent design changes that affect the detail which we are not informed of in a written format will void this detail. None of the content may be copied without the prior INFORMATION from the Benx Group Technical Services Department. This statement should be read in conjunction with the standard terms and conditions of Benx Group.

|  |   |  |  |   |  |
|--|---|--|--|---|--|
| <br>  | Unit 26 Rosevale Rd,<br>Parkhouse Ind Est West,<br>Newcastle-under-Lyme,<br>Staffordshire, ST5 7EF,<br>Telephone: 0845 130 0983<br>Email:<br><a href="mailto:technicalservices@benx.co.uk">technicalservices@benx.co.uk</a> |  | REV DATE NOTE BY<br>A 22/07 BRACKETS/FIRE EXPANSION MT<br>B AUG21 benx MANUAL REF MT<br>C<br>D | DRAWING ST: INFORMATION<br>PROJECT: Through Wall Systems 06 SwissPearl ISO No: 0000<br>DRAWING ID: TYPICAL DETAILS DESCRIPTION: Movement Joint Horizontal<br>DRAWING No: TWS06.TDG.0.14 | DRAWN: MT<br>CHECK: NTS@A4<br>DATE: June2022<br>REV: B |
|--|---|--|--|---|--|