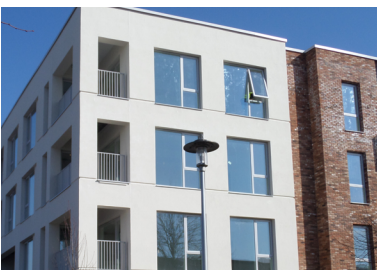




Marina Gardens

Client: Woodman Brothers • System: TS Rail • Material: EPS, Silicone Render
Sector: Residential • Build Type: New Build

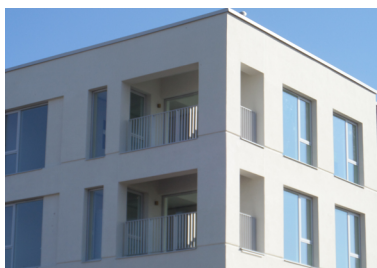


The Marina Gardens landmark development in Portishead provides 126 one and two bedroom homes across 6 blocks in the heart of the regenerated historic quayside district.

The development includes communal facilities for retired residents with a spa, gym, treatment rooms, lounge café, hobby room, laundry and a wellness area.



Marina Gardens has been built using SPSenvirowall's TS Rail System utilising 230mm and 90mm EPS and our decorative and protective silicone topcoat finish colour WH76 from our extensive range.



The SPSenvirowall TS Rail system provides an installer friendly solution which has been full scale fire tested for use on buildings over 18 meters and can be used in conjunction with a wide range of façade finishes.

CO2 emissions. This versatile BBA certificated system is ideal for use in new build applications of all types.

The aesthetics provide the building with a modern and superior finish whilst reflecting the maritime surroundings of the local historic landscape.

Key Benefits of TS Rail System:

- Fire rated options from A2-s1 do to B-s1 do (dependent on the system)
- EPS system tested to BS 8414
- Systems available for both LSF and Timber Frame, BBA Certified
- Options for compliance with building guarantee companies
- Supports a high level of acoustic performance in through wall construction
- Brick and render options available
- Excellent u-values achievable down to 0.11 W/m²k

This system provided an exceptional u-value calculation of up to 0.12W/m²k on this development, contributing to reduced energy consumption and

CPD events available

For those interested in finding out more, we provide informative RIBA accredited CPD sessions.



To book a CPD sessions, please call: 01782 367600



0800 612 4662



sales@benx.co.uk



benx.co.uk