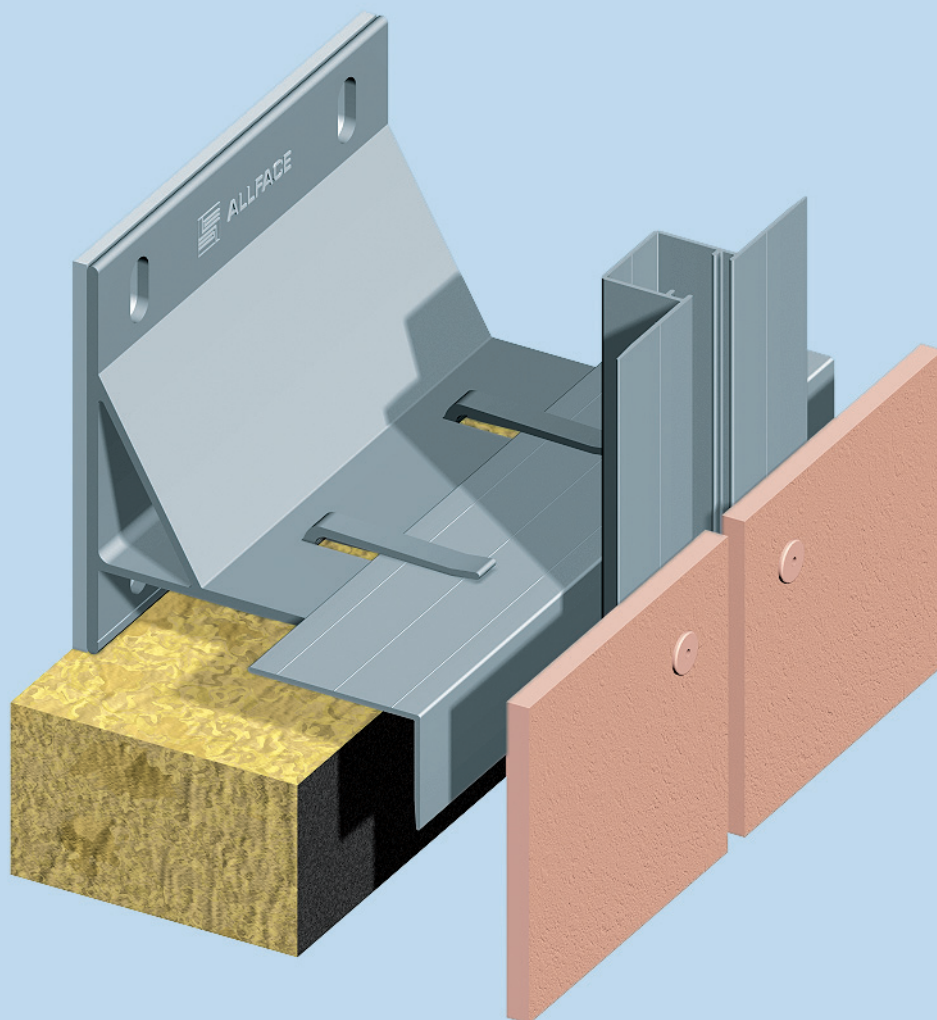


# SYSTEM F2.10

Aluminium-Unterkonstruktion für  
Vorgehängte hinterlüftete Fassaden

aluminum-substructure for  
rainscreen cladding



	Einheiten units	Seite page
Inhaltsverzeichnis/contens		00
<u>Massive Wand /massive wall</u>		
Übersicht / overview	inch	14
Konstruktionstiefe (Tabelle) / construction depth (table)	inch	15
Horizontalschnitt / horizontal section	inch	16
Horizontalschnitt Innenecke / horizontal section -internal corner	inch	17
Horizontalschnitt Fensterdetail / horizontal section- window detail	inch	18
Vertikalschnitt / vertical section	inch	19
Horizontalschnitt Aussenecke / horizontal section -external corner	inch	20
Vertikalschnitt Profilverbindung / vertical section- joint of profile	inch	21
Vertikalschnitt Fensterdetail / vertical section-window detail	inch	22
Vertikalschnitt Fensterdetail / vertical section-window detail	inch	23
Vertikalschnitt Attikadetail / vertical section- parapet detail	inch	24
Vertikalschnitt Sockeldetail / vertical section- bottom detail	inch	25
Horizontalschnitt Aussenecke / horizontal section -external corner	inch	26

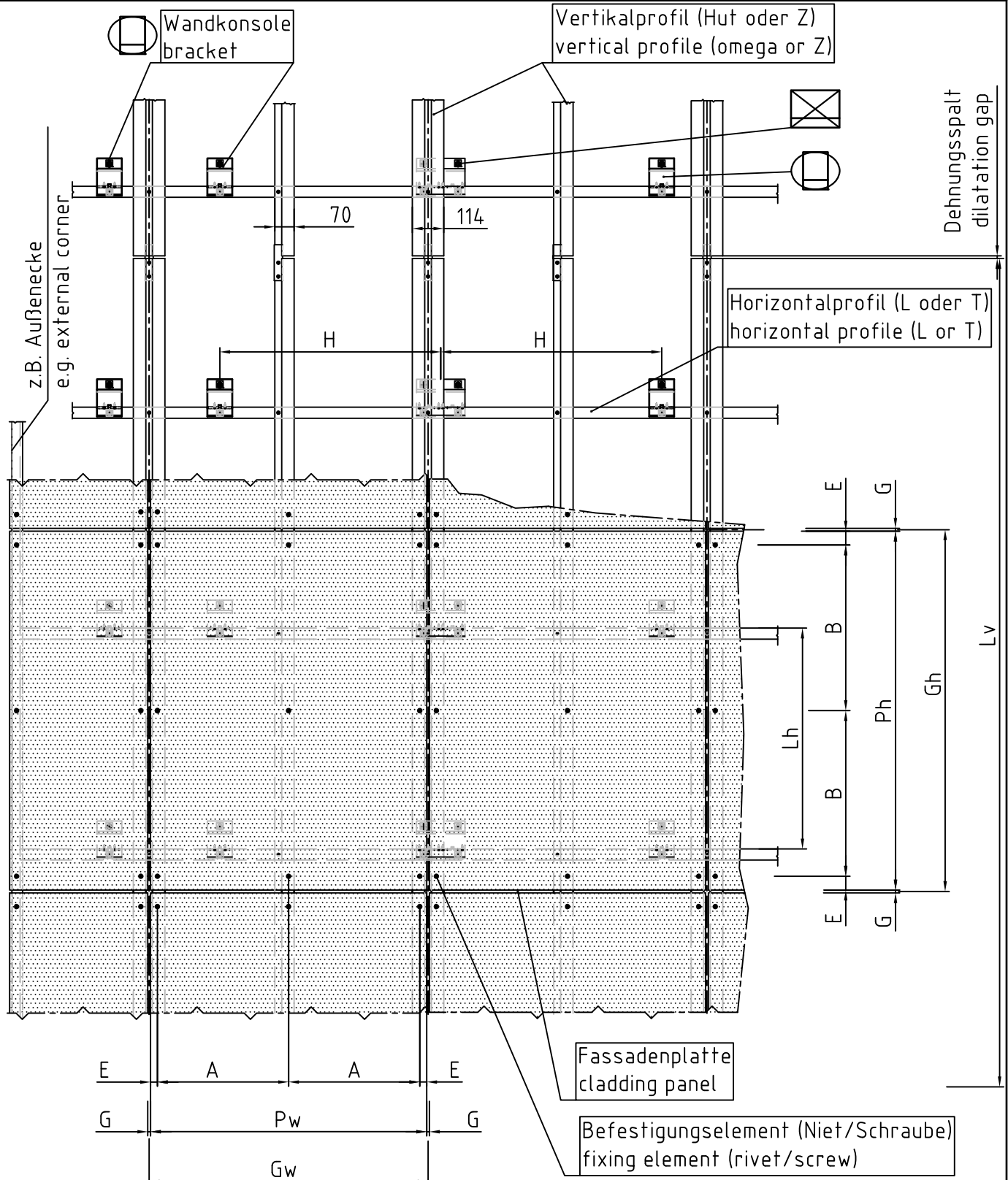
Hinweise: Die Ausführung der dargestellten Verbindungsmittel kann wahlweise als Blechschraube ( $\phi$  4,8x19) oder Niete ( $\phi$  5, Alu/NIRO oder NIRO/NIRO) erfolgen.

Fußnote 1): Die Breite des Hinterlüftungsspalt es ist u.a. von den örtlichen Baubestimmungen bzw. den objektspezifischenbauphysikalischen Anforderungen abhängig.





note: The realisation of the pictured fasteners can be carried out alternatively as tapping screw ( $\phi$  4,8x19) or rivet ( $\phi$  5 aluminium/stainless steel or stainl.steel/stainl.steel) .

footnote 1): The width of the ventilation area depends on local building specifications (standards) and object specific physical requirements.

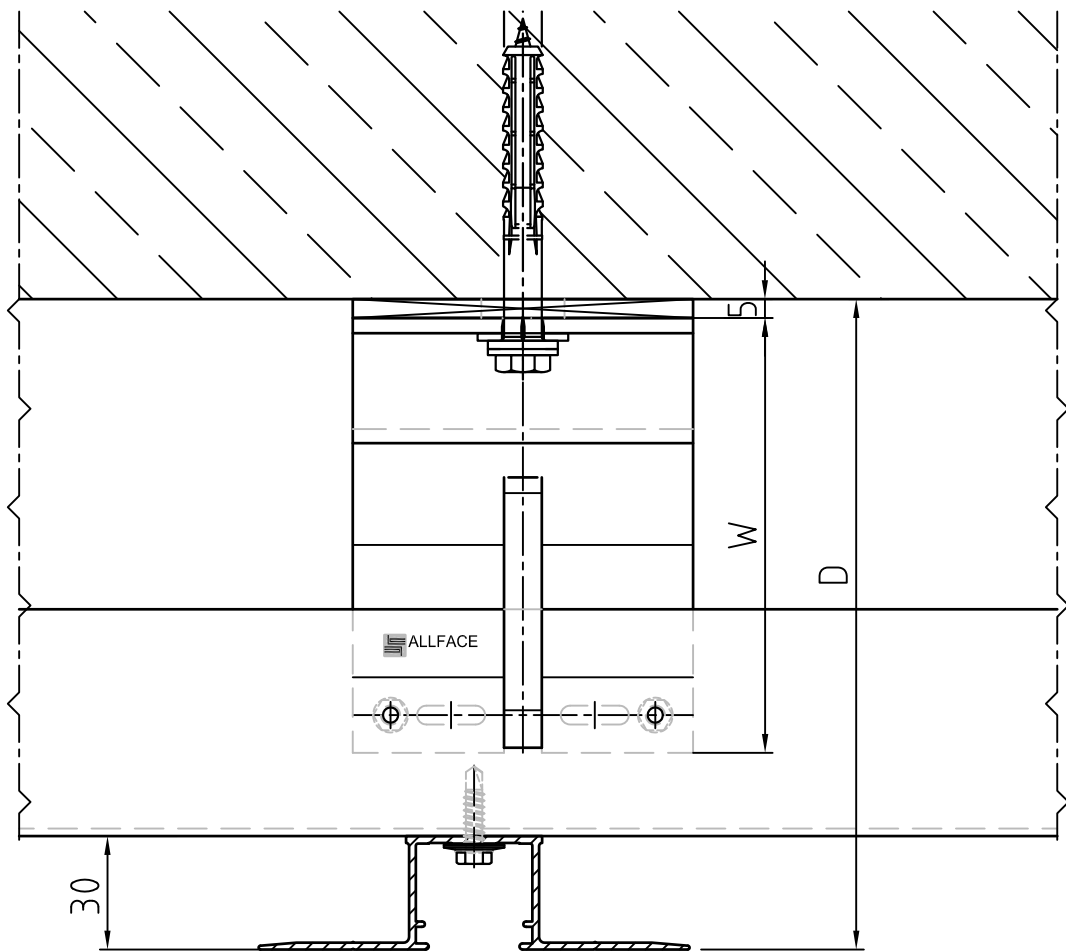
# Übersicht overview System F2.10



## Legende / Legend

- |  |   |  |
|--|---|--|
| A.....Plattenbefestigungsabstand<br>panel fixing distance                    | Gw...Rasterbreite<br>horizontal grid distance                         |  Konsole F2+ als Festpunkt<br>bracket F2+ used as fixed point                             |
| B.....Plattenbefestigungsabstand<br>panel fixing distance                    | Lv...Profillänge (ca. 3m)<br>length of profile (approx. 3m/120")      |  Konsole F2+ als horizontaler Gleitpunkt<br>bracket F2+ used as horizontal flexible point |
| E.....Randabstand der Befestigungsmittel<br>edge distance of fixing elements | Ph...Plattenhöhe<br>panel height                                      |  Konsole F2 als Festpunkt<br>bracket F2 used as fixed point                               |
| G.....Spaltbreite (zwischen den Platten)<br>gap distance (between panels)    | Pw...Plattenbreite<br>panel width                                     |  Konsole F2 als horizontaler Gleitpunkt<br>bracket F2 used as horizontal flexible point   |
| Gh...Rasterhöhe<br>vertical grid distance                                    | H.....horizontaler Wandkonsolenabstand<br>horizontal bracket distance |  |
|  | Lh...vertikaler Profilabstand<br>vertical profile distance            |  |

Konstruktionstiefe  
construction depth  
System F2.10



Maßstab/Scale 1:2

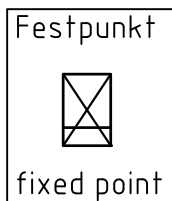
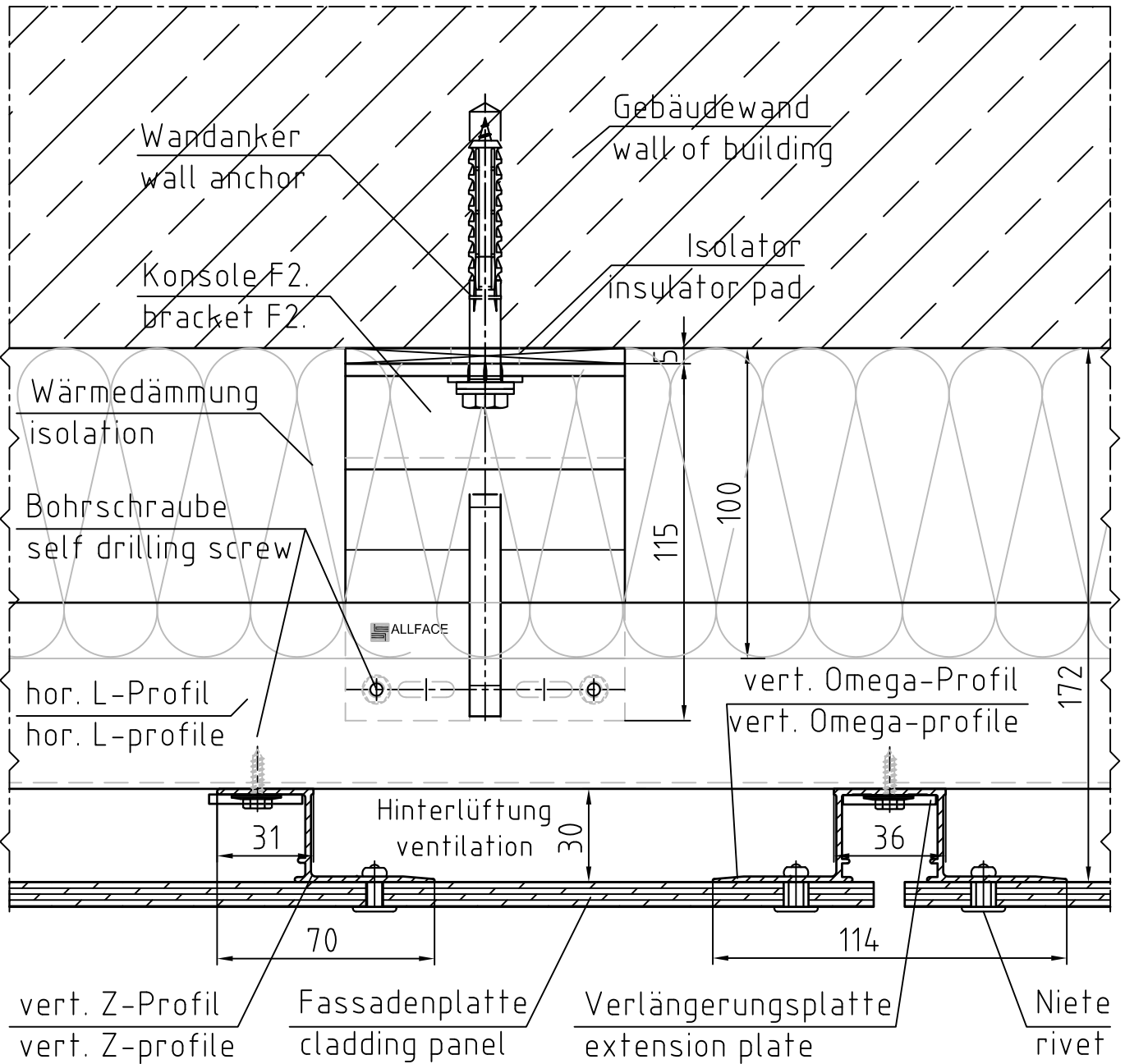
Masstabelle/ Table of Distances

Wandkonsole/bracket F2	Wandkonsole/ bracket F2+	Ausladung/ depth "W"	Entfernung/ distance "D"
F2.35	F2+35	35mm	79mm*)- 113mm
F2.50	F2+50	50mm	87mm*)- 125mm
F2.80	F2+80	80mm	117mm - 155mm
F2.100	F2+100	100mm	137mm - 175mm
F2.115	F2+115	115mm	152mm - 190mm
F2.135	F2+135	135mm	172mm - 210mm
F2.150	F2+150	150mm	187mm - 225mm
F2.170	F2.170	170mm	207mm - 245mm
F2.185	F2+185	185mm	222mm - 260mm
F2.200	F2+200	200mm	237mm - 275mm
F2.220	F2+220	220mm	257mm - 295mm
F2.255	F2+255	255mm	292mm - 330mm

\*)Diese Maße können nur mit Horizontalprofilen mit geringerer Schenkellänge erreicht werden.

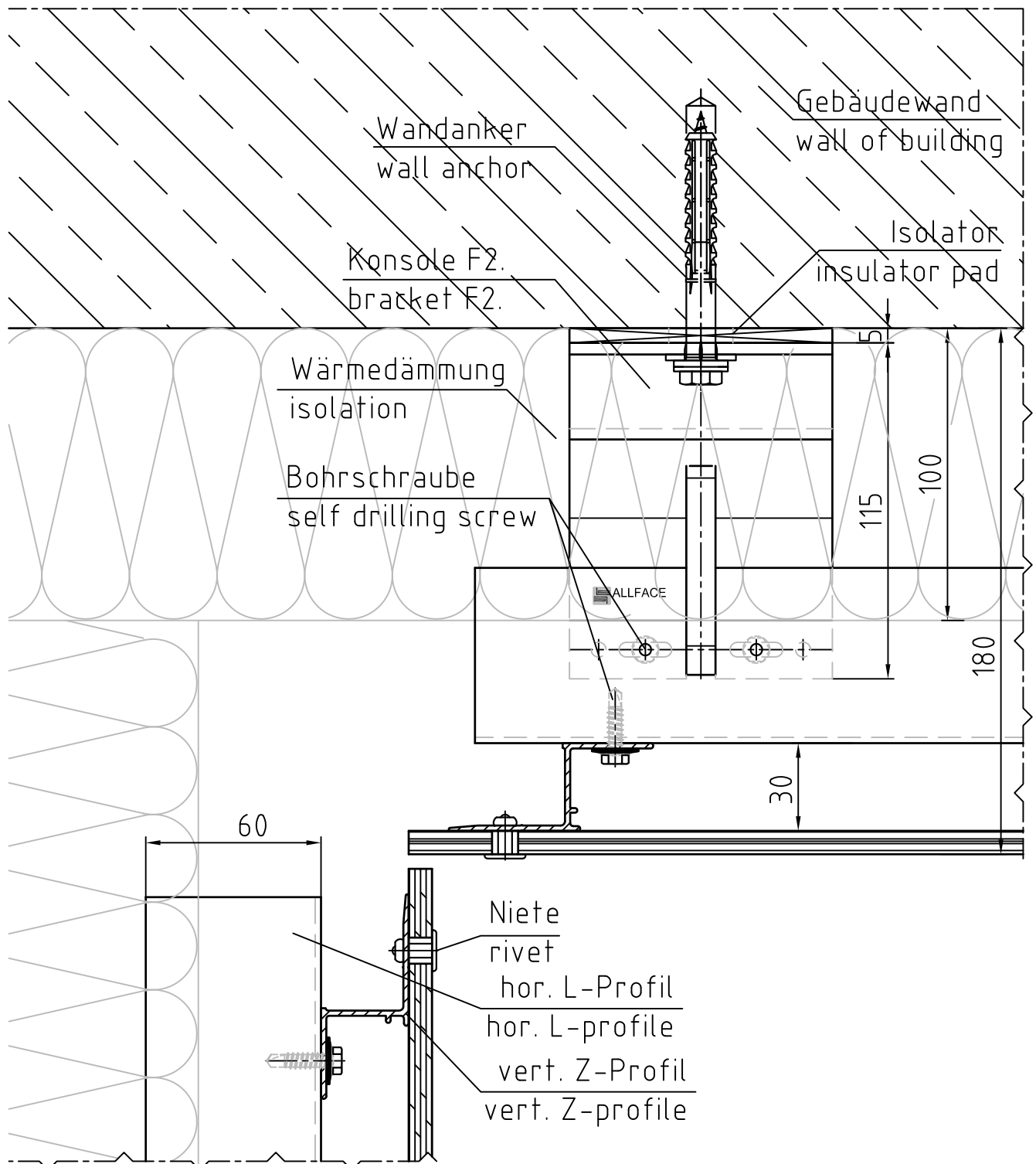
\*)These distances can only be obtained by using horiz. profiles with shorter flange length.

Horizontalschnitt  
horizontal section  
System F2.10



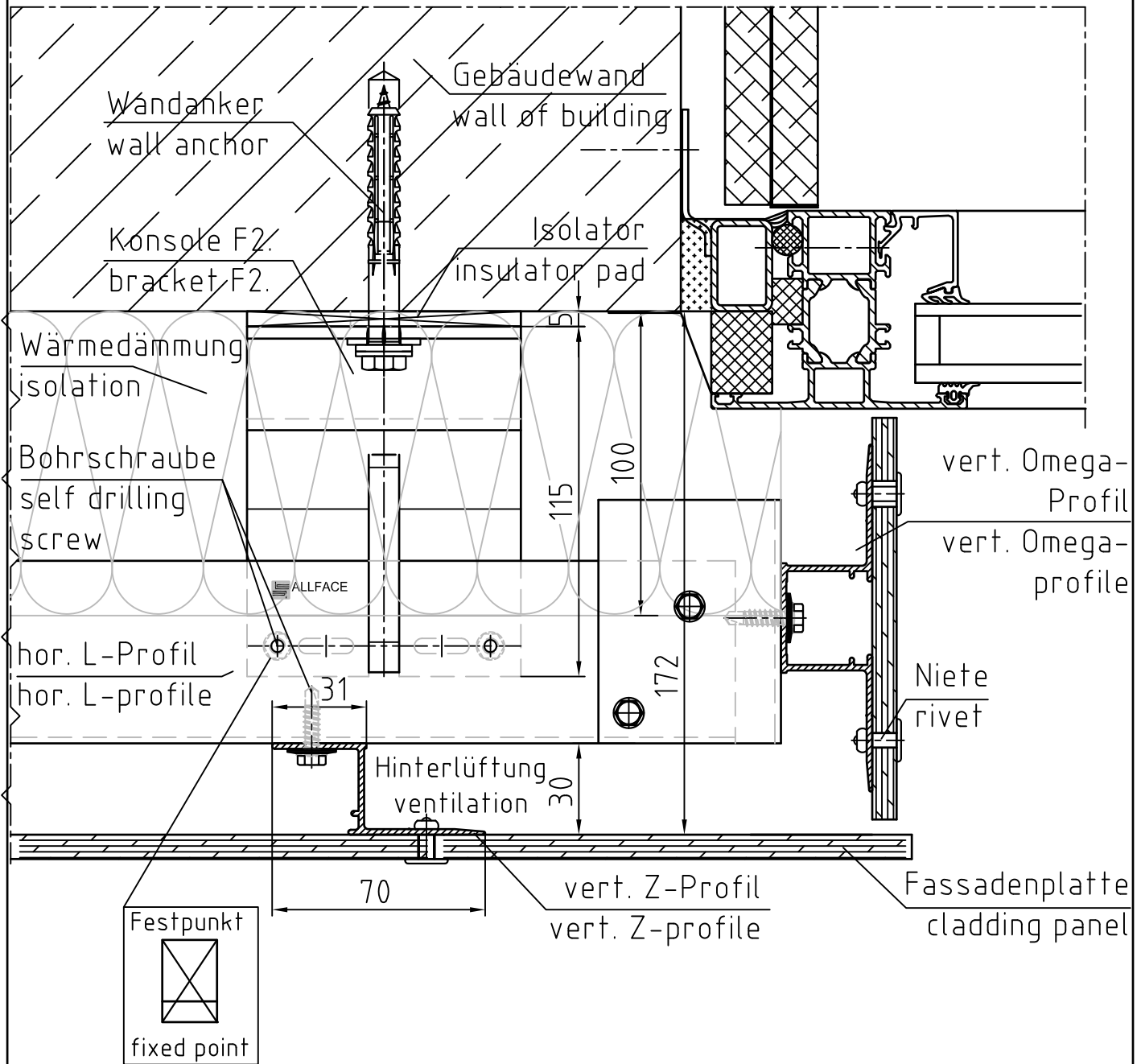
Maßstab/Scale 1:2

Horizontalschnitt Innenecke  
horizontal section internal corner  
System F2.10



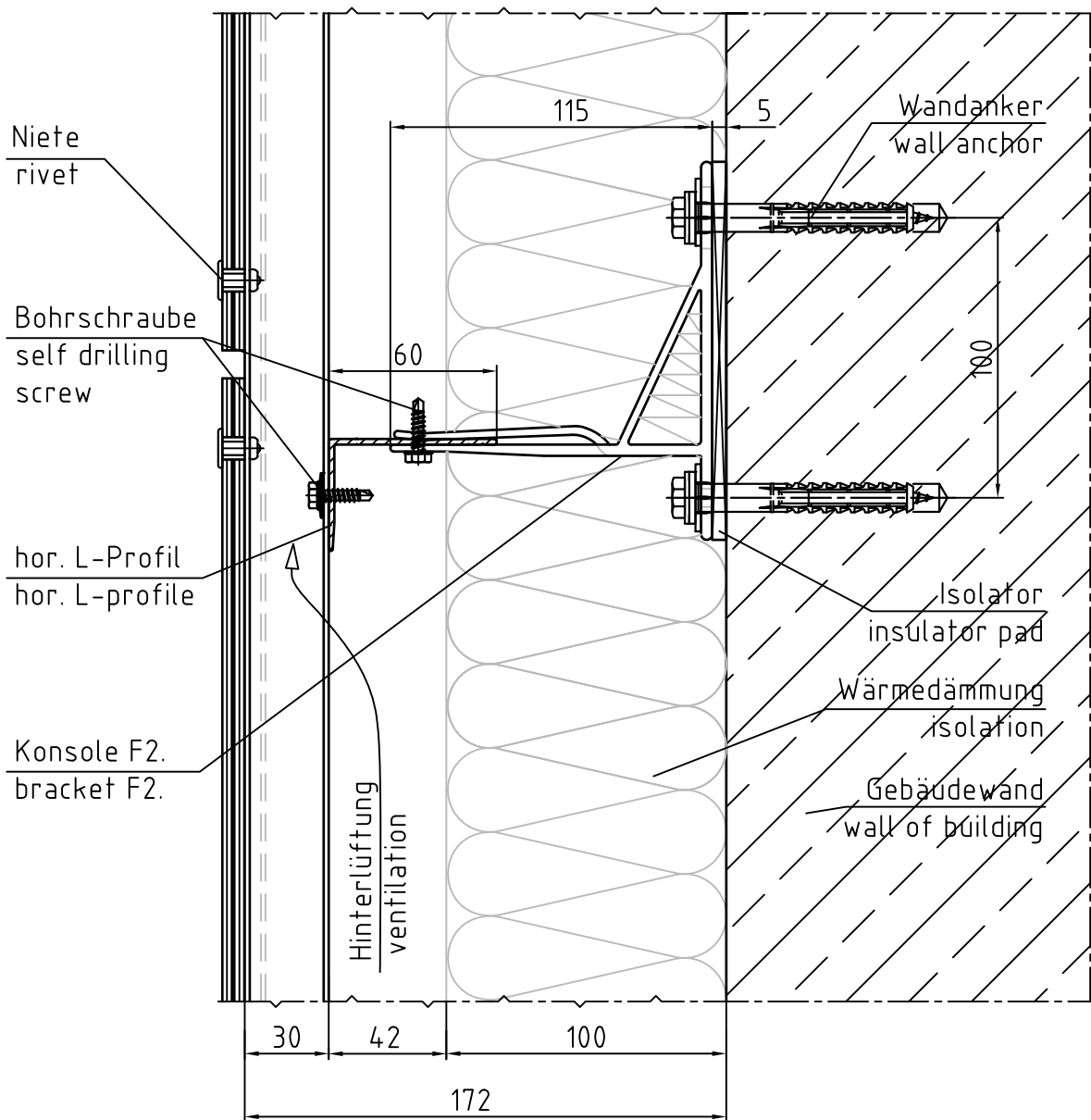
Maßstab/Scale 1:2

Horizontalschnitt Fensterdetail  
horizontal section window detail  
System F2.10



Maßstab/Scale 1:2

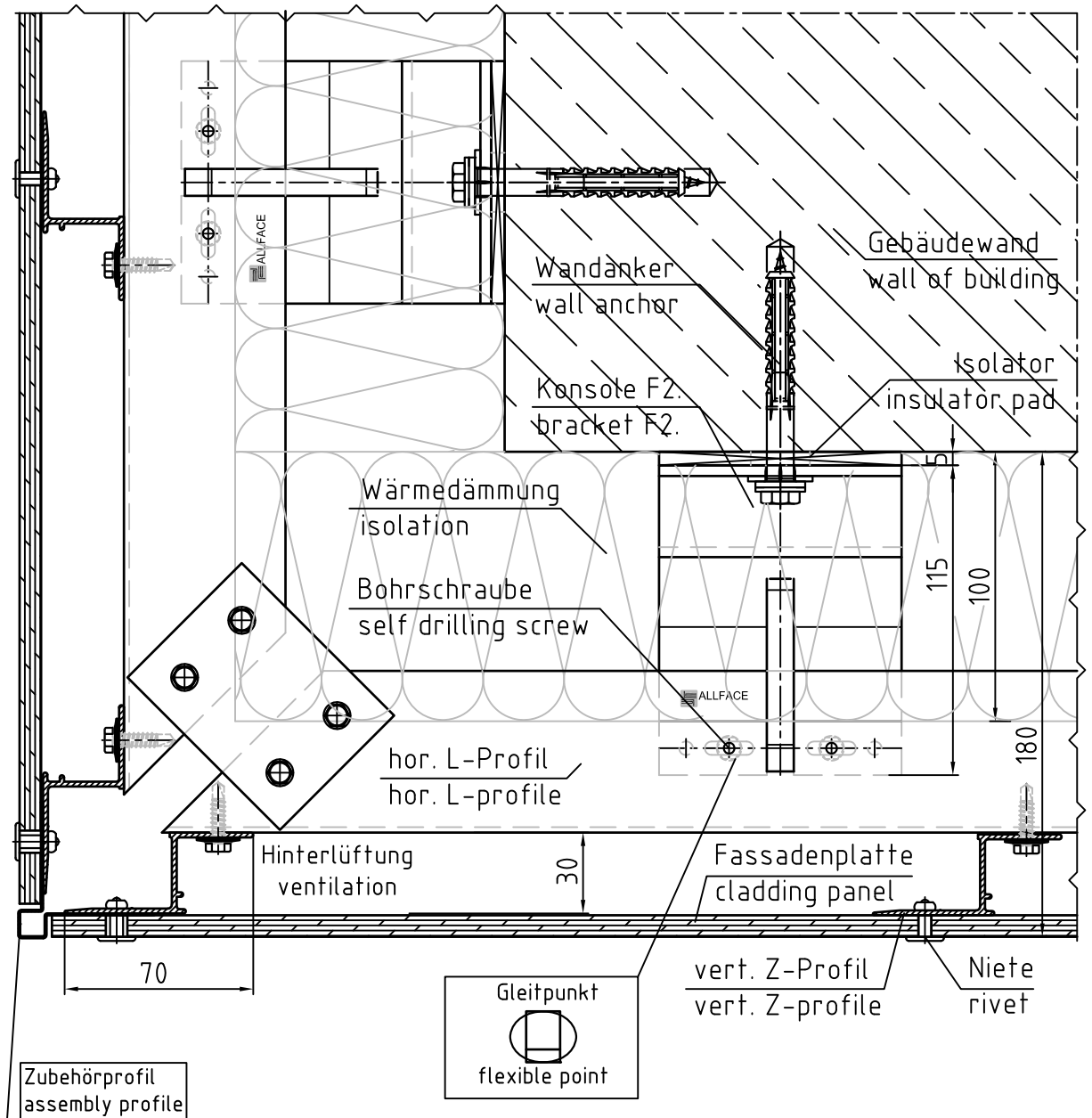
Vertikalschnitt  
vertical section  
System F2.10



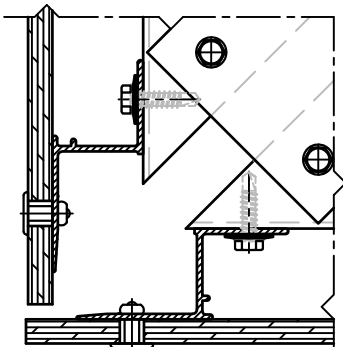
Maßstab/Scale 1:2,5



Horizontalschnitt Aussenecke  
horizontal section external corner  
System F2.10

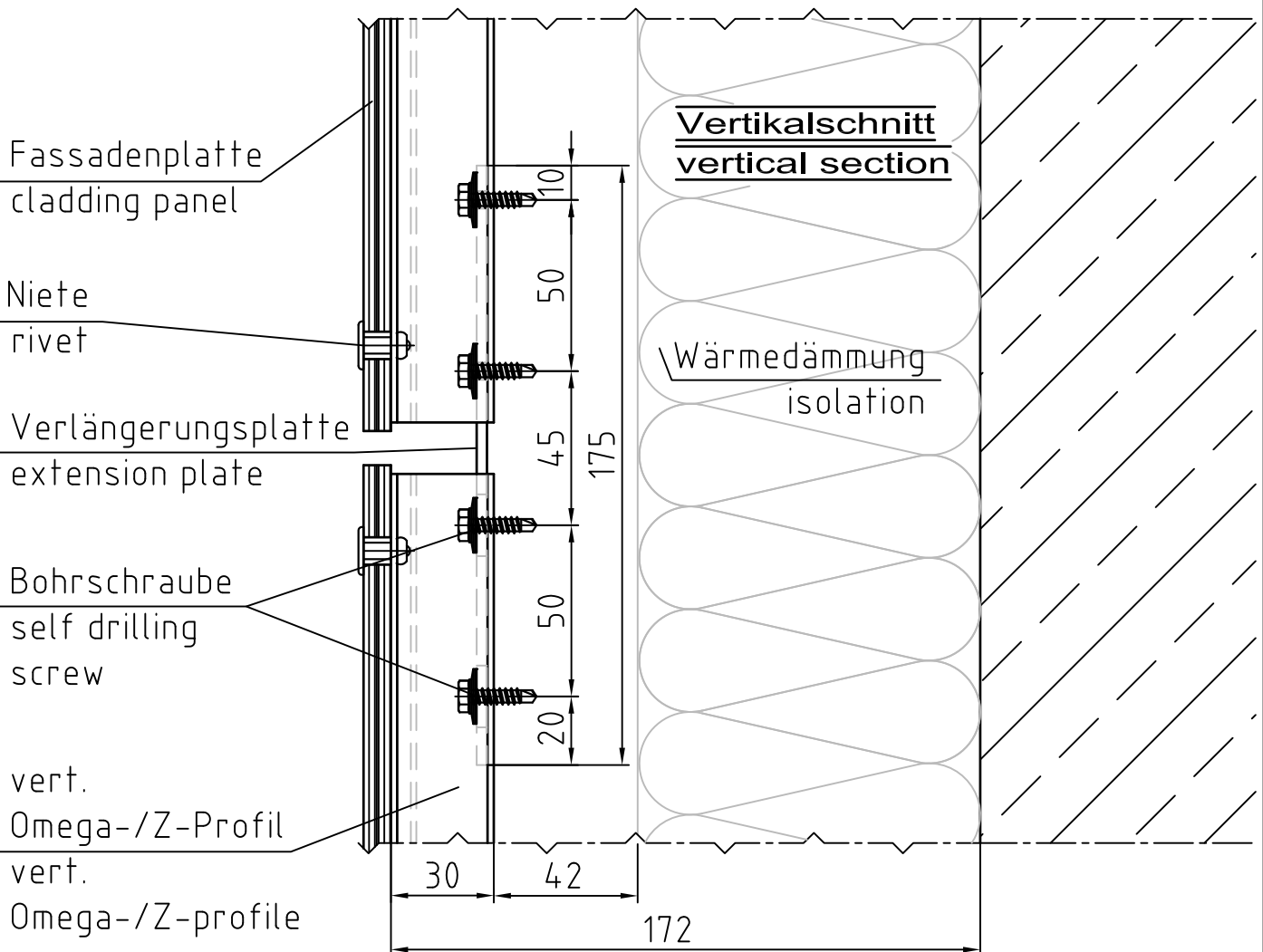
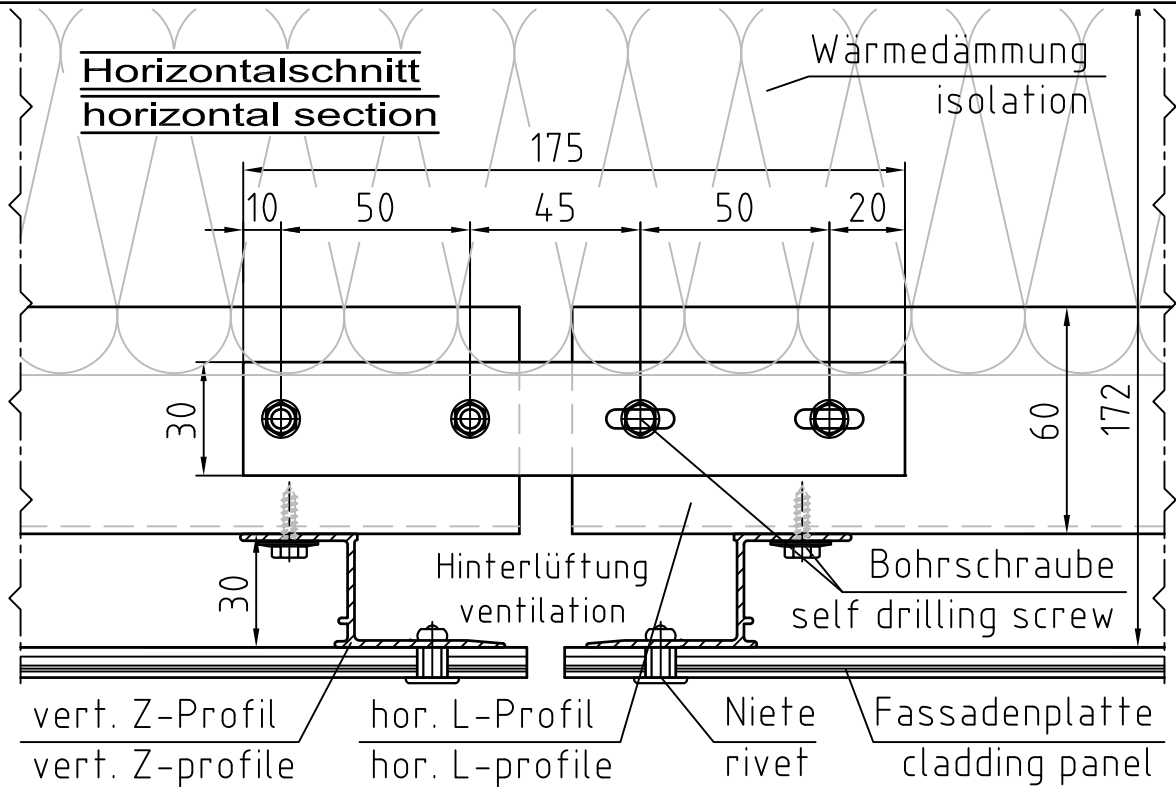


**Variante**



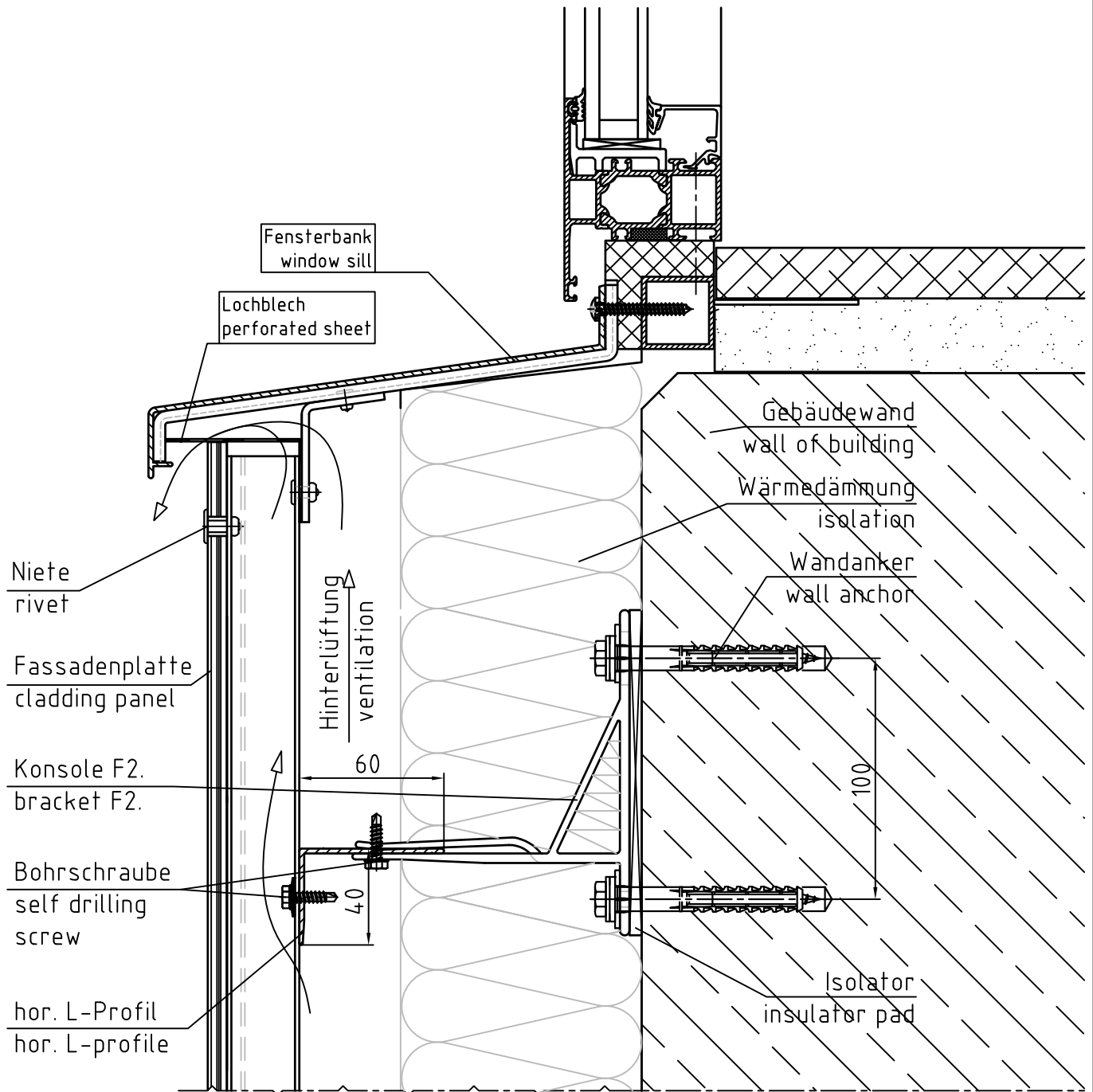
Maßstab/Scale 1:2,5

Schnitt Profilstoß  
 section joint of profile  
 System F2.10



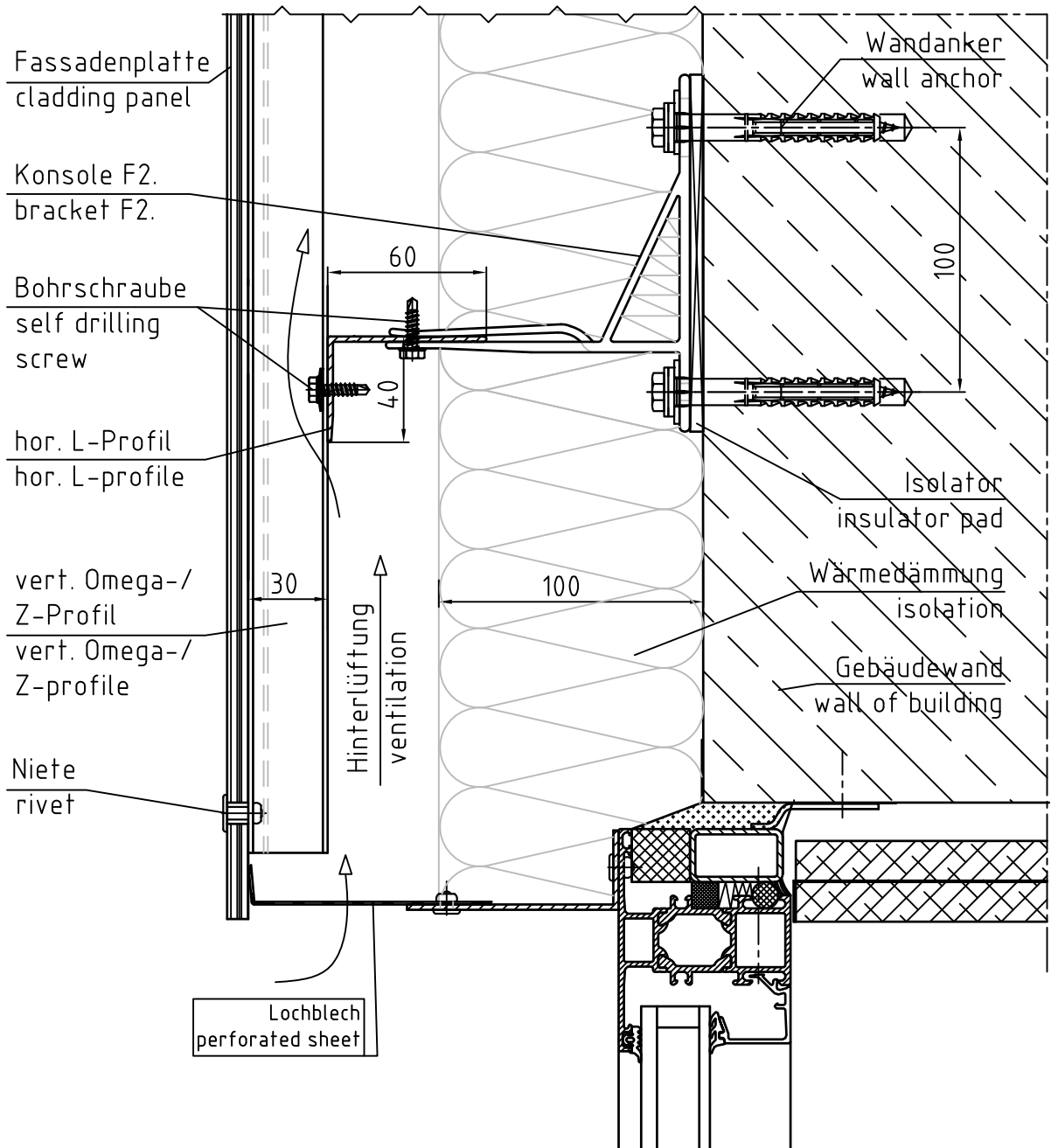
Maßstab/Scale 1:2

Vertikalschnitt Fensterdetail  
vertical section window detail  
System F2.10



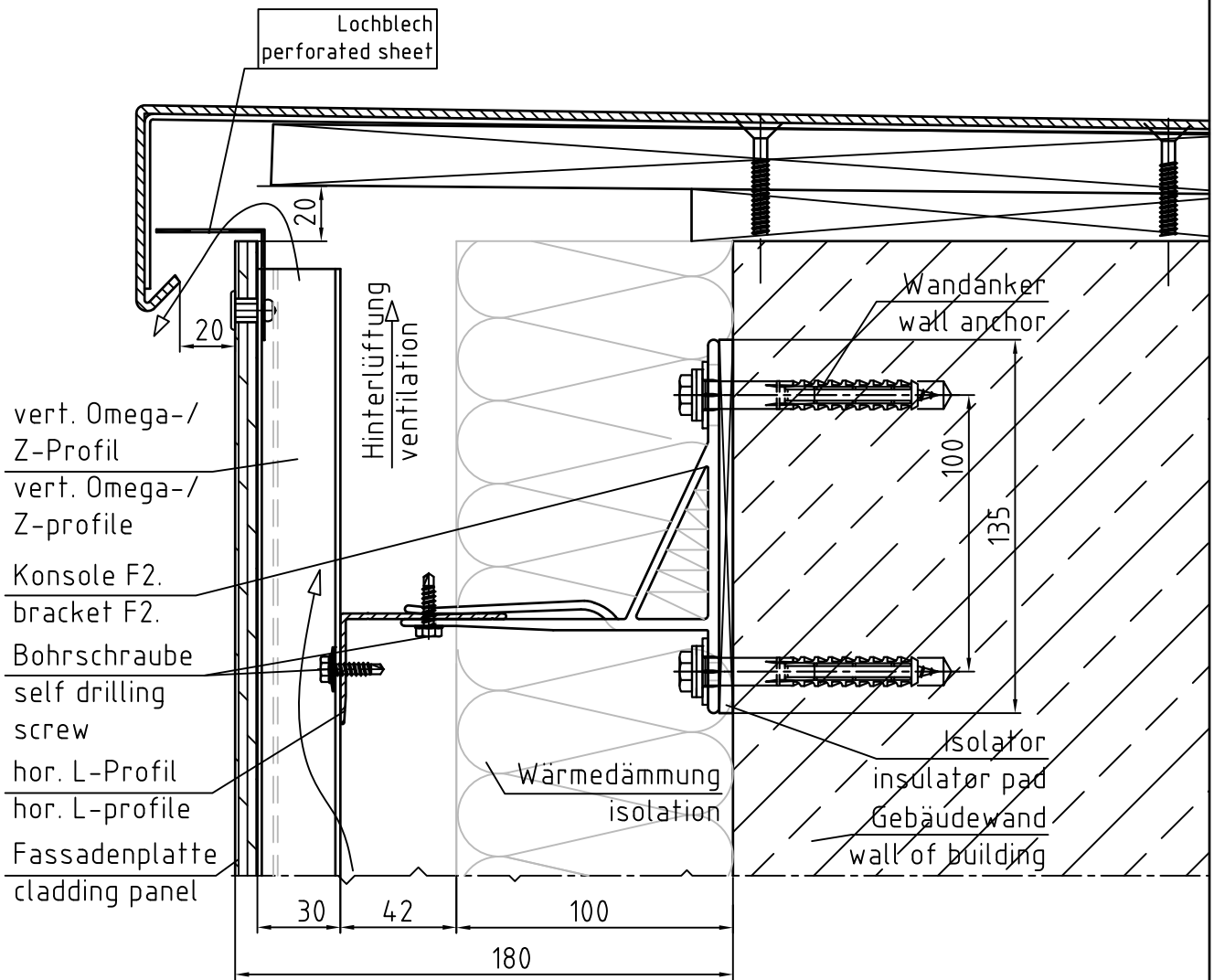
Maßstab/Scale 1:2,5

Vertikalschnitt Fensterdetail  
vertical section window detail  
System F2.10



Maßstab/Scale 1:2,5

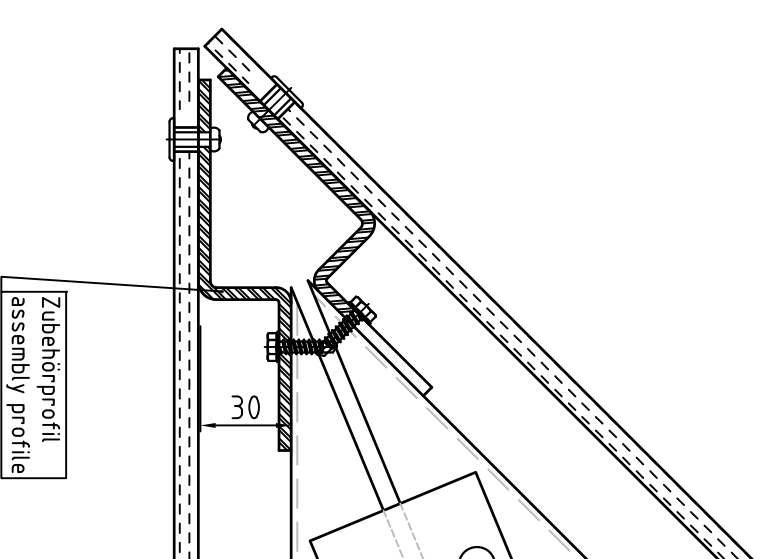
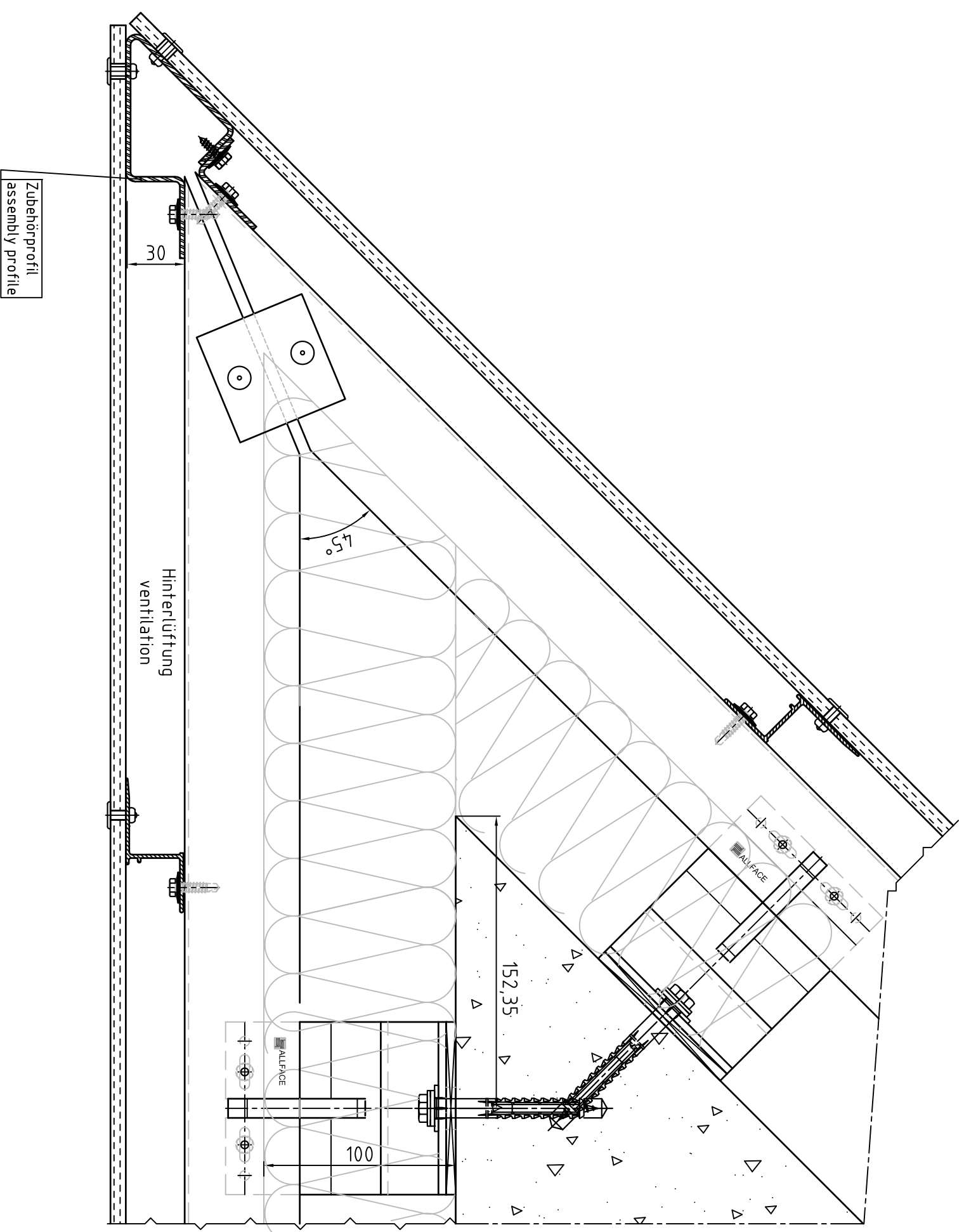
Vertikalschnitt Attikadetail  
vertical section parapet detail  
System F2.10



Maßstab/Scale 1:2,5



## System F2.10



Maßstab/Scale 1:2,5