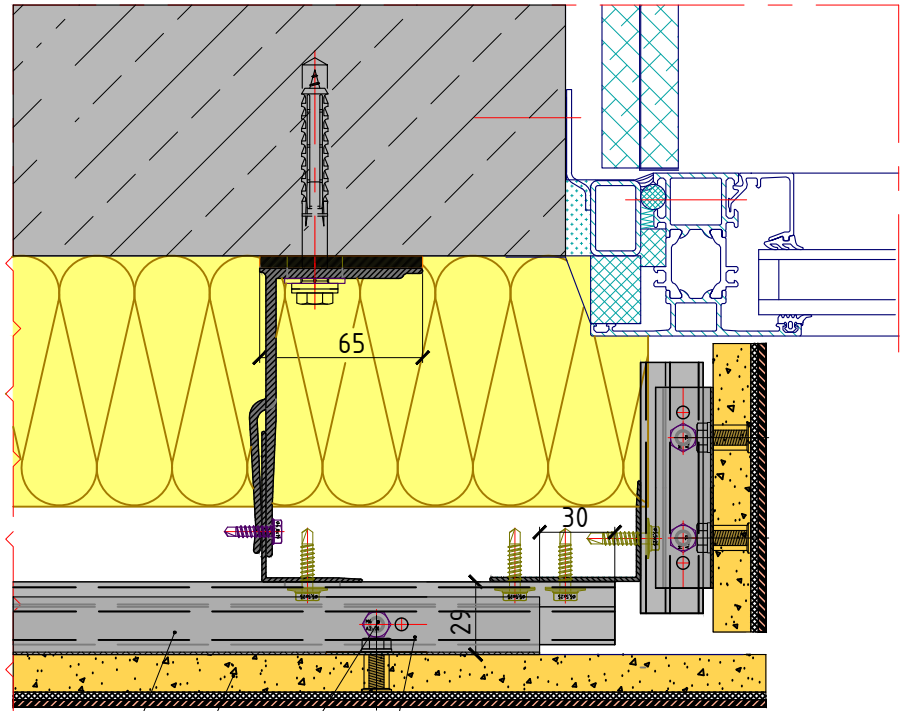


24 8 23 22 37 30



24 8 23 22

**Notes:**

- Drawing for reference purposes, do not use for final project drawings.
- Dynamic Cladding cannot be held liable for design and detailing of a project.
- Where necessary the detail should be customised by a qualified construction professional after examining the project specific requirements for local construction regulations, local conditions and appropriate design for the proposed system.
- For project, specific support contact Dynamic Cladding Technical Department.



REF	NOTE	DATE	PROJECT	DRAWING I.D.	SPS façades
			<b>Dynamic Cladding Stone System</b>	PHASE	ISSUE
			DESCRIPTION <b>SPS Façades Standard Details</b>	SYSTEM ID. No.	
			DETAIL <b>Horizontal Section Window Detail</b>	SCALE <b>NTS</b>	DATE <b>June 2018</b>
				DRAWN <b>AutoCAD LT 2017</b>	Telephone: +44 (0) 845 519 8641 Email: info@spsfacades.co.uk